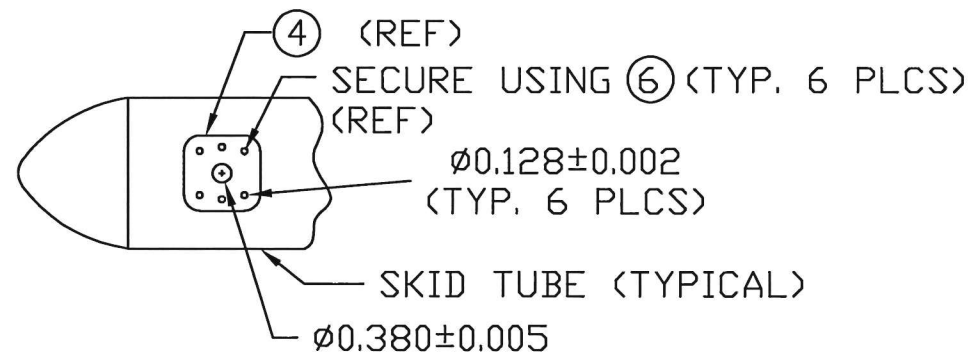
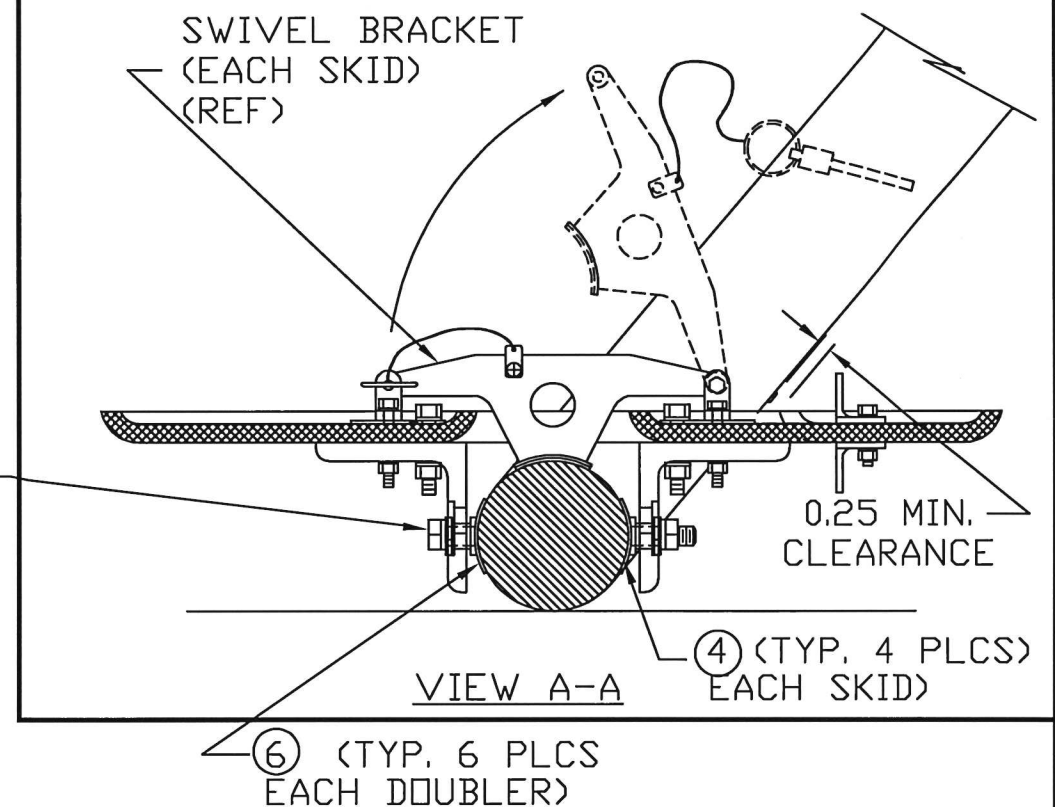
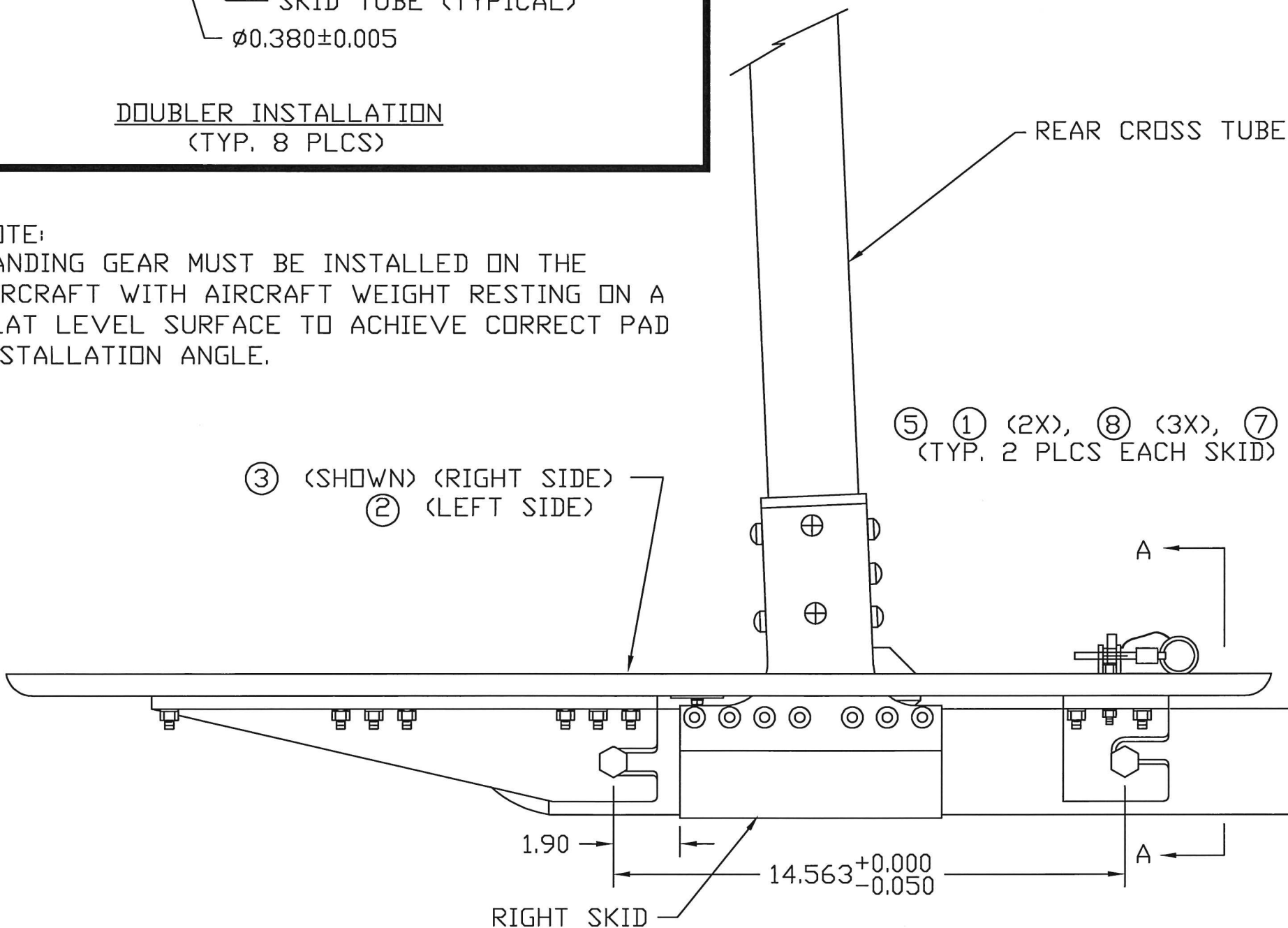


ECO	SHEET	REV	ECO	DATE	DESCRIPTION	BY	CHK	APR
	1	A		01/22/98	ITEM 7 WAS (2X)	REB	REB	REB
	1	B		01/19/01	UPDATED VIEWS & FORMAT	MR	LS	MR
			1	10/09/07	DIM 14.563 WAS 14.625	REB	LS	REB
			2	03/20/15	ADDED NOTE	JT	LS	JT
			3	03/02/21	UPDATED ITEM #6 P/N, OLD PART NOW ALT.	DT	LS	ZA



DOUBLER INSTALLATION  
(TYP. 8 PLCS)

NOTE:  
LANDING GEAR MUST BE INSTALLED ON THE AIRCRAFT WITH AIRCRAFT WEIGHT RESTING ON A FLAT LEVEL SURFACE TO ACHIEVE CORRECT PAD INSTALLATION ANGLE.



TYPICAL INSTALLATION  
HIGH SKID GEAR INSTALLATION ONLY  
REFERENCE P/N 407-706-007-101 OR EQUIVALENT

BREAK ALL SHARP EDGES

—CONFIDENTIAL INFORMATION—  
THE INFORMATION AND DATA CONTAINED HEREIN IS PROPRIETARY AND IS SUBMITTED IN CONFIDENCE; AND SHALL NOT BE DISCLOSED, USED OR DUPLICATED FOR ANY PURPOSE WHATSOEVER WITHOUT THE PRIOR WRITTEN PERMISSION OF PARAVION TECHNOLOGY, INC.

PROTO  
N/C

Paravion® Technology Inc.		TITLE SNOWPAD INSTALLATION			DRAWING NO. 407SP-100	
DIMENSIONS IN INCHES						
TOLERANCES EXCEPT WHERE NOTED:						
.X = ± .1		.XX = ± .05		.XXX = ± .010		ANGLES = ± 1°
DRAWN BY RHSM		APRVD. BY REB		CHK'D BY LS		DATE 11/13/97
						REV B
						ECO 3
DO NOT SCALE DRAWING					SHEET 1 OF 1	
© 2021 PARAVION TECH., INC. PARAVION IS A TRADEMARK OF PARAVION TECHNOLOGY, INC.						

# Bill of Materials

\*407SP-100-1, REV. B, ECO 3

ITEM #	P/N	DESCRIPTION	QTY	TYP
0	*407SP-100-1, REV. B, ECO 3	SNOW PAD INST'N	1	KIT
1	206SP-2500-1	BUSHING	8	EA.
2	407SP-1000-1	PAD ASSEMBLY	1	EA.
3	407SP-1000-2	PAD ASSEMBLY	1	EA.
4	407SP-2510-1	DOUBLER	8	EA.
5	AN6-46A	BOLT	4	EA.
6	CR3523-4-04	RIVET (ALT: CR3523-4-4)	48	EA.
7	MS21042L6	NUT	4	EA.
8	NAS1149F0663P	WASHER	16	EA.

---