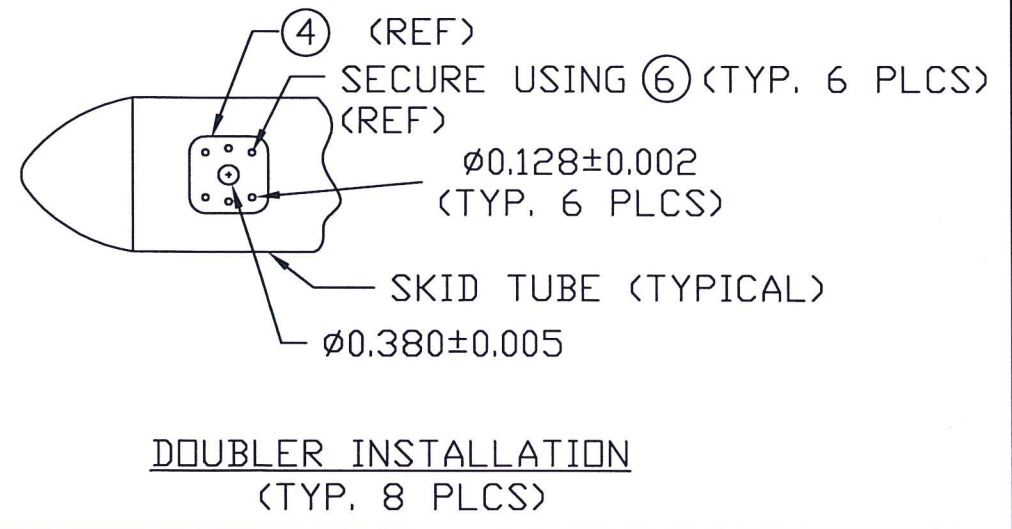
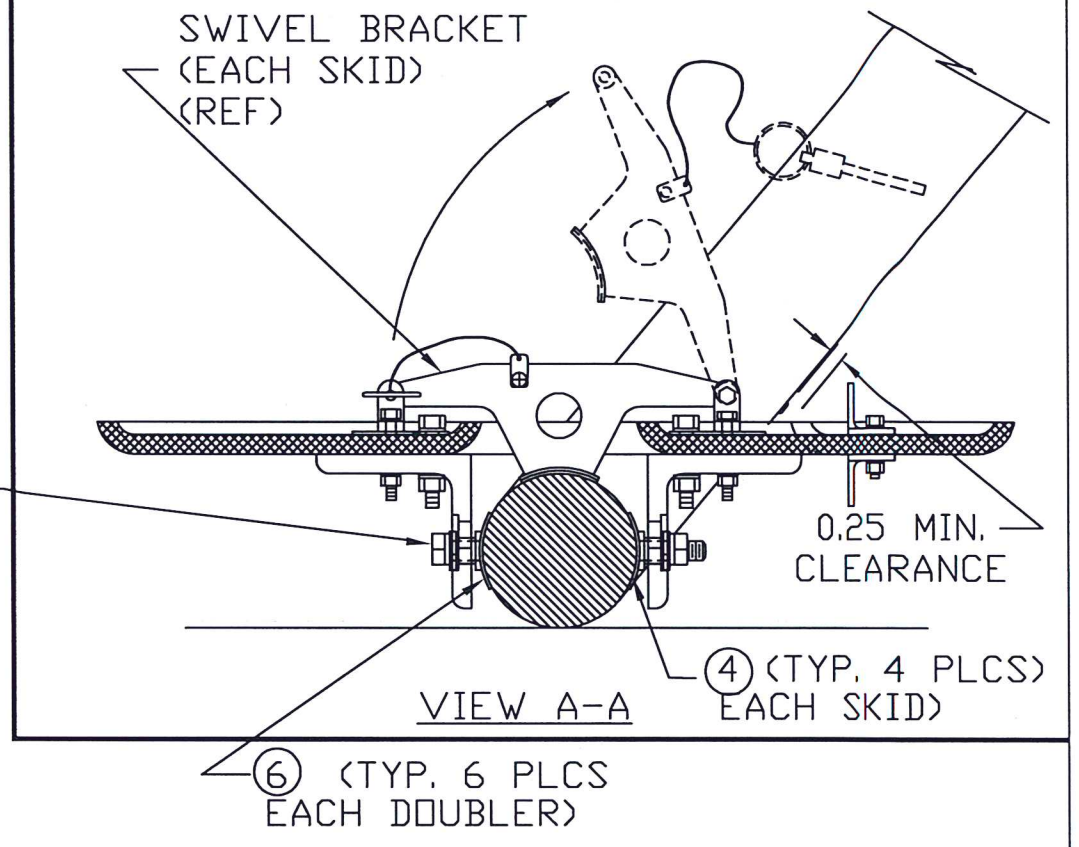
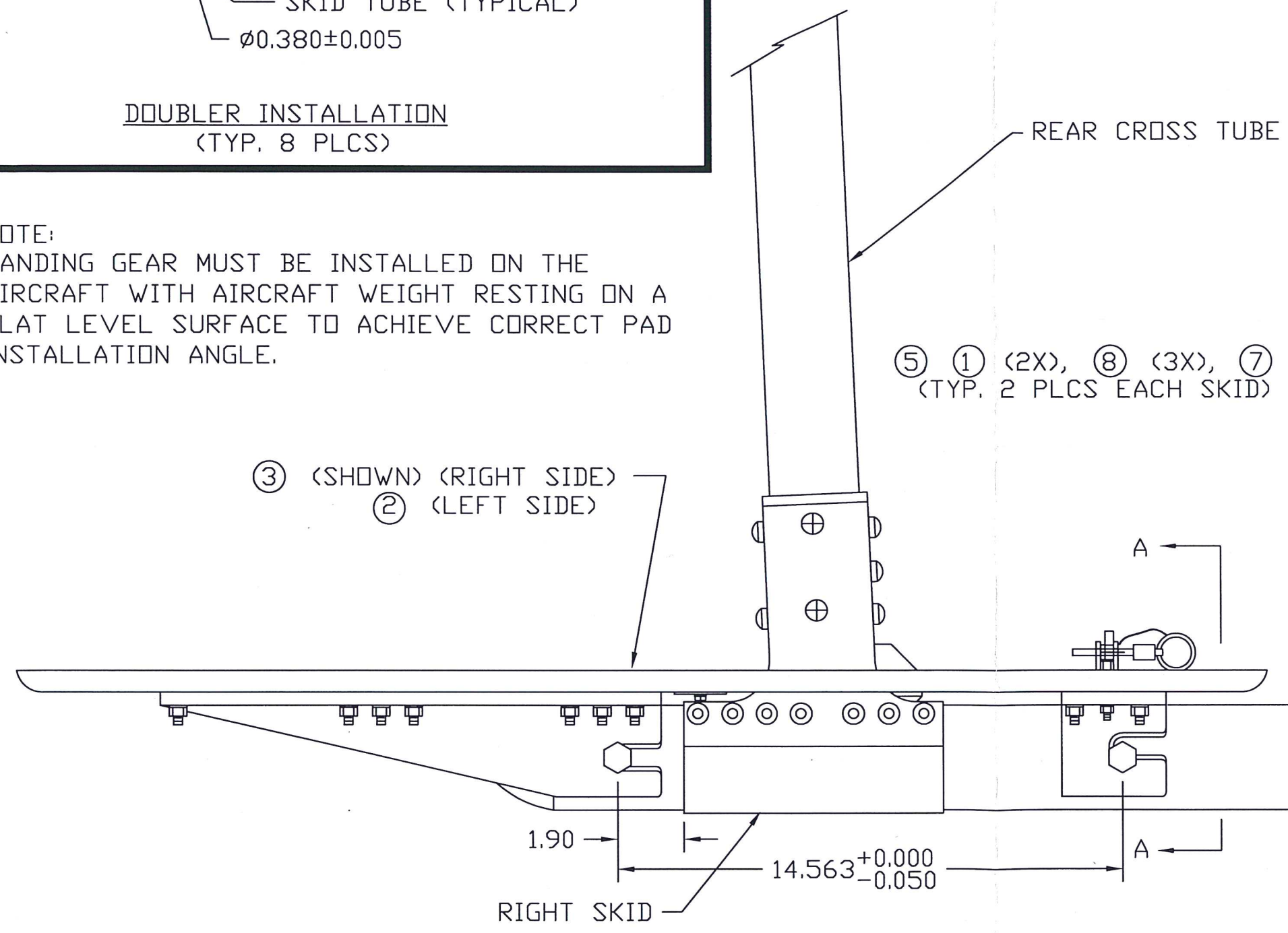


ECO	SHEET	REV	ECO	DATE	DESCRIPTION	APR	CHK
	1	A		01/22/98	ITEM 7 WAS (2X)	REB	REB
	1	B		01/19/01	UPDATED VIEWS & FORMAT	MR	LS
			1	10/09/07	DIM 14.563 WAS 14.625	REB	LS
			2	03/20/15	ADDED NOTE	<i>AK</i>	<i>LS</i>



**DOUBLER INSTALLATION**  
(TYP. 8 PLCS)

NOTE:  
LANDING GEAR MUST BE INSTALLED ON THE AIRCRAFT WITH AIRCRAFT WEIGHT RESTING ON A FLAT LEVEL SURFACE TO ACHIEVE CORRECT PAD INSTALLATION ANGLE.



**TYPICAL INSTALLATION**

HIGH SKID GEAR INSTALLATION ONLY  
REFERENCE P/N 407-706-007-101 OR EQUIVALENT

BREAK ALL SHARP EDGES

**-CONFIDENTIAL INFORMATION-**  
THE INFORMATION AND DATA CONTAINED HEREIN IS PROPRIETARY AND IS SUBMITTED IN CONFIDENCE; AND SHALL NOT BE DISCLOSED, USED OR DUPLICATED FOR ANY PURPOSE WHATSOEVER WITHOUT THE PRIOR WRITTEN PERMISSION OF PARAVION TECHNOLOGY, INC.

PROTO  
N/C

Paravion® Technology Inc.		TITLE SNOWPAD INSTALLATION		DRAWING NO. 407SP-100	
DIMENSIONS IN INCHES					
TOLERANCES EXCEPT WHERE NOTED:					
.X	= ± .1				
.XX	= ± .05				
.XXX	= ± .010				
ANGLES = ± 1°					
DRAWN BY RHSM		APRVD. BY REB	CHK'D BY LS	DATE 11/13/97	REV B
DO NOT SCALE DRAWING					ECO 2
© 2001 PARAVION TECH., INC. PARAVION IS A TRADEMARK OF PARAVION TECHNOLOGY, INC.					SHEET 1 OF 1

# Bill of Materials

\*407SP-100-1, REV. B, ECO 2

ITEM #	P/N	DESCRIPTION	QTY	TYP
0	*407SP-100-1, REV. B, ECO 2	SNOW PAD INST'N	1	KIT
1	206SP-2500-1	BUSHING	8	EA.
2	407SP-1000-1	PAD ASSEMBLY	1	EA.
3	407SP-1000-2	PAD ASSEMBLY	1	EA.
4	407SP-2510-1	DOUBLER	8	EA.
5	AN6-46A	BOLT	4	EA.
6	CR3523-4-4	RIVET	48	EA.
7	MS21042L6	NUT	4	EA.
8	NAS1149F0663P	WASHER	16	EA.

---