

NOTES:

1. -1 & -2 INSTALLATIONS ARE USED ONLY WITH THE ALUMINUM COWLING ON BELL MODELS 407, 206L-1, L-3 AND L-4.
 -3 & -4 INSTALLATIONS ARE USED ONLY WITH THE CARBON FIBER COMPOSITE COWLING (407-064-004-XXX) ON BELL MODELS 407, 206L-1, L-3 AND L-4.

2. ALT. (17), (18), (19) & (25) MAY BE INSTALLED IF NEEDED TO ADJUST FOR COWLING VARIATION.

3. DOUBLER MAY BE MODIFIED AS NECESSARY TO ACCOMMODATE COWLING INTERNAL STRUCTURE, WHILE MAINTAINING A MINIMUM 2D EDGE DISTANCE ON ALL RIVET HOLES.

4. MAGNOLIA 6398 MAY BE USED AS FAIRING COMPOUND.
 MAGNOLIA PLASTICS, INC.
 5547 PEACHTREE INDUSTRIAL BLVD.
 CHAMBLEE, GA 30341-2296
 800-831-8031

5. USE HYSOL EA9309NA ADHESIVE FOR DOUBLER ASSEMBLY AND RECEPTACLE INSTALLATIONS PER BELL HELICOPTER TEXTRON STANDARD PRACTICES MANUAL BHT-ALL-SPM CHAPTER 7.

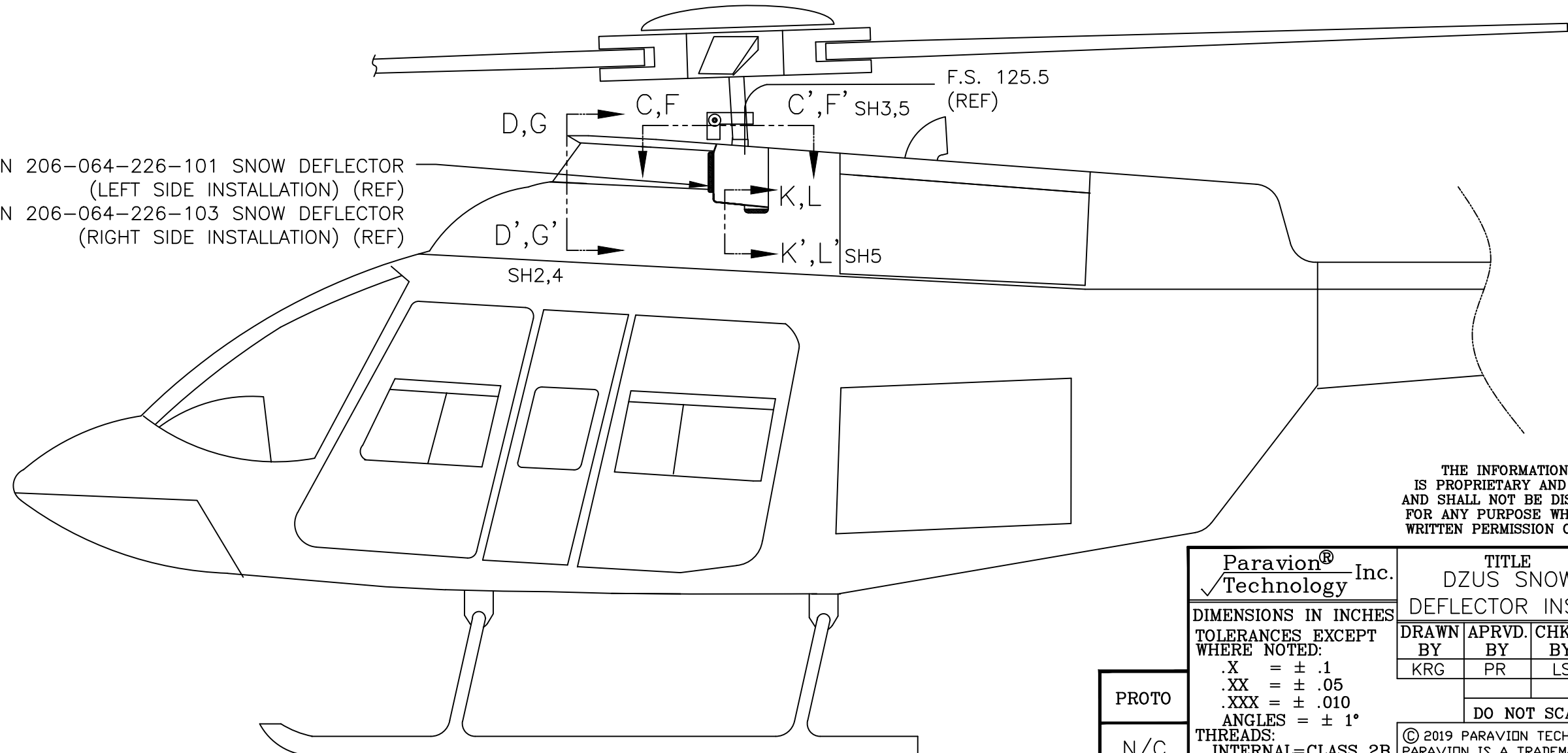
6. ALL RIVETS TO BE INSTALLED PER BELL HELICOPTER STRUCTURAL REPAIR MANUAL BHT-ALL-SRM.

7. REMOVE EXISTING NUTPLATES PER BHT-ALL-SRM SECTION 3-2-22.

8. CONFORM WITH BHT TB 407-14-106 COWLING MODIFICATION, IF REQUIRED.

SHEET	REV	ECO	DATE	DESCRIPTION	BY	APR	CHK
1,2	A		10/08/99	CHANGED RIVET & DZUS STUD LENGTHS.	PR	PR	LS
1,2,3	B		11/05/99	ADDED SHEET 3 & ADDED 407SD-2500 DOUBLER ASSY.	PR	PR	LS
1,2,3	C		02/26/01	REPLACE TWO DZUS FASTENERS WITH NEW DZUS PARTS -2 INSTALLATION ONLY, 4 EA. NAS9302B-5-03 + 10 EA. NAS9302B-5-02 WAS 14 EA. NAS9302B-5-02. REMOVED 407SD-2500-2. ADDED 2 EA. ES34160-1,2 EA. ES34170-1, 2 EA. GH3	MR	MR	LS
1,2,3	D		09/23/02	-2 INST'N (4)EA. (16), (2)EA. (12) WAS (6)EA. (12)	REB	REB	LS
1,2		1	03/17/08	ADDED NOTE (16), (17) AND (18) FOR COWL VARIATION	REB	REB	LS
1-3		2	04/16/09	DIVIDED DETAIL A INTO A1/A2/A3. MATCH DRILL NOTE ON DETAIL B WAS ON VIEW D-D'. -1 WAS ON SH3, VIEW D-D' WAS ON SH2. ITEM 15 WAS R3.5(CLASS B).	REB	REB	LS
1-3		3	11/30/09	ADDED VIEW E-E', Ø0.250 REAM NOTE TO COWLING & NOTES 3/4.	REB	REB	LS
1	E		02/12/2013	ADDED 19 AS OPTIONAL FOR COWL VARIATION	DGW	DGW	LS
1-5	F		09/30/2013	ADDED INSTL -3 & -4; ADDED PAGES 4 & 5; CHANGED NOTE 1, ADDED NOTES 5 & 6, MODIFIED DETAIL A3.	JJT	DGW	LS
3-6	G		01/10/2014	CORRECTED VIEW CALLOUTS ON LOWER RIVETS OF -3 & -4 SH 4; CORRECTED LENGTH OF RIVETS IN VIEWS F-F', H-H', J-J', K-K' & L-L'; MOVED SECTION K-K' & L-L' CALLOUTS TO SH 1; MOVED SECTION K-K' & L-L' TO SH 6; ADDED NOTE 8; ADDED NOTE 7 CALLOUT, 4 PLS, ON SH 4; MODIFIED NOTE 7; REMOVED REDUNDANT NOTES TO REAM HOLES ON VIEW H-H' & J-J' ON SH 5; CORRECTED PART #'S IN NOTE 2 TO MATCH BOM; MODIFIED NOTE 1 TO REFLECT APPLICABILITY; CORRECTED DZUS STUD ITEM # FROM 25 TO 32, 2 PLS ON SH 4; ADDED VIEWS M-M' & N-N' ON SH 6; CORRECTED DETAIL A3 PART #'S TO MATCH BOM; CORRECTED DETAIL A2 PART #'S.	JJT	JJT	LS
ALL	H		02/14/2017	SHT 1 CLEANED UP VIEWS, ADDED -XXX TO NOTE 1. SHT 4 -4 ADDED (2X) TO #31 NOTE, CHANGED LOWER MATCH DRILL Ø0.250 NOTE FROM (4X), SHT 5 VIEW F-F ADDED MATCH DRILL COWLING .201 NOTE.	PDM	JT	LS
1		1	10/31/2018	ADDED ALT. P/N'S TO BOM ITEMS 4 AND 5	CJR	ZA	LS
2,3,7,BOM	J		07/03/2019	-2 REPLACED 2X DZUS FASTENER PARTS FROM ES34160-1 TO D4-R35 AND 4X (16) RIVETS TO 4X (14) (13) AS NECESSARY. ADDED SHEET 7 AND -2 OPTIONAL INSTALLATION AND C-C' VIEW. BOM-2: INCREASED QTY. BY TWO ON ITEMS 5,9,10,13,14, AND 15.	DT		

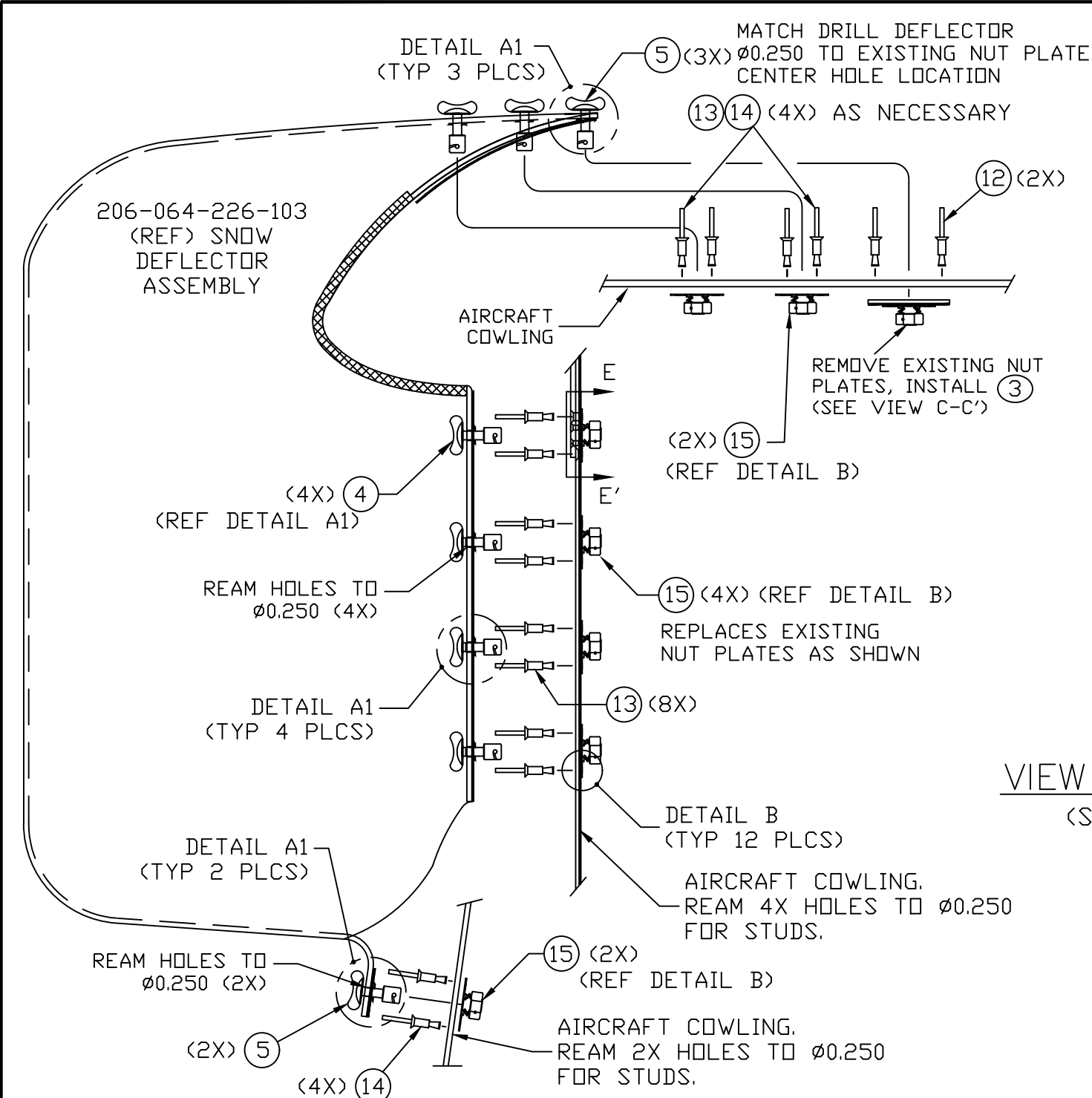
BELL P/N 206-064-226-101 SNOW DEFLECTOR (LEFT SIDE INSTALLATION) (REF)
 BELL P/N 206-064-226-103 SNOW DEFLECTOR (RIGHT SIDE INSTALLATION) (REF)



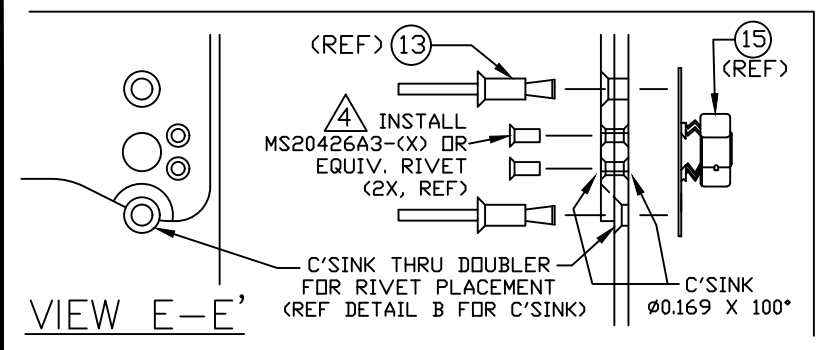
-CONFIDENTIAL INFORMATION-
 THE INFORMATION AND DATA CONTAINED HEREIN IS PROPRIETARY AND IS SUBMITTED IN CONFIDENCE; AND SHALL NOT BE DISCLOSED, USED OR DUPLICATED FOR ANY PURPOSE WHATSOEVER WITHOUT THE PRIOR WRITTEN PERMISSION OF PARAVION TECHNOLOGY, INC.

PROTO
 N/C

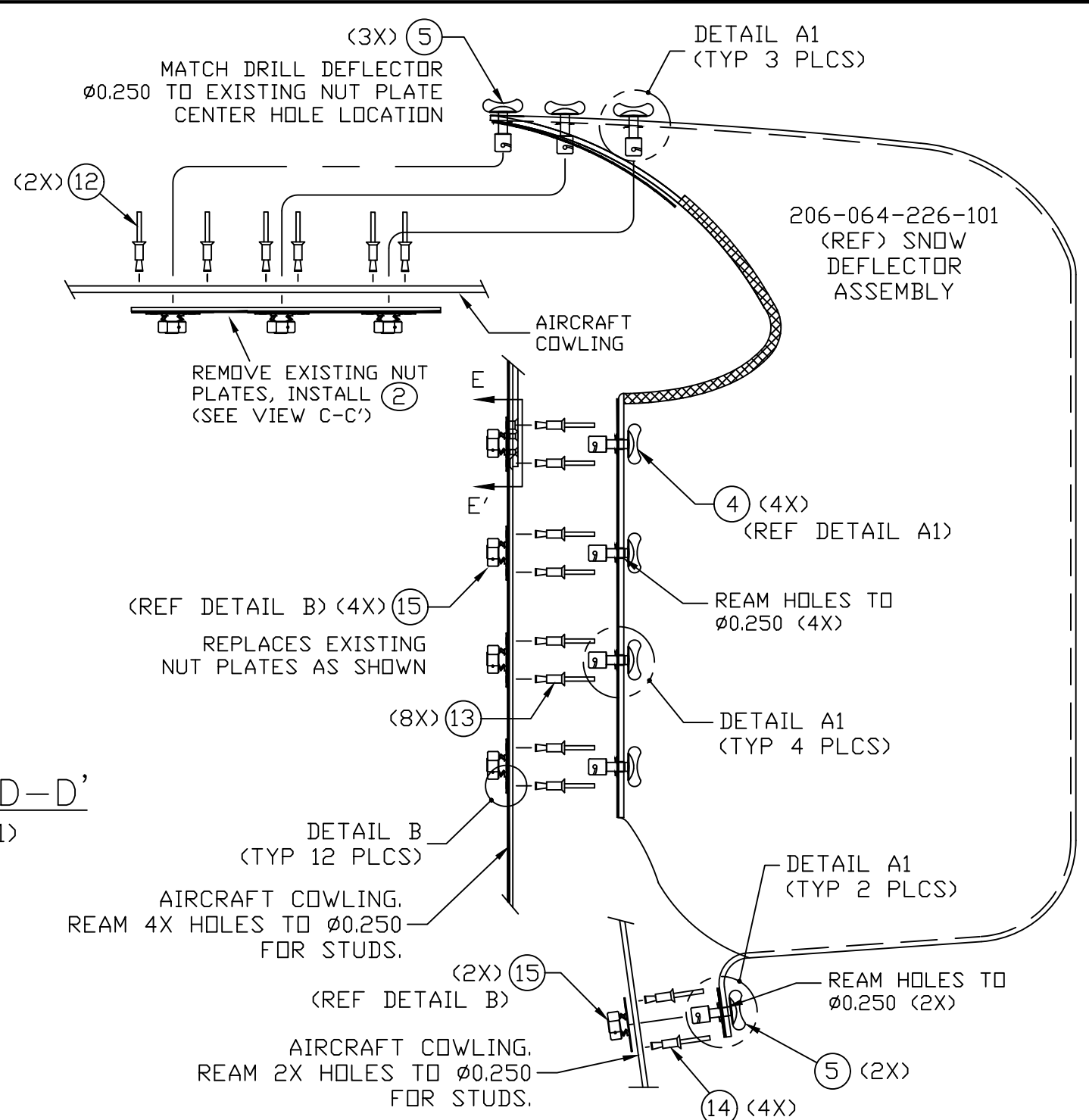
		TITLE DZUS SNOW DEFLECTOR INST'N		DRAWING NO. 407SD-200	
DIMENSIONS IN INCHES TOLERANCES EXCEPT WHERE NOTED: .X = ± .1 .XX = ± .05 .XXX = ± .010 ANGLES = ± 1°					
DRAWN BY KRG	APRVD BY PR	CHK'D BY LS	DATE 09/21/99	REV J	ECO
DO NOT SCALE DRAWING				SHEET 1 OF 7	
© 2019 PARAVION TECH., INC. PARAVION IS A TRADEMARK OF PARAVION TECHNOLOGY, INC.					



-2 SNOW DEFLECTOR INST'N
(RIGHT SIDE)
SEE SH.7 FOR OPTIONAL
INSTALLATION



VIEW E-E'

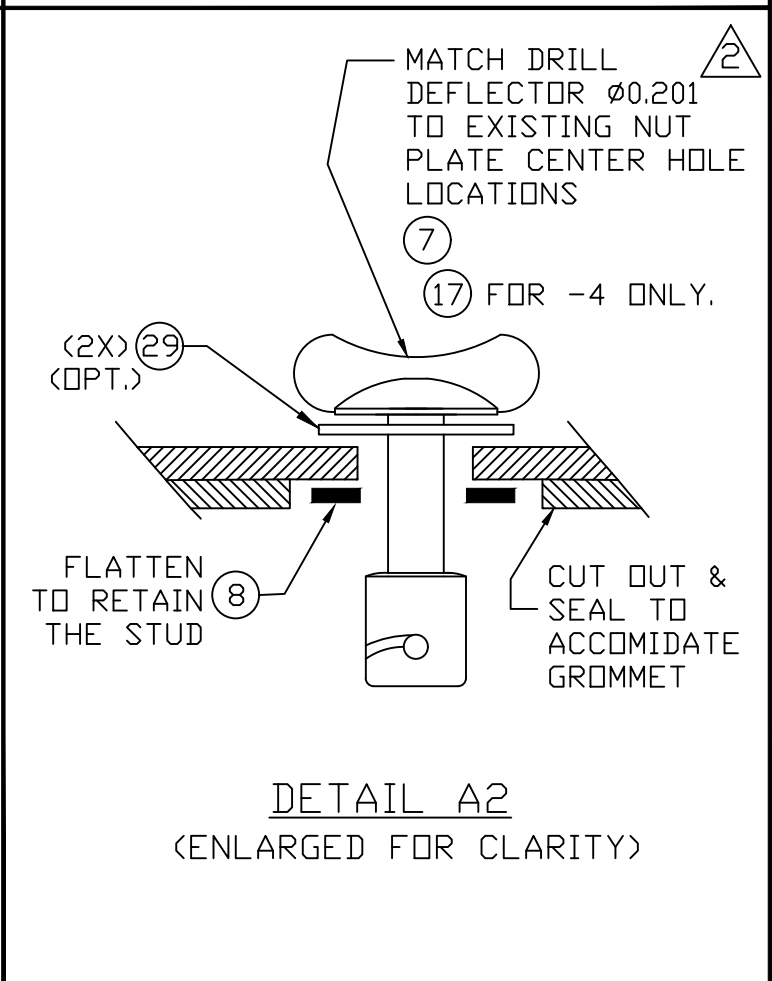
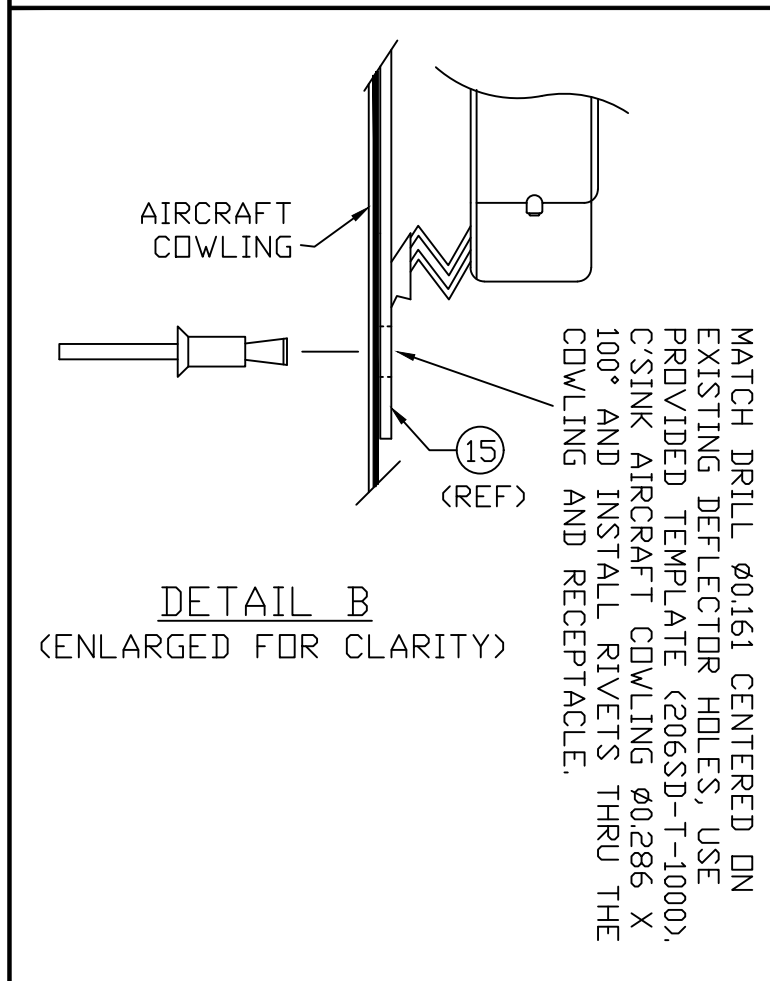
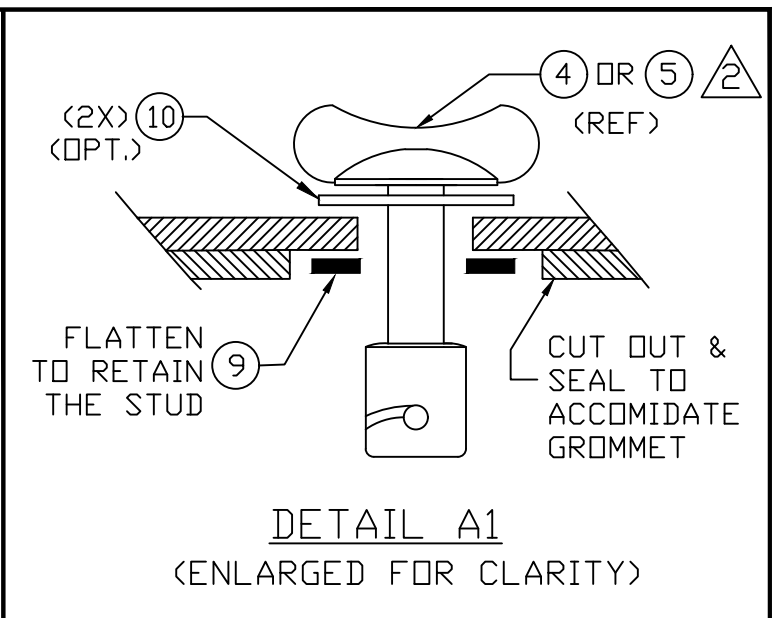
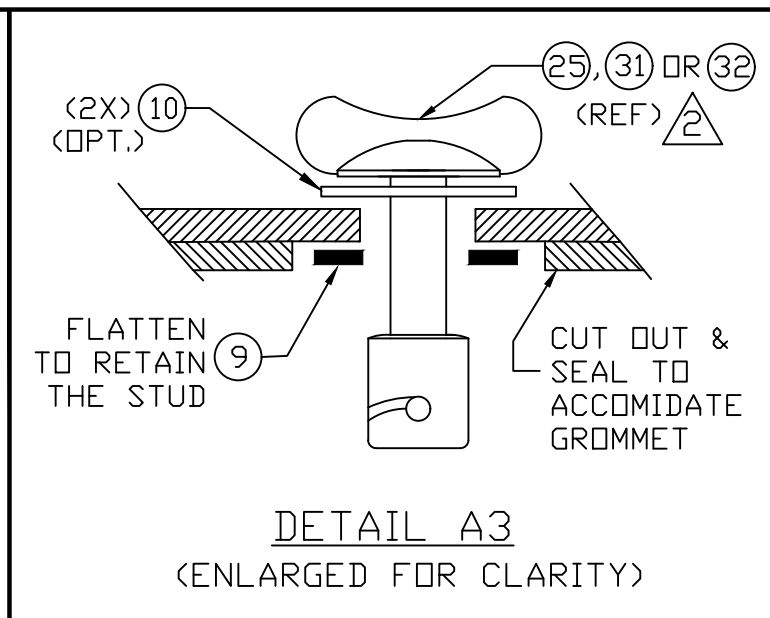
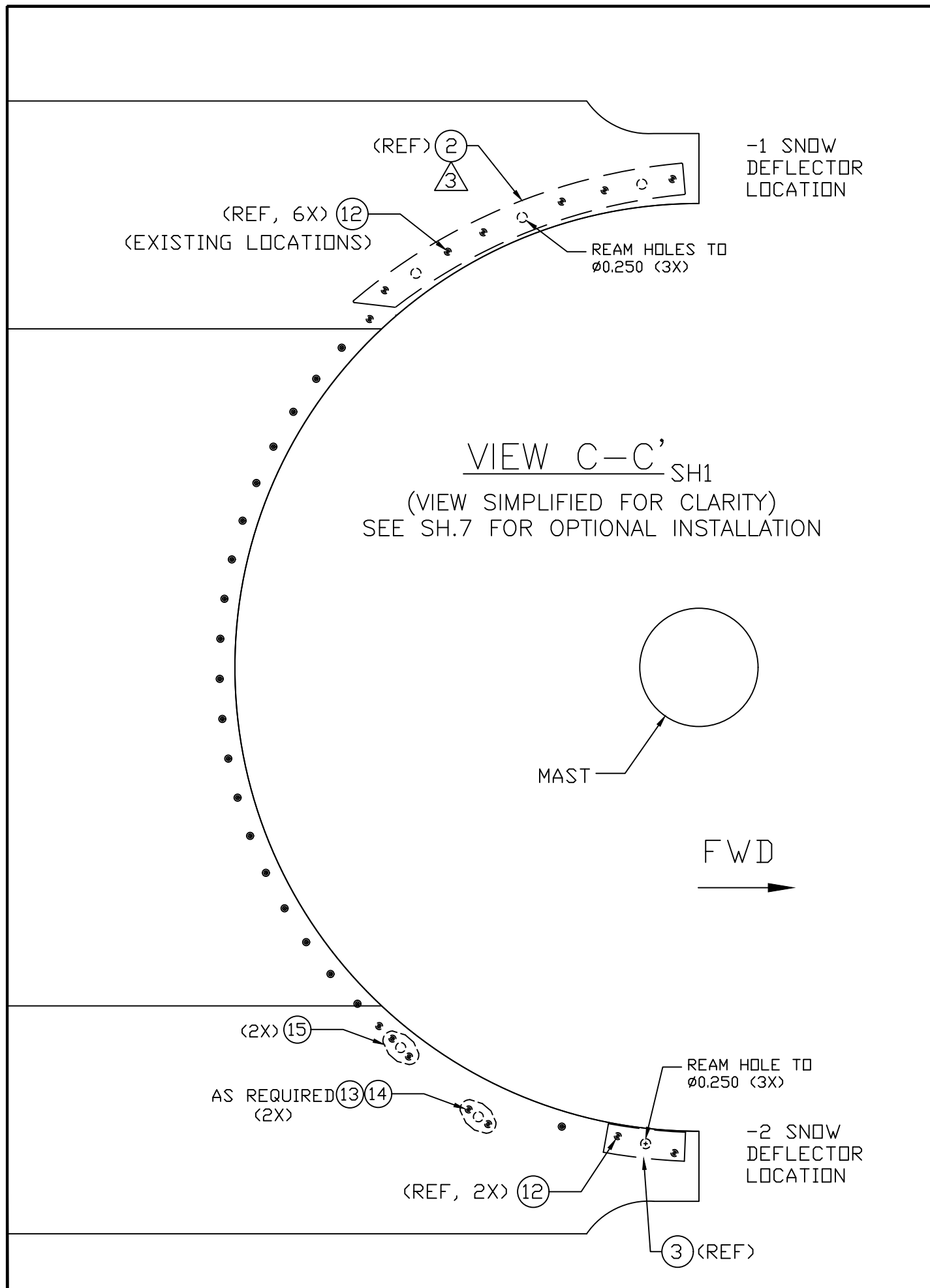


-1 SNOW DEFLECTOR INST'N
(LEFT SIDE)

VIEW D-D'
(SH1)

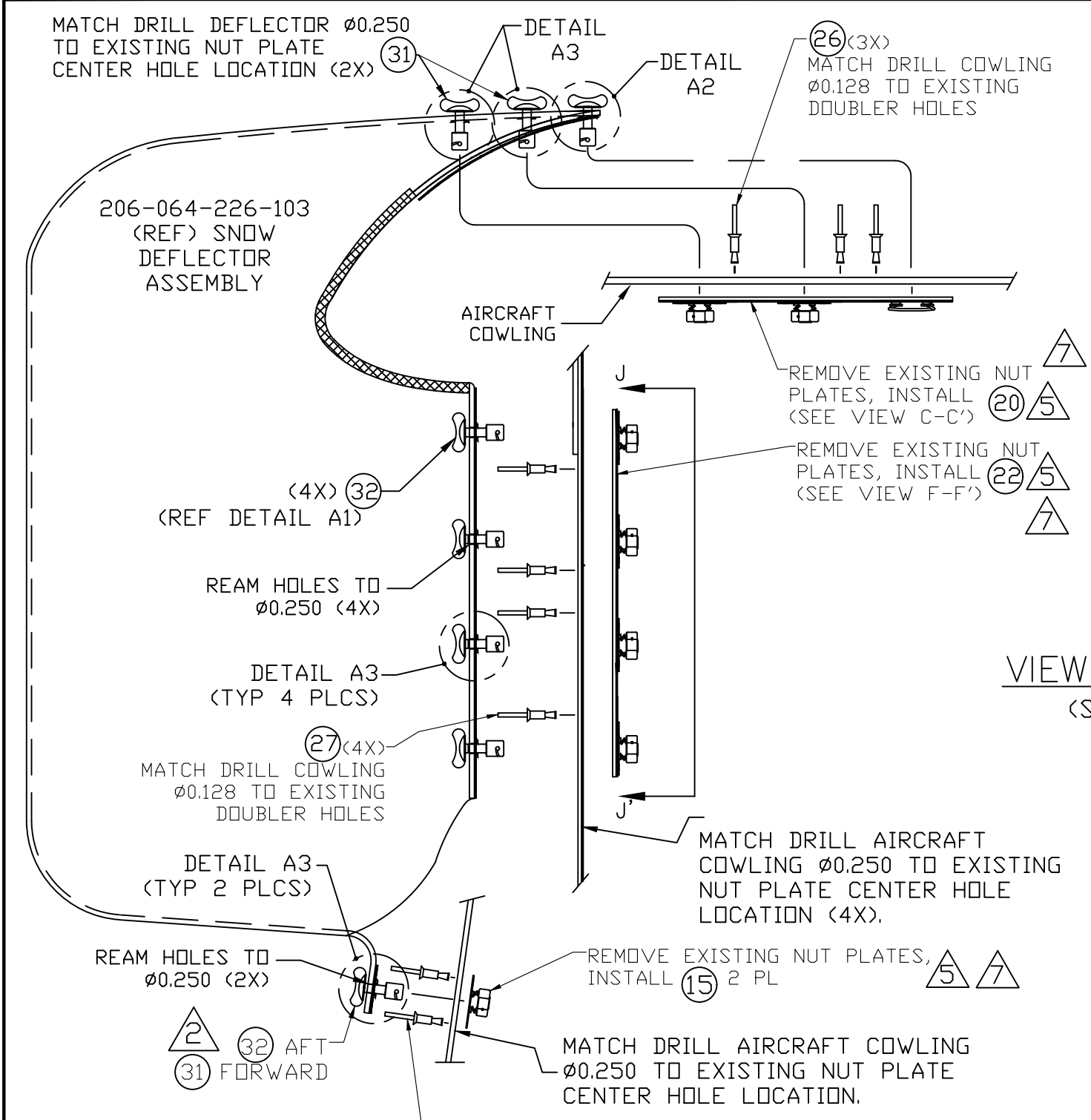
PROTO
N/C

Paravion® Technology Inc.		TITLE DZUS SNOW DEFLECTOR INST'N			DRAWING NO. 407SD-200	
DIMENSIONS IN INCHES TOLERANCES EXCEPT WHERE NOTED: .X = ± .1 .XX = ± .05 .XXX = ± .010 ANGLES = ± 1° THREADS: INTERNAL=CLASS 2B EXTERNAL=CLASS 2A		DRAWN BY KRG	APRVD. BY PR	CHK'D BY LS	DATE 09/21/99	REV J
DO NOT SCALE DRAWING					SHEET 2 OF 7	
© 2019 PARAVION TECH., INC. PARAVION IS A TRADEMARK OF PARAVION TECHNOLOGY, INC.						



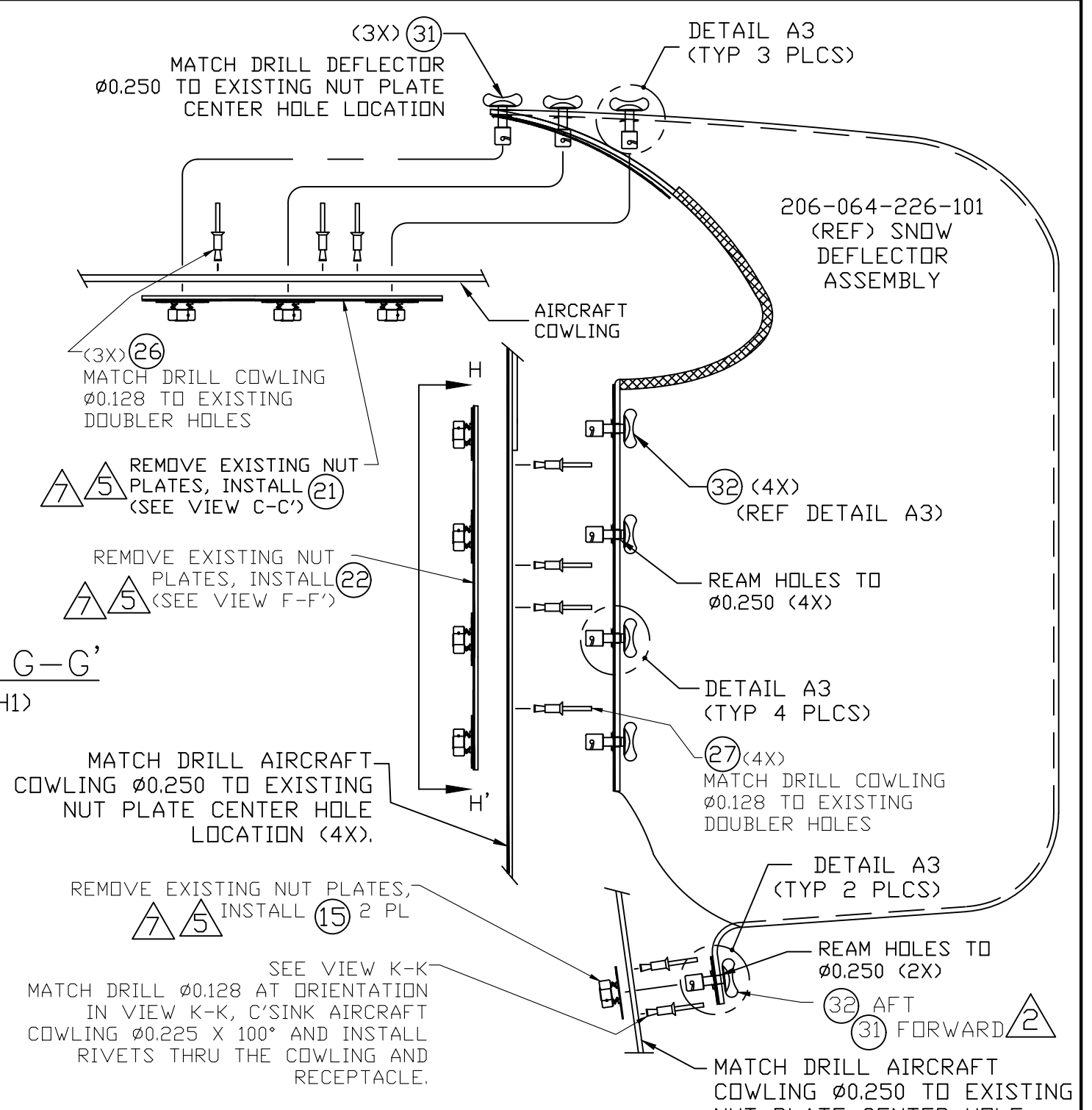
Paravion® Inc. Technology		TITLE		DRAWING NO.	
		DZUS SNOW DEFLECTOR INST'N		407SD-200	
DIMENSIONS IN INCHES		DRAWN BY	APRVD. BY	CHK'D BY	DATE
TOLERANCES EXCEPT WHERE NOTED:		KRG	PR	LS	11/05/99
.X = ± .1		DO NOT SCALE DRAWING			REV
.XX = ± .05					J
.XXX = ± .010		© 2019 PARAVION TECH., INC. PARAVION IS A TRADEMARK OF PARAVION TECHNOLOGY, INC.			ECO
ANGLES = ± 1°					
THREADS:		SHEET			
INTERNAL=CLASS 2B					3
EXTERNAL=CLASS 2A		7			

PROTO
N/C



-4 SNOW DEFLECTOR INST'N
(RIGHT SIDE)

SEE VIEW L-L
MATCH DRILL Ø0.128 AT ORIENTATION
IN VIEW L-L, C'SINK AIRCRAFT
COWLING Ø0.225 X 100° AND INSTALL
RIVETS THRU THE COWLING AND
RECEPTACLE.

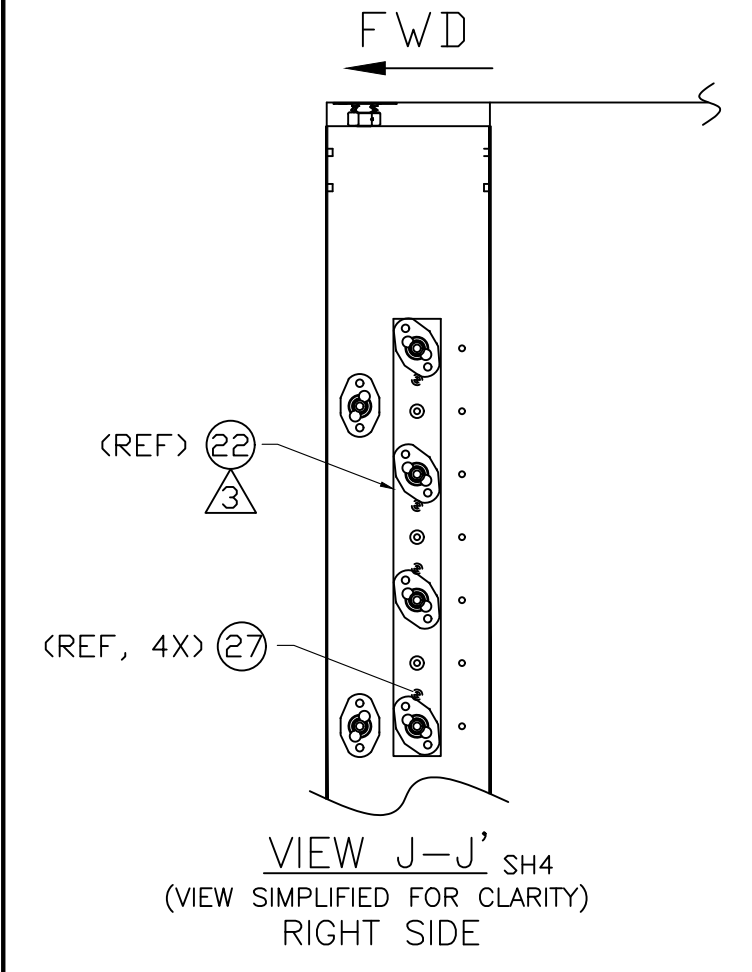
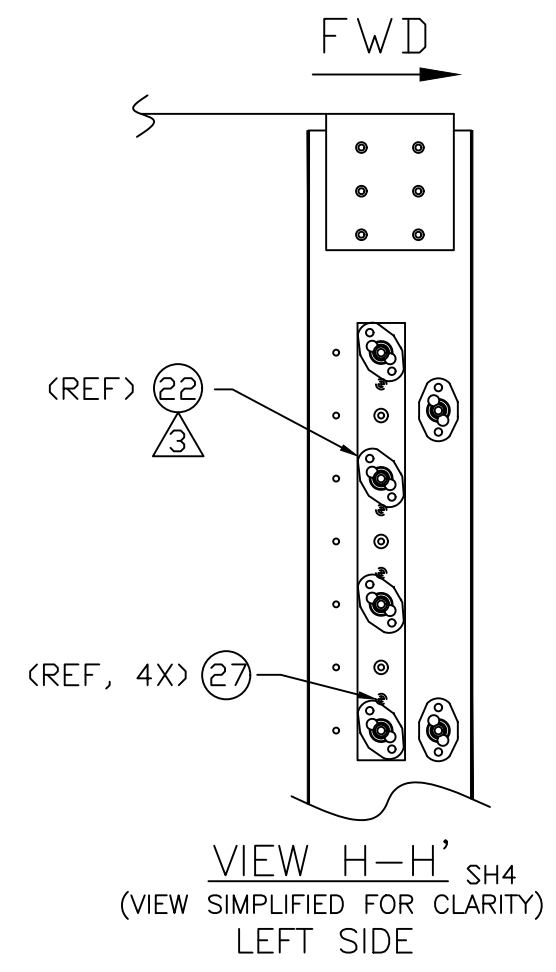
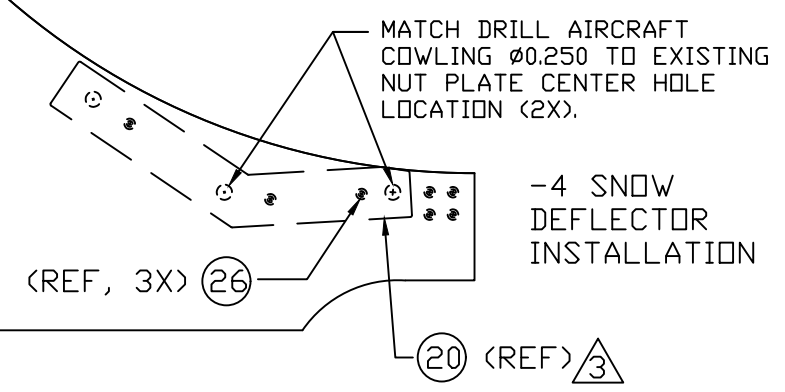
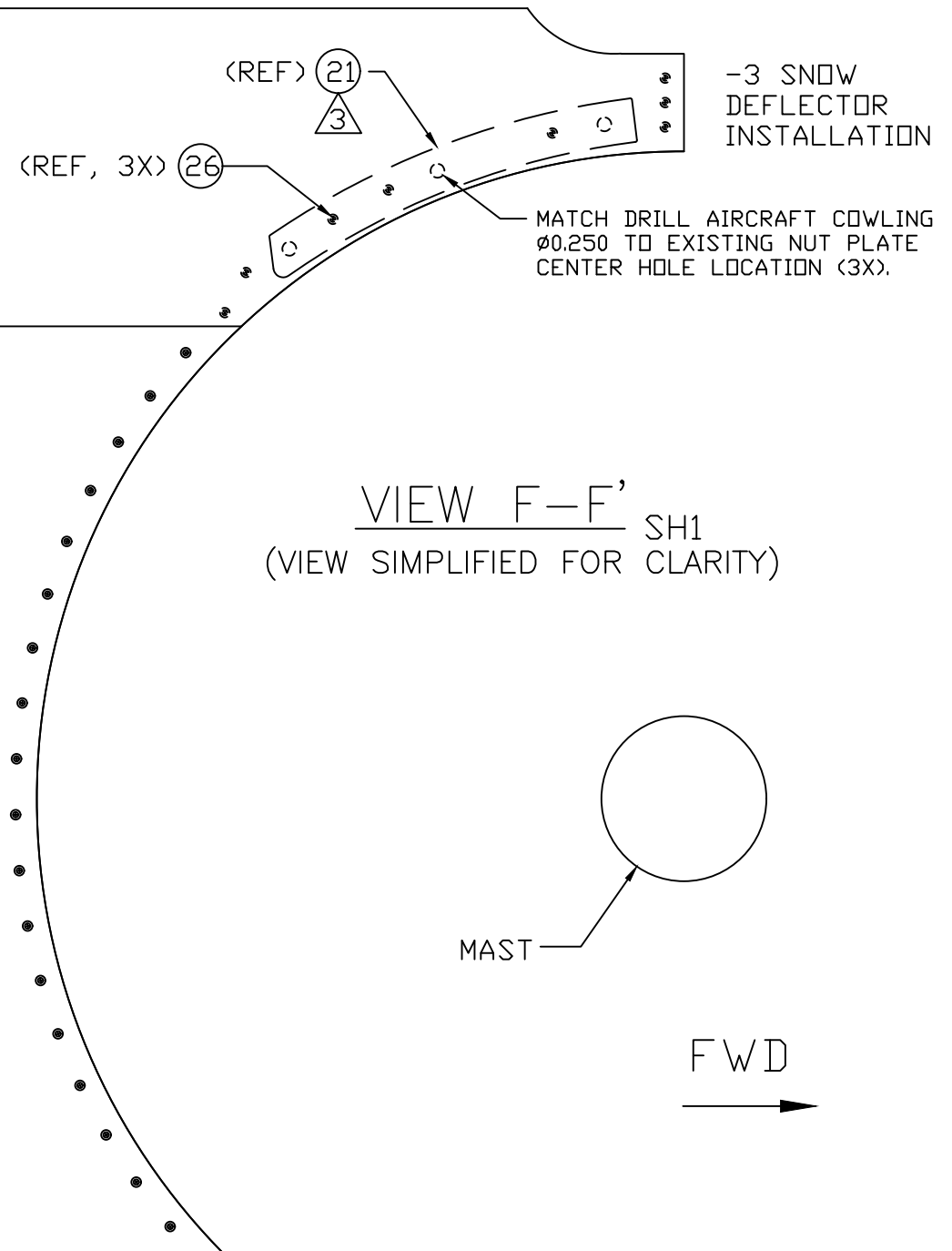


-3 SNOW DEFLECTOR INST'N
(LEFT SIDE)

SEE VIEW K-K
MATCH DRILL Ø0.128 AT ORIENTATION
IN VIEW K-K, C'SINK AIRCRAFT
COWLING Ø0.225 X 100° AND INSTALL
RIVETS THRU THE COWLING AND
RECEPTACLE.

PROTO
N/C

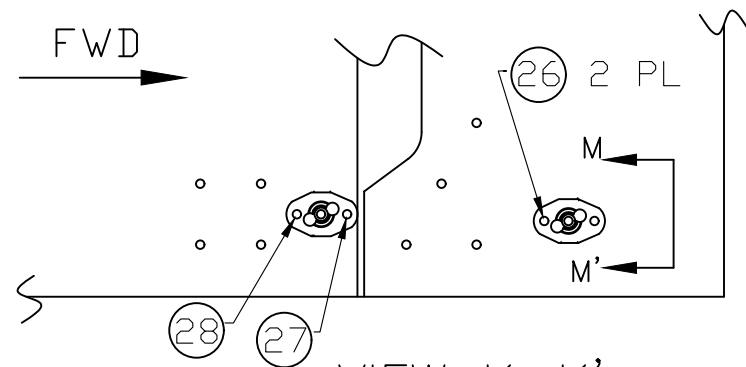
Paravion® Inc. Technology		TITLE			DRAWING NO.		
		DZUS SNOW DEFLECTOR INST'N			407SD-200		
DIMENSIONS IN INCHES		DRAWN BY	APRVD. BY	CHK'D BY	DATE	REV	
TOLERANCES EXCEPT WHERE NOTED:		KRG	PR	LS	09/21/99	J	
.X = ± .1		DO NOT SCALE DRAWING				SHEET	
.XX = ± .05							
.XXX = ± .010		© 2019 PARAVION TECH., INC. PARAVION IS A TRADEMARK OF PARAVION TECHNOLOGY, INC.					
ANGLES = ± 1°							
THREADS:		4 OF 7					
INTERNAL=CLASS 2B							
EXTERNAL=CLASS 2A							



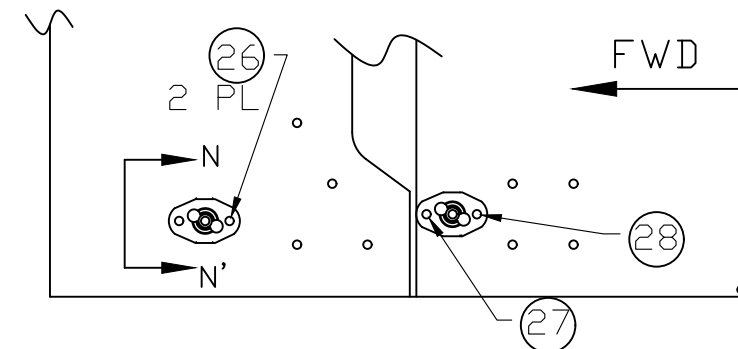
PROTO

N/C

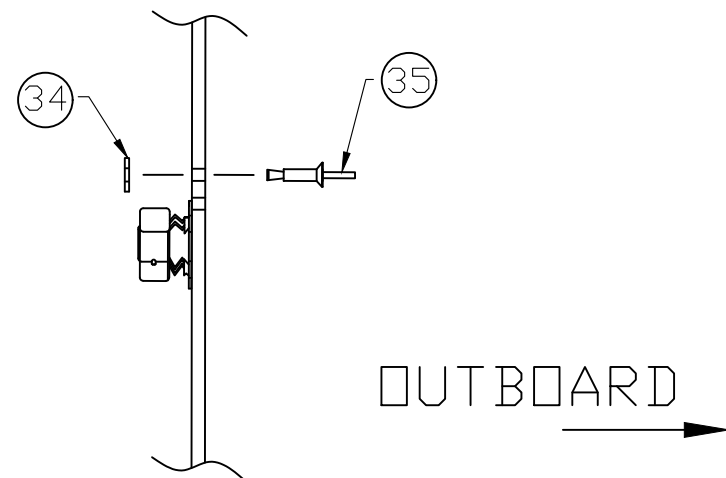
Paravion® Inc. Technology		TITLE DZUS SNOW DEFLECTOR INST'N		DRAWING NO. 407SD-200	
DIMENSIONS IN INCHES TOLERANCES EXCEPT WHERE NOTED: .X = ± .1 .XX = ± .05 .XXX = ± .010 ANGLES = ± 1° THREADS: INTERNAL=CLASS 2B EXTERNAL=CLASS 2A					
DRAWN BY KRG	APRVD. BY PR	CHK'D BY LS	DATE 11/05/99	REV J	ECO
DO NOT SCALE DRAWING				SHEET 5 OF 7	
© 2019 PARAVION TECH., INC. PARAVION IS A TRADEMARK OF PARAVION TECHNOLOGY, INC.					



VIEW K-K' SH4
(VIEW LOOKING OUTBOARD,
SIMPLIFIED FOR CLARITY)
LEFT SIDE



VIEW L-L' SH4
(VIEW LOOKING OUTBOARD,
SIMPLIFIED FOR CLARITY)
RIGHT SIDE

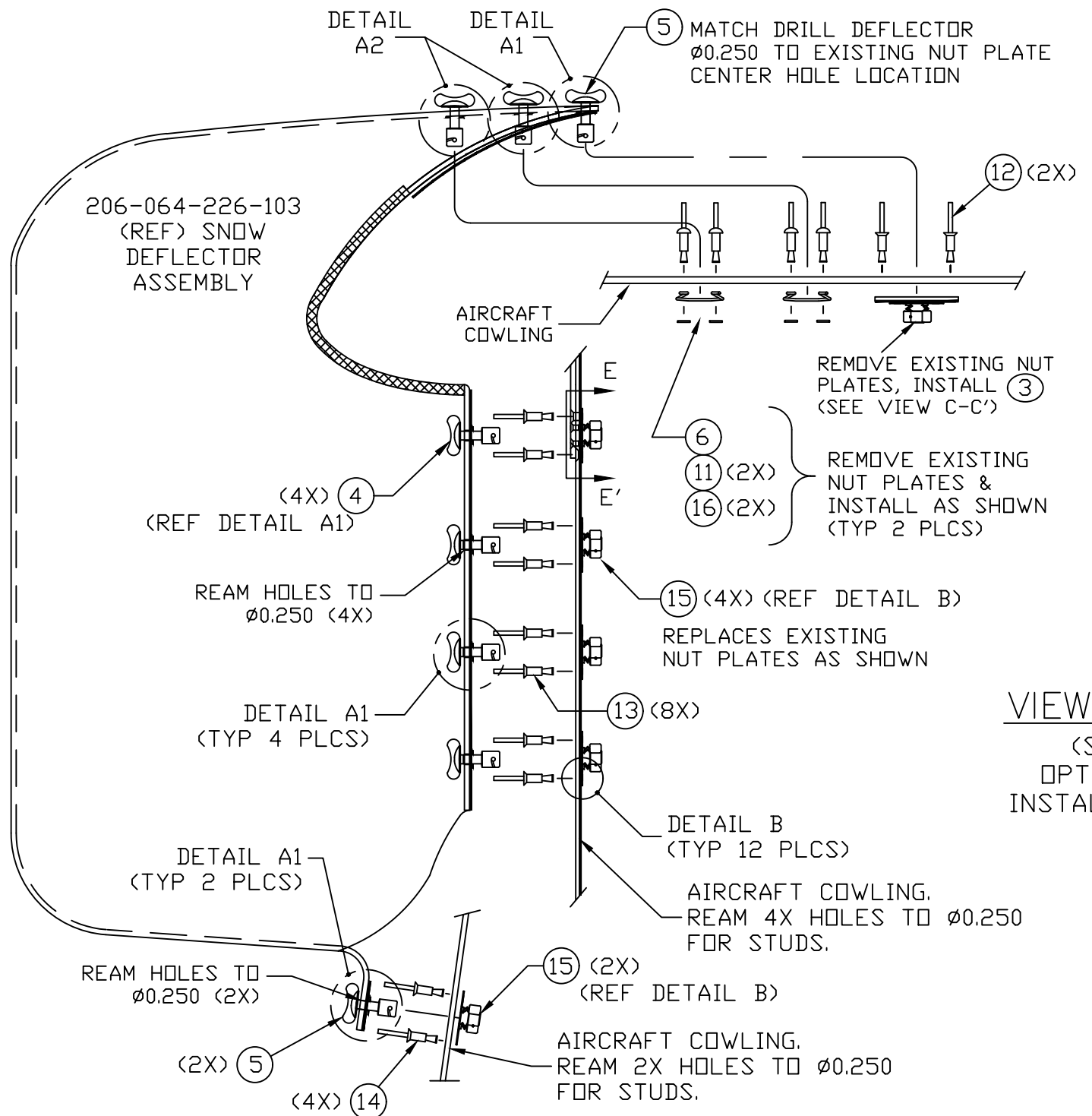


VIEW M-M' & VIEW N-N'

REPAIR EXISTING TOP RIVET HOLE WITH RIVET AND WASHER AS SHOWN ABOVE. REPAIR EXISTING BOTTOM RIVET HOLE PER BHT-ALL-SRM SECTION 4-5-3, EXCEPT REPAIR PLY ON INTERIOR OF COWLING NOT REQUIRED.

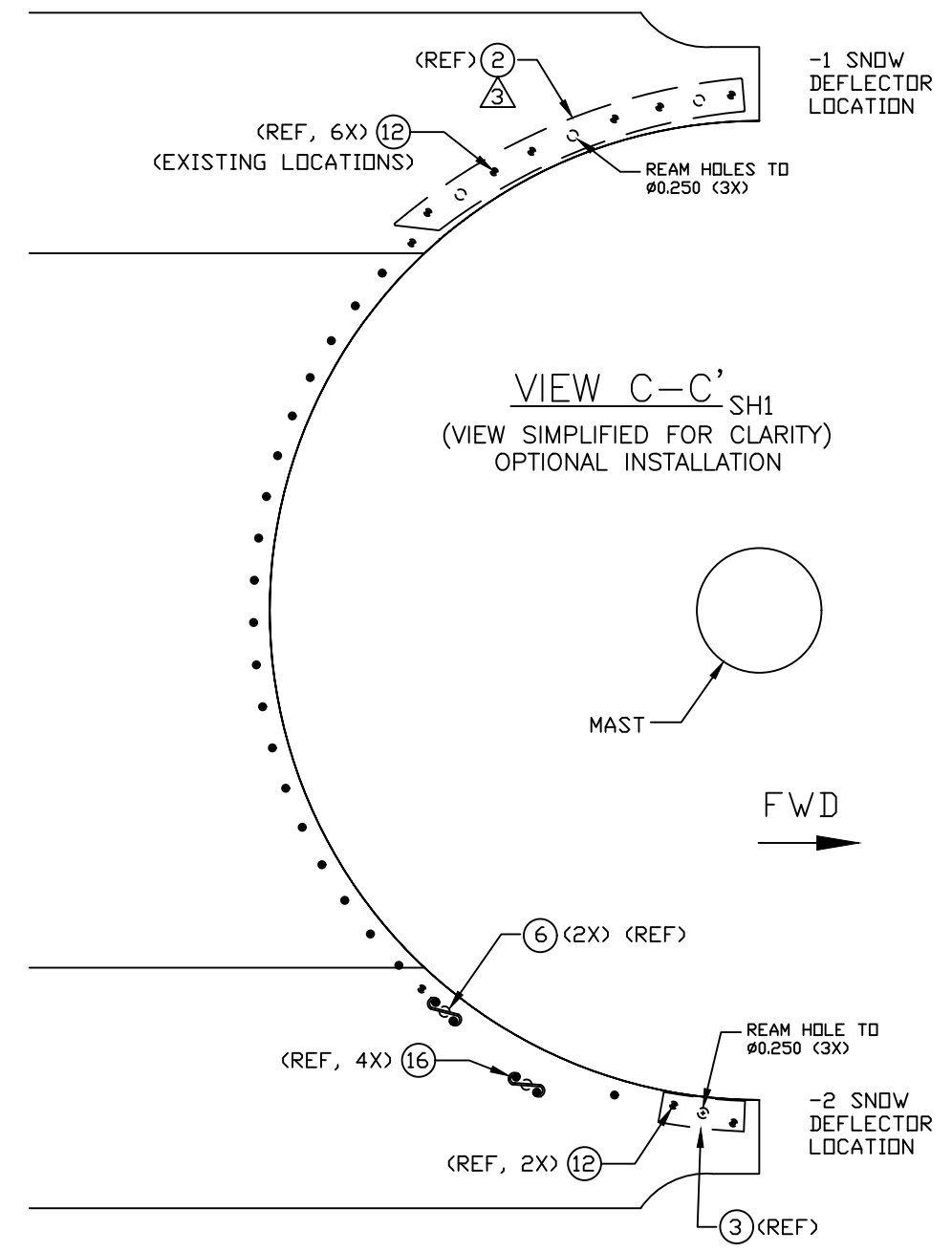
PROTO
N/C

Paravion® Technology Inc.		TITLE DZUS SNOW DEFLECTOR INST'N		DRAWING NO. 407SD-200	
DIMENSIONS IN INCHES		DRAWN BY	APRVD. BY	CHK'D BY	DATE
TOLERANCES EXCEPT WHERE NOTED:		KRG	PR	LS	09/21/99
.X = ± .1		DO NOT SCALE DRAWING			REV J
.XX = ± .05					ECO
.XXX = ± .010					SHEET
ANGLES = ± 1°					6 OF 7
THREADS:		© 2019 PARAVION TECH., INC. PARAVION IS A TRADEMARK OF PARAVION TECHNOLOGY, INC.			
INTERNAL=CLASS 2B					
EXTERNAL=CLASS 2A					



VIEW D-D'
(SH1)
OPTIONAL
INSTALLATION

-2 OPTIONAL SNOW
DEFLECTOR INST'N
(RIGHT SIDE)



Paravion® Technology Inc.		TITLE			DRAWING NO.	
		DZUS SNOW DEFLECTOR INST'N			407SD-200	
DIMENSIONS IN INCHES						
TOLERANCES EXCEPT WHERE NOTED:						
.X = ± .1						
.XX = ± .05						
.XXX = ± .010						
ANGLES = ± 1°						
THREADS:						
INTERNAL=CLASS 2B						
EXTERNAL=CLASS 2A						
PROTO		DRAWN BY	APRVD. BY	CHK'D BY	DATE	REV
N/C		KRG	PR	LS	09/21/99	J
DO NOT SCALE DRAWING					SHEET	
© 2019 PARAVION TECH., INC. PARAVION IS A TRADEMARK OF PARAVION TECHNOLOGY, INC.					7 OF 7	

Bill of Materials

*407SD-200-1/-2, REV. J

ITEM #	P/N	DESCRIPTION	QTY	TYP
0	*407SD-200-1/-2, REV. J	DZUS SNOW DEFLECTOR INST'N	1	KIT
1	407SD-200-1	DZUS SNOW DEFLECTOR INST'N	1	EA
2	407SD-200-2	DZUS SNOW DEFLECTOR INST'N	1	EA

Bill of Materials

*407SD-200-1, REV. J

ITEM #	P/N	DESCRIPTION	QTY	TYP
0	*407SD-200-1, REV. J	DZUS SNOW DEFLECTOR INST'N	1	KIT
1	206SD-T1000-1	DRILL TEMPLATE	1	EA
2	407SD-2500-1	DOUBLER ASSEMBLY	1	EA
4	2351-W20-30-Z3CT	DZUS STUD (Alt: AW35T30 or D4-AW35T30ZCT)	5	EA
5	2351-W20-33-Z3CT	DZUS STUD (Alt: AW35T33 or D4-AW35T33ZCT)	7	EA
9	GH3.5	HALF GROMMET	10	EA
10	NAS1149F0432P	WASHER	18	EA
12	NAS9302B-4-03	RIVET (Alt: CR3212-4-03)	7	EA
13	NAS9302B-5-02	RIVET (Alt: CR3212PR-5-02)	10	EA
14	NAS9302B-5-03	RIVET (Alt: CR3212PR-5-03)	4	EA
15	D4-R35	RECEPTACLE (Alt: R35, CLASS B)	6	EA
19	2351-W20-36-Z3CT	DZUS STUD (Alt: AW35T36 or D4-AW35T36ZCT)	6	EA

Bill of Materials

*407SD-200-2, REV. J

ITEM #	P/N	DESCRIPTION	QTY	TYP
0	*407SD-200-2, REV. J	DZUS SNOW DEFLECTOR INST'N	1	KIT
3	407SD-2500-3	DOUBLER ASSEMBLY	1	EA
4	2351-W20-30-Z3CT	DZUS STUD (Alt: AW35T30 or D4-AW35T30ZCT)	5	EA
5	2351-W20-33-Z3CT	DZUS STUD (Alt: AW35T33 or D4-AW35T33ZCT)	7	EA
6	ES34160-1	RECEPTACLE, DZUS FASTENER	2	EA
7	ES34170-1	DZUS STUD	2	EA
8	GH3	HALF GROMMET	2	EA
9	GH3.5	HALF GROMMET	10	EA
10	NAS1149F0432P	WASHER	20	EA
11	NAS1149FN232P	WASHER	4	EA
12	NAS9302B-4-03	RIVET (Alt: CR3212-4-03)	2	EA
13	NAS9302B-5-02	RIVET (Alt: CR3212PR-5-02)	12	EA
14	NAS9302B-5-03	RIVET (Alt: CR3212PR-5-03)	6	EA
15	D4-R35	RECEPTACLE (Alt: R35, CLASS B)	8	EA
16	NAS1398C3-3	RIVET (Alt: CR2663-3-03)	4	EA
17	ES34170-2	DZUS STUD	2	EA
18	ES34170-3	DZUS STUD	2	EA
19	2351-W20-36-Z3CT	DZUS STUD (Alt: AW35T36 or D4-AW35T36ZCT)	6	EA
29	NAS1149F0332P	WASHER	4	EA

Bill of Materials

*407SD-200-3/-4, REV. J

ITEM #	P/N	DESCRIPTION	QTY	TYP
0	*407SD-200-3/-4, REV. J	DZUS SNOW DEFLECTOR INST'N	1	KIT
1	407SD-200-3	DZUS SNOW DEFLECTOR INST'N	1	EA
2	407SD-200-4	DZUS SNOW DEFLECTOR INST'N	1	EA

Bill of Materials

*407SD-200-3, REV. J

ITEM #	P/N	DESCRIPTION	QTY	TYP
0	*407SD-200-3, REV. J	DZUS SNOW DEFLECTOR INST'N	1	KIT
9	GH3.5	HALF GROMMET	9	EA
10	NAS1149F0432P	WASHER	18	EA
15	D4-R35	RECEPTACLE (Alt: R35, CLASS B)	2	EA
21	407SD-2500-5	DOUBLER ASSY	1	EA
22	407SD-2500-6	DOUBLER ASSY	1	EA
25	2351-W20-39-18S	DZUS STUD (Alt: AW35T39 or D4-AW35T39ZCT)	2	EA
26	NAS9308M-4-02	RIVET	4	EA
27	NAS9308M-4-03	RIVET	7	EA
28	NAS9308M-4-04	RIVET	4	EA
31	2351-W20-33-18S	DZUS STUD (Alt: AW35T33 or 2351-W20-33-Z3CT)	4	EA
32	2351-W20-36-18S	DZUS STUD (Alt: AW35T36 or 2351-W20-36-Z3CT)	5	EA
34	NAS1149CN232R	WASHER	2	EA
35	NAS1399C3-2	RIVET	2	EA

Bill of Materials

*407SD-200-4, REV. J

ITEM #	P/N	DESCRIPTION	QTY	TYP
0	*407SD-200-4, REV. J	DZUS SNOW DEFLECTOR INST'N	1	KIT
8	GH3	HALF GROMMET	1	EA
9	GH3.5	HALF GROMMET	8	EA
10	NAS1149F0432P	WASHER	16	EA
15	D4-R35	RECEPTACLE (Alt: R35, CLASS B)	2	EA
17	ES34170-2	DZUS STUD	1	EA
20	407SD-2500-4	DOUBLER ASSY	1	EA
22	407SD-2500-6	DOUBLER ASSY	1	EA
25	2351-W20-39-18S	DZUS STUD (Alt: AW35T39 or D4-AW35T39ZCT)	2	EA
26	NAS9308M-4-02	RIVET	4	EA
27	NAS9308M-4-03	RIVET	7	EA
28	NAS9308M-4-04	RIVET	4	EA
29	NAS1149F0332P	WASHER	2	EA
31	2351-W20-33-18S	DZUS STUD (Alt: AW35T33 or 2351-W20-33-Z3CT)	3	EA
32	2351-W20-36-18S	DZUS STUD (Alt: AW35T36 or 2351-W20-36-Z3CT)	5	EA
34	NAS1149CN232R	WASHER	2	EA
35	NAS1399C3-2	RIVET	2	EA
