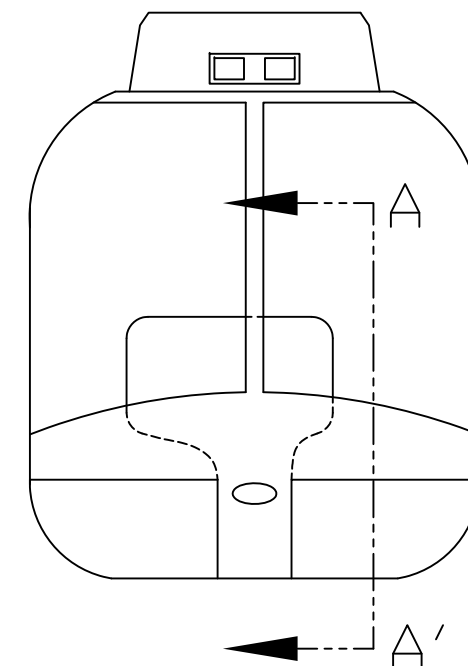
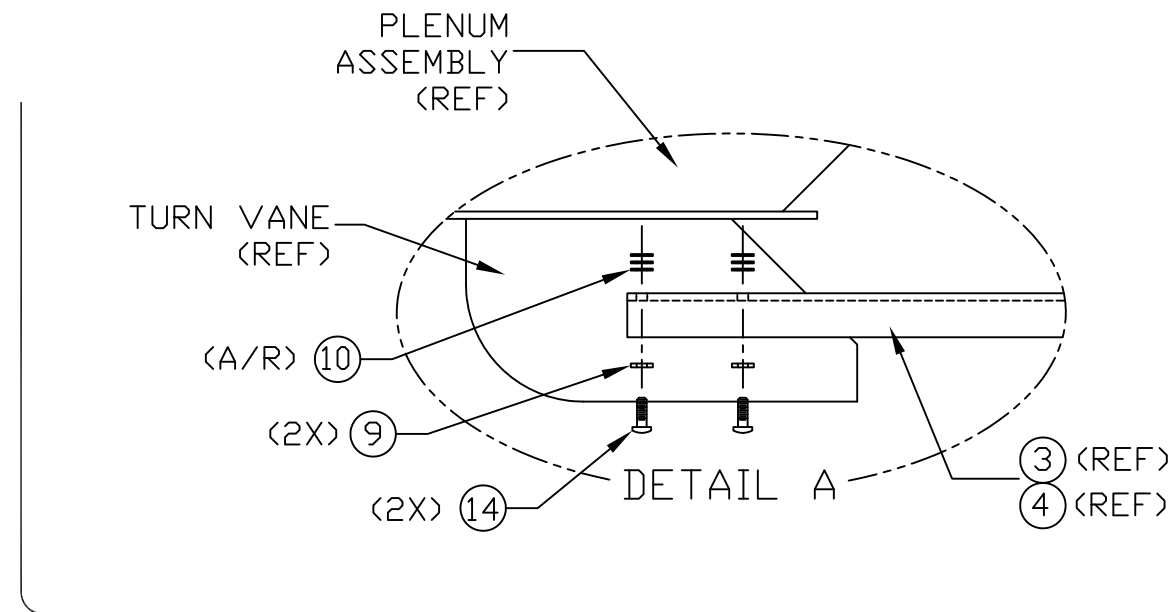
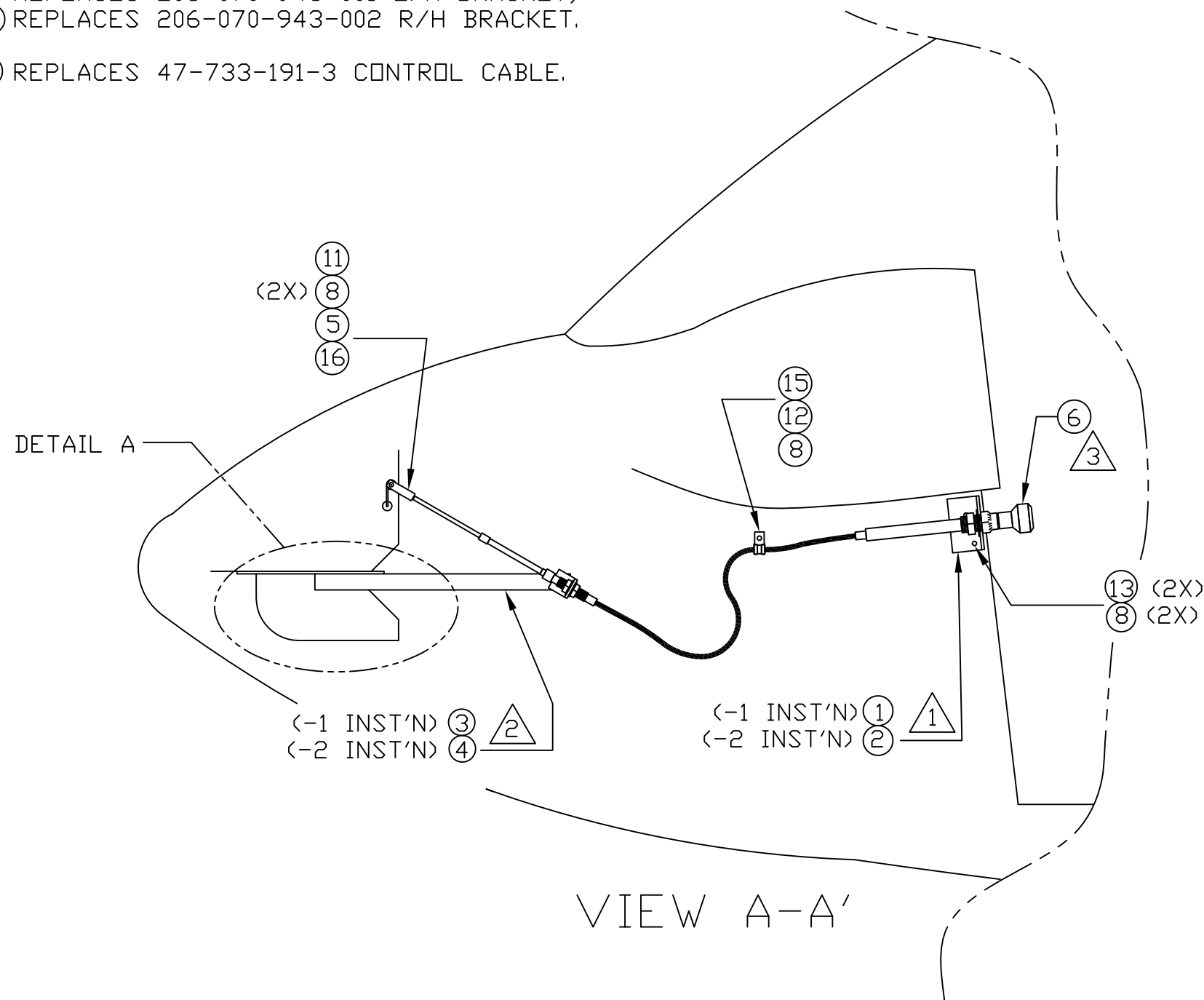


MODEL APPLICABILITY: BELL 206A/B Ser No. 2489 & Subs., 206L, L1, L3, L4, 407

SHEET	REV	ECO	DATE	DESCRIPTION	APR	CHK
1	A		05/07/07	(8) ON CLAMP WAS (7) AN960JD10L.	REB	LS
1	A	1	12/29/15	(14) - BOM HARDWARE UPDATE FROM MS35206-245 TO MS35206-247.		

NOTES:

- 1. (1) REPLACES 206-073-114-105 L/H BRACKET, 2  
(2) REPLACES 206-073-114-106 R/H BRACKET.
- 2. (3) REPLACES 206-070-943-001 L/H BRACKET,  
(4) REPLACES 206-070-943-002 R/H BRACKET.
- 3. (6) REPLACES 47-733-191-3 CONTROL CABLE.



-1 INST'N, L/H (SHOWN)  
-2 INST'N, R/H (MIRROR)

-CONFIDENTIAL INFORMATION-  
THE INFORMATION AND DATA CONTAINED HEREIN IS PROPRIETARY AND IS SUBMITTED IN CONFIDENCE; AND SHALL NOT BE DISCLOSED, USED OR DUPLICATED FOR ANY PURPOSE WHATSOEVER WITHOUT THE PRIOR WRITTEN PERMISSION OF PARAVION TECHNOLOGY, INC.

PROTO  
N/C

Paravion® Inc. Technology		TITLE VENT CONTROL INSTALLATION			DRAWING NO. 206VC-100	
DIMENSIONS IN INCHES TOLERANCES EXCEPT WHERE NOTED: .X = ± .1 .XX = ± .05 .XXX = ± .010 ANGLES = ± 1° THREADS: INTERNAL=CLASS 2B EXTERNAL=CLASS 2A						
DRAWN BY	APRVD. BY	CHK'D BY	DATE	REV	ECO	
BNS	REB	LS	09/22/06	A	1	
DO NOT SCALE DRAWING					SHEET 1 OF 1	
© 2015 PARAVION TECH., INC. PARAVION IS A TRADEMARK OF PARAVION TECHNOLOGY, INC.						

# Bill of Materials

\*206VC-100-1/-2, REV. A ECO1

ITEM #	P/N	DESCRIPTION	QTY	TYP
0	*206VC-100-1/-2, REV. A ECO1	VENT CONTROL INST'N	1	KIT
1	206VC-100-1	VENT CONTROL INST'N, L/H	1	EA
3	206VC-100-2	VENT CONTROL INST'N, R/H	1	EA

---

# Bill of Materials

\*206VC-100-1, REV. A ECO1

ITEM #	P/N	DESCRIPTION	QTY	TYP
0	*206VC-100-1, REV. A ECO1	VENT CONTROL INST'N	1	KIT
1	206VC-1000-1	BRACKET, L/H	1	EA
3	206VC-1100-1	ANGLE BRACKET ASSY, L/H	1	EA
5	206VC-1200-1	THREADED CLEVIS	1	EA
6	ES31000-1	VERNIER CONTROL CABLE	1	EA
8	NAS1149D0332J	WASHER	5	EA
9	NAS1149DN816J	WASHER	2	EA
10	NAS1149DN832J	WASHER	6	EA
11	MS21042L3	NUT	1	EA
12	MS21919WDG5	CLAMP	1	EA
13	MS27039-1-10	SCREW	2	EA
14	MS35206-245	SCREW (ALT: MS35206-247)	2	EA
15	MS35207-263	SCREW	1	EA
16	MS27039-1-12	SCREW	1	EA

---

# Bill of Materials

\*206VC-100-2, REV. A ECO1

ITEM #	P/N	DESCRIPTION	QTY	TYP
0	*206VC-100-2, REV. A ECO1	VENT CONTROL INST'N	1	KIT
2	206VC-1000-2	BRACKET, R/H	1	EA
4	206VC-1100-2	ANGLE BRACKET ASSY, R/H	1	EA
5	206VC-1200-1	THREADED CLEVIS	1	EA
6	ES31000-1	VERNIER CONTROL CABLE	1	EA
8	NAS1149D0332J	WASHER	5	EA
9	NAS1149DN816J	WASHER	2	EA
10	NAS1149DN832J	WASHER	6	EA
11	MS21042L3	NUT	1	EA
12	MS21919WDG5	CLAMP	1	EA
13	MS27039-1-10	SCREW	2	EA
14	MS35206-245	SCREW (ALT: MS35206-247)	2	EA
15	MS35207-263	SCREW	1	EA
16	MS27039-1-12	SCREW	1	EA

---