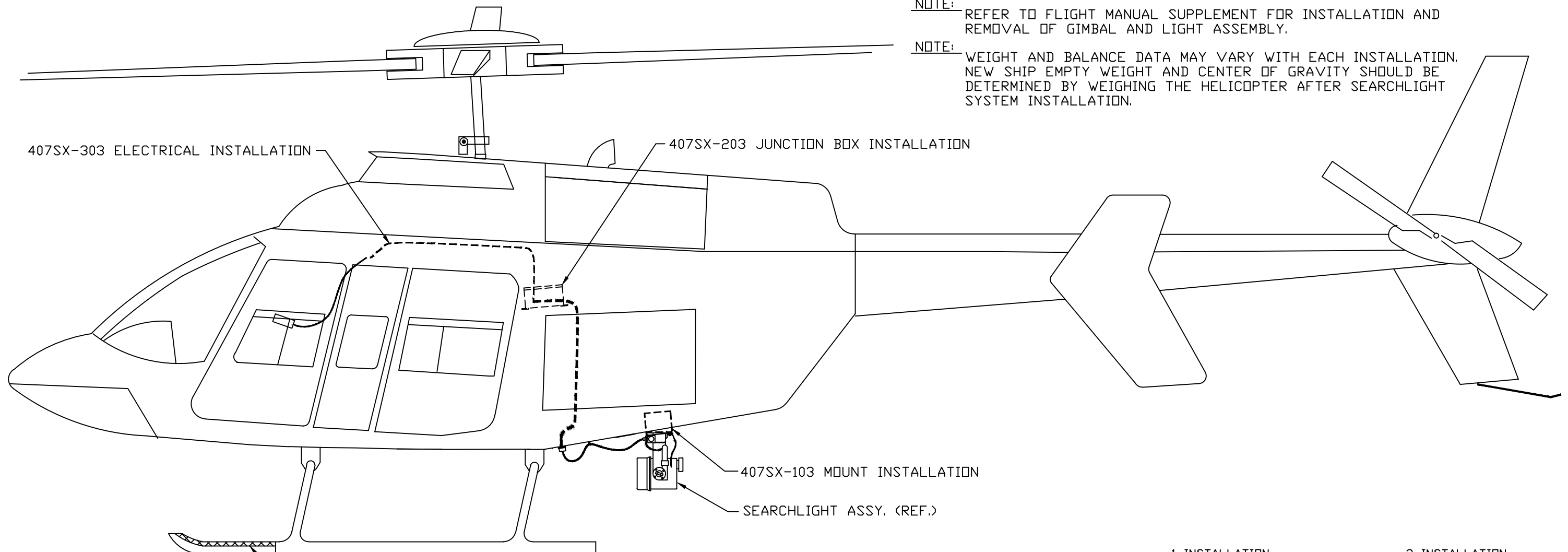


INSTALLATION	MODEL	EFFECTY	SX MOUNT	JUNCTION BOX	ELECTRICAL INST'N	SEARCHLIGHT	SHEET	REV	ECO	DATE	DESCRIPTION	APR	CHK
407SX-100-1	407		407SX-103-1	407SX-203-1	407SX-303-1	SX-16, SPECTROLAB	1	N/C	1	04/27/98	CORRECTED CABLE ROUTE VISUAL	REB	LS
407SX-100-2	407		407SX-103-1	407SX-203-2	407SX-303-2	SX-5, SPECTROLAB							

NOTE: REFER TO FLIGHT MANUAL SUPPLEMENT FOR INSTALLATION AND REMOVAL OF GIMBAL AND LIGHT ASSEMBLY.

NOTE: WEIGHT AND BALANCE DATA MAY VARY WITH EACH INSTALLATION. NEW SHIP EMPTY WEIGHT AND CENTER OF GRAVITY SHOULD BE DETERMINED BY WEIGHING THE HELICOPTER AFTER SEARCHLIGHT SYSTEM INSTALLATION.



WEIGHT AND BALANCE DATA:

ITEM:	-1 INSTALLATION			-2 INSTALLATION		
	407	407	407	407	407	407
	WEIGHT: (LBS)	F.S.(IN)	MOMENT	WEIGHT: (LBS)	F.S.(IN)	MOMENT
MOUNT BRACKET INST'N	5.25	182.1	956	5.25	182.1	956
ELECTRICAL WIRING INST'N	6.25	160.4	1003	6.25	160.4	1003
JUNCTION BOX INST'N (-1)	8.0	158.0	1264	6.0	158.0	948
*SEARCHLIGHT & GIMBAL ASSY	35.0	182.1	6374	20.0	182.1	3642
*CONTROLS & CABLE	1.3	75.0	98	1.3	75.0	98

\* REMOVABLE EQUIPMENT

PAINT TOP AND INBOARD SIDES OF THIS SECTION OF L.H. & R.H. LANDING GEAR SKID TUBES WITH FLAT (NON REFLECTIVE) BLACK ENAMEL.

-1/-2 INSTALLATION

<b>Paravion® Inc.</b> Technology		TITLE 407SX SYSTEM CONFIGURATION				DRAWING NO. 407SX-100		
DIMENSIONS IN INCHES		DRAWN BY	APRVD. BY	CHK'D BY	DATE	REV	ECO	
TOLERANCES EXCEPT WHERE NOTED:		RHSM			12/04/97	N/C	1	
.X = ± .1		DO NOT SCALE DRAWING					SHEET	
.XX = ± .05		© 1997 PARAVION TECH., INC. PARAVION IS A TRADEMARK OF PARAVION TECHNOLOGY, INC.					1 OF 1	
.XXX = ± .010								
ANGLES = ± 1°								

# Bill of Materials

\*407SX-100-1, REV. N/C ECO 1

ITEM #	P/N	DESCRIPTION	QTY	TYP
0	*407SX-100-1, REV. N/C ECO 1	SYSTEM CONFIGURATION	1	KIT
1	407SX-103-1	MOUNT INST'N	1	EA
2	407SX-203-1	JUNCTION BOX INST'N	1	EA
3	407SX-303-1	ELECTRICAL INST'N	1	EA



# Bill of Materials

\*407SX-100-2, REV. N/C ECO 1

ITEM #	P/N	DESCRIPTION	QTY	TYP
0	*407SX-100-2, REV. N/C ECO 1	SYSTEM CONFIGURATION	1	KIT
1	407SX-103-1	MOUNT INST'N	1	EA
2	407SX-203-2	JUNCTION BOX INST'N	1	EA
3	407SX-303-2	ELECTRICAL INST'N	1	EA

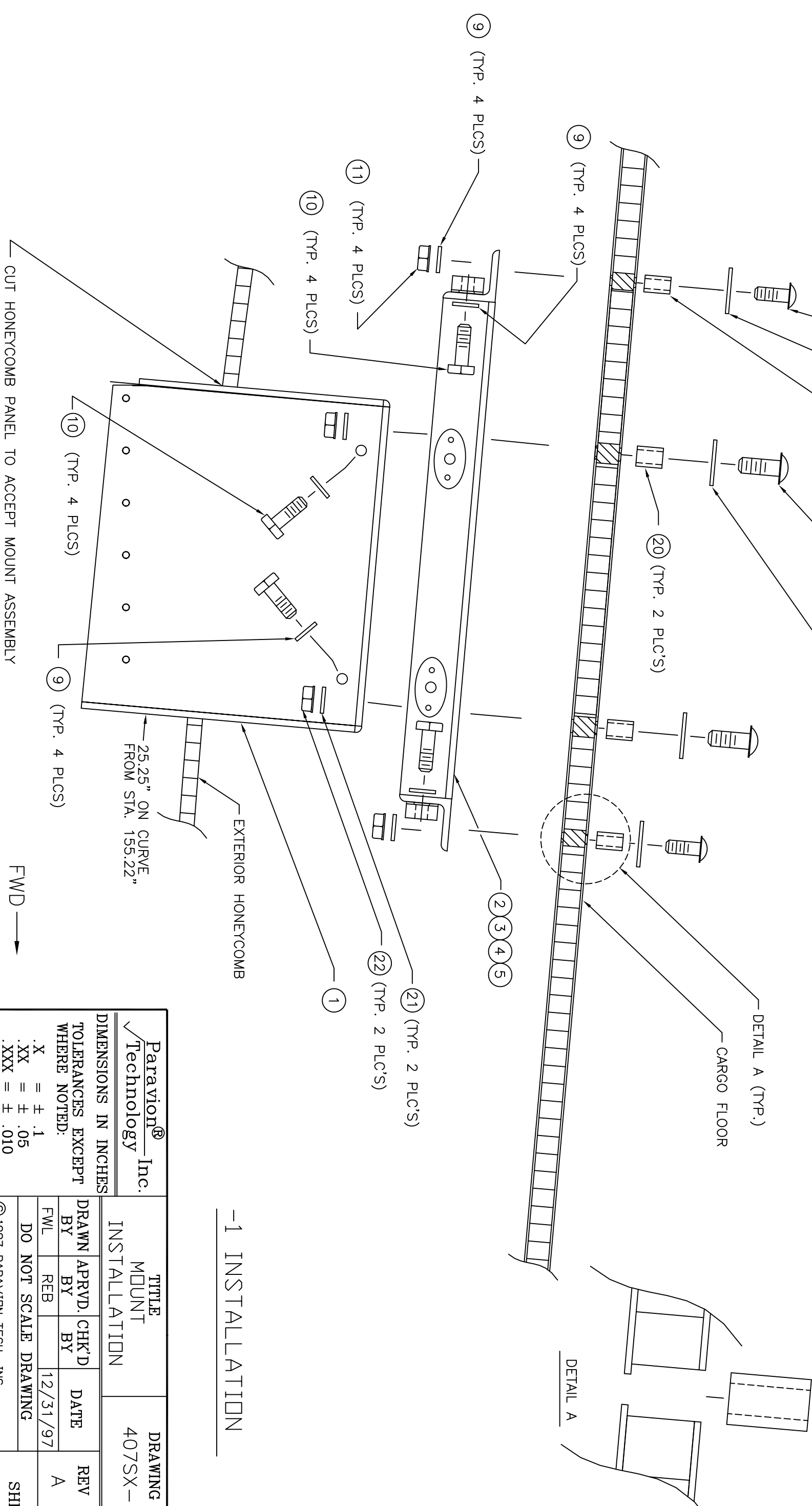


ECO	SHEET	REV	DATE	DESCRIPTION	APR
	1	A	04/27/98	ADDED ITEM 35 PLACARD	

35 LOCATE ADJACENT TO EXISTING AIRSPEED LIMITATION PLACARD

- 8 (TYP. 4 PLCS)
- 7 (TYP. 4 PLCS)
- 6 (TYP. 4 PLCS)
- 18 (TYP. 2 PLC'S)
- 19 (TYP. 2 PLC'S)

NOTE: INSTALL 17 PLACARD IN CONVENIENT LOCATION ON THE INSIDE OF CARGO DOOR, REPLACING PREVIOUS WEIGHT LIMITATION PLACARD.



-1 INSTALLATION

Paravion® Inc. Technology		TITLE MOUNT		DRAWING NO. 407SX-103	
DIMENSIONS IN INCHES TOLERANCES EXCEPT WHERE NOTED: .X = ± .1 .XX = ± .05 .XXX = ± .010 ANGLES = ± 1°		INSTALLATION			
DRAWN BY FWL	APRVD. BY REB	CHK'D BY 12/31/97	DATE 12/31/97	REV A	ECO
DO NOT SCALE DRAWING				SHEET 1 OF 3	
© 1997 PARAVION TECH, INC. PARAVION IS A TRADEMARK OF PARAVION TECHNOLOGY, INC.					

CUT HONEYCOMB PANEL TO ACCEPT MOUNT ASSEMBLY

25.25" ON CURVE FROM STA. 155.22"

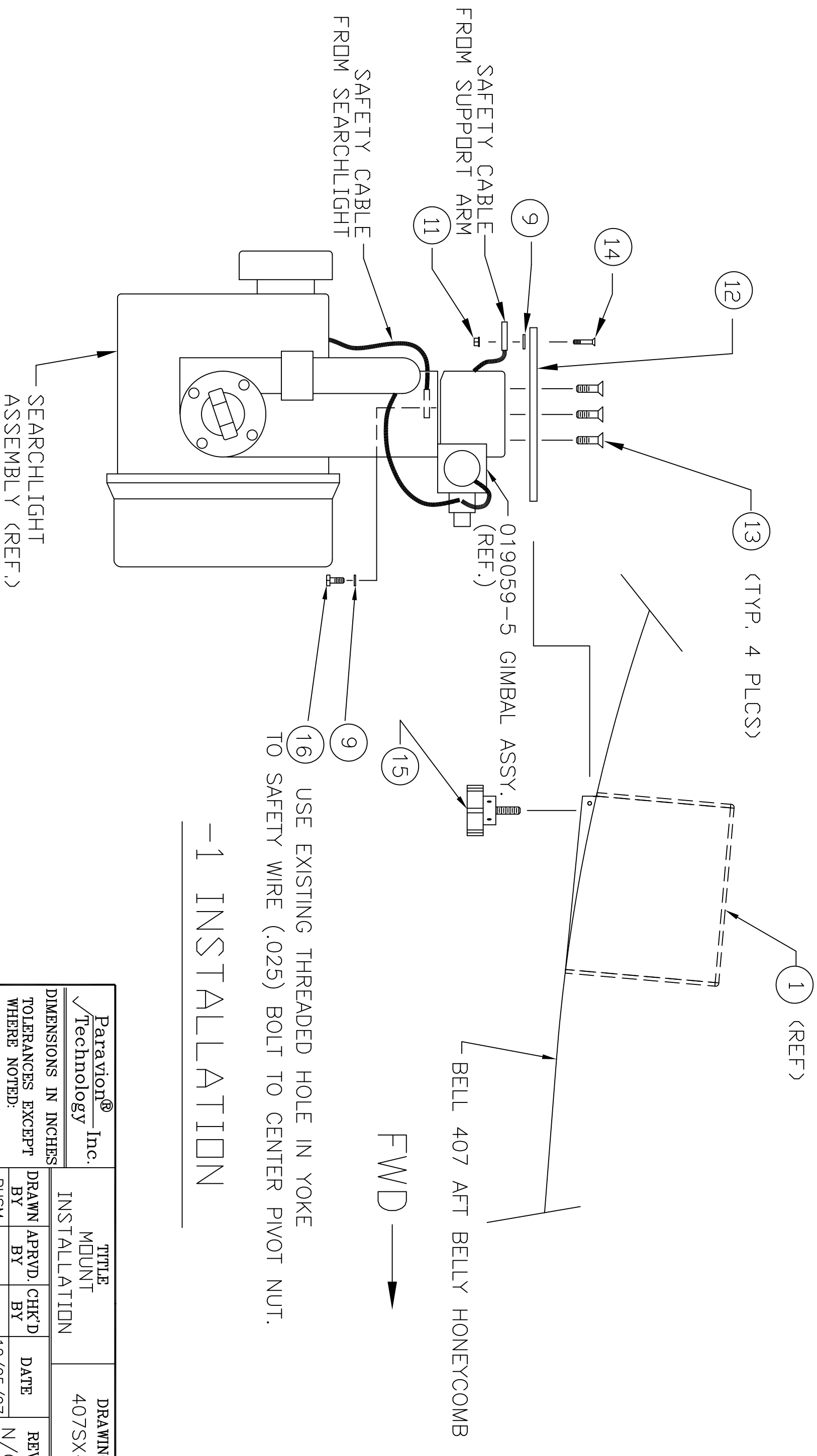
EXTERIOR HONEYCOMB

DETAIL A (TYP.)

CARGO FLOOR

DETAIL A

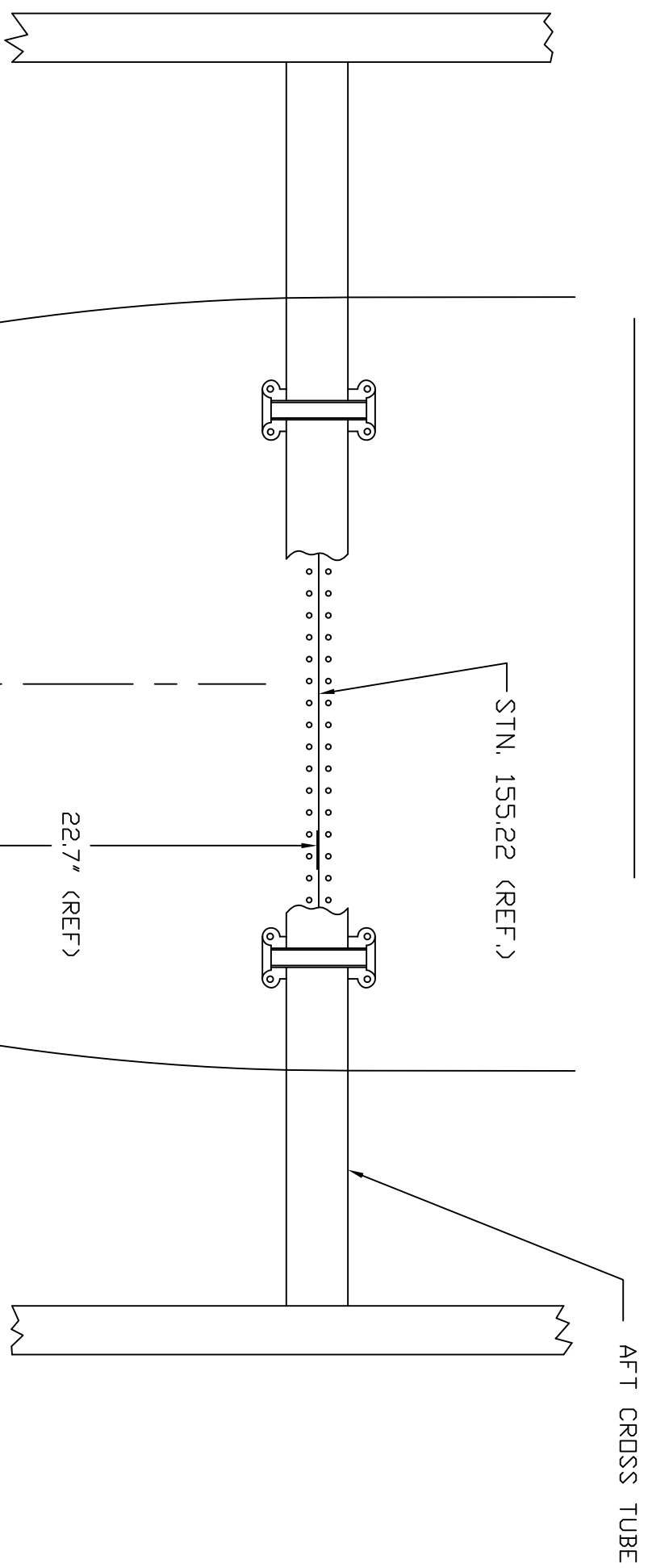
FWD →



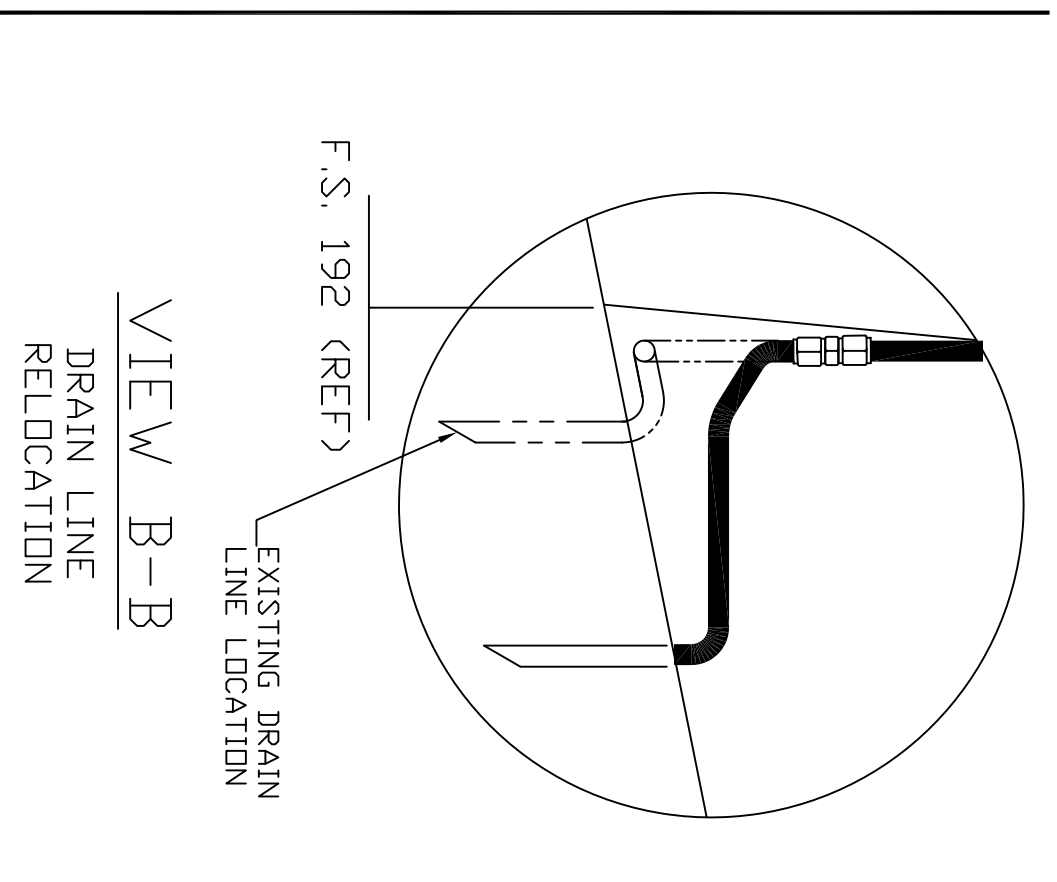
## -1 INSTALLATION

Paravion® Inc. Technology		TITLE MOUNT INSTALLATION		DRAWING NO. 407SX-103	
DIMENSIONS IN INCHES TOLERANCES EXCEPT WHERE NOTED:		DRAWN BY RHSM	APPRVD. BY	CHK'D BY	DATE 12/05/97
.X = ± .1 .XX = ± .05 .XXX = ± .010 ANGLES = ± 1°		DO NOT SCALE DRAWING		REV N/C	ECO
© 1997 PARAVION TECH, INC. PARAVION IS A TRADEMARK OF PARAVION TECHNOLOGY, INC.					SHEET 2 OF 3

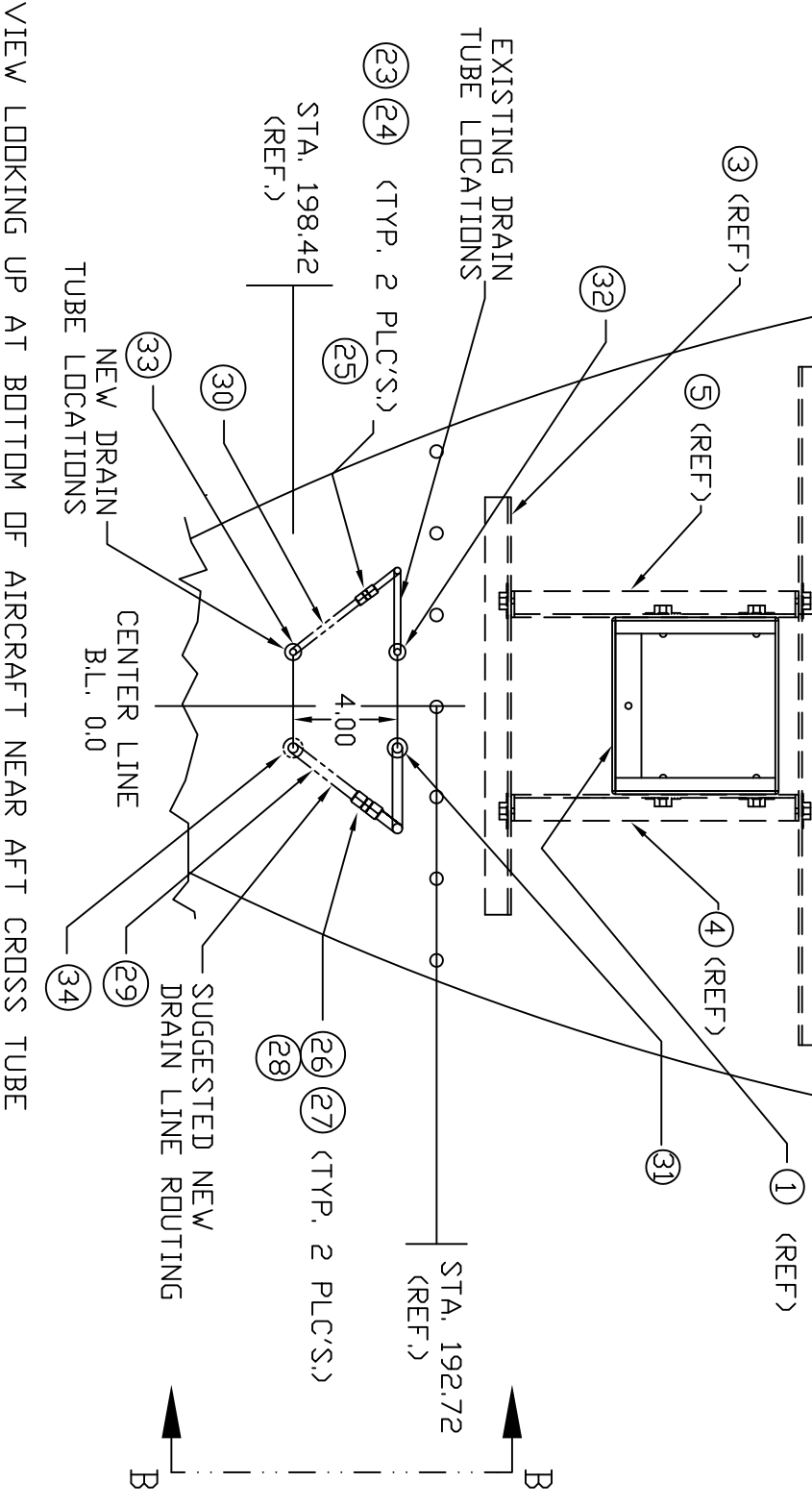
# -1 INSTALLATION



SCALED UP  
FOR CLARITY



FWD



Paravion® Inc. Technology		TITLE MOUNT INSTALLATION		DRAWING NO. 407SX-103	
DIMENSIONS IN INCHES					
TOLERANCES EXCEPT WHERE NOTED:					
X	= ±	.1			
.XX	= ±	.05			
.XXX	= ±	.010			
ANGLES	= ±	1°			
DRAWN BY	APPRVD. BY	CHK'D BY	DATE	REV	ECO
RHSM			12/05/97	N/C	
DO NOT SCALE DRAWING					SHEET 3 OF 3
© 1997 PARAVION TECH, INC. PARAVION IS A TRADEMARK OF PARAVION TECHNOLOGY, INC.					

# Bill of Materials

\*407SX-103-1, REV. A

ITEM #	P/N	DESCRIPTION	QTY	TYP
0	*407SX-103-1, REV. A	MOUNT INST'N	1	KIT
1	206SX-2000-1	MOUNT ASSY.	1	EA.
2	407SX-2100-1	SUPPORT BRACKET ASSY.	1	EA.
3	407SX-2100-2	SUPPORT BRACKET ASSY.	1	EA.
4	407SX-2100-3	SUPPORT BRACKET ASSY.	1	EA.
5	407SX-2100-4	SUPPORT BRACKET ASSY.	1	EA.
6	NAS43DD3-32	SPACER	4	EA.
7	AN970-3	WASHER	4	EA.
8	AN525-10R16	SCREW	4	EA.
9	NAS1149F0363P	WASHER	14	EA.
10	AN3-5A	BOLT	8	EA.
11	MS21042L3	NUT	5	EA.
12	206SX-2200-1	SUPPORT PLATE	1	EA.
13	MS24693-296	SCREW	4	EA.
14	MS24693-273	SCREW	1	EA.
15	206SX-2300-1	LOCKING KNOB	1	EA.
16	AN3H-3A	BOLT	1	EA.
17	206SX-5000-1	PLACARD (On Cargo Comp. Door)	1	EA.
18	AN525-416R18	SCREW	2	EA.
19	AN970-4	WASHER	2	EA.
20	NAS43DD4-32	SPACER	2	EA.
21	NAS1149F0432P	WASHER	2	EA.
22	MS21042L4	NUT	2	EA.
23	MS20818-4C	FLARE NUT (ALT: MS20818-4J)	2	EA.
24	MS20819-4C	SLEEVE (ALT: MS20819-4J)	2	EA.
25	MS20815-4C	UNION (ALT: MS20815-4J)	1	EA.
26	MS20818-6D	FLARENUT	2	EA.

# Bill of Materials

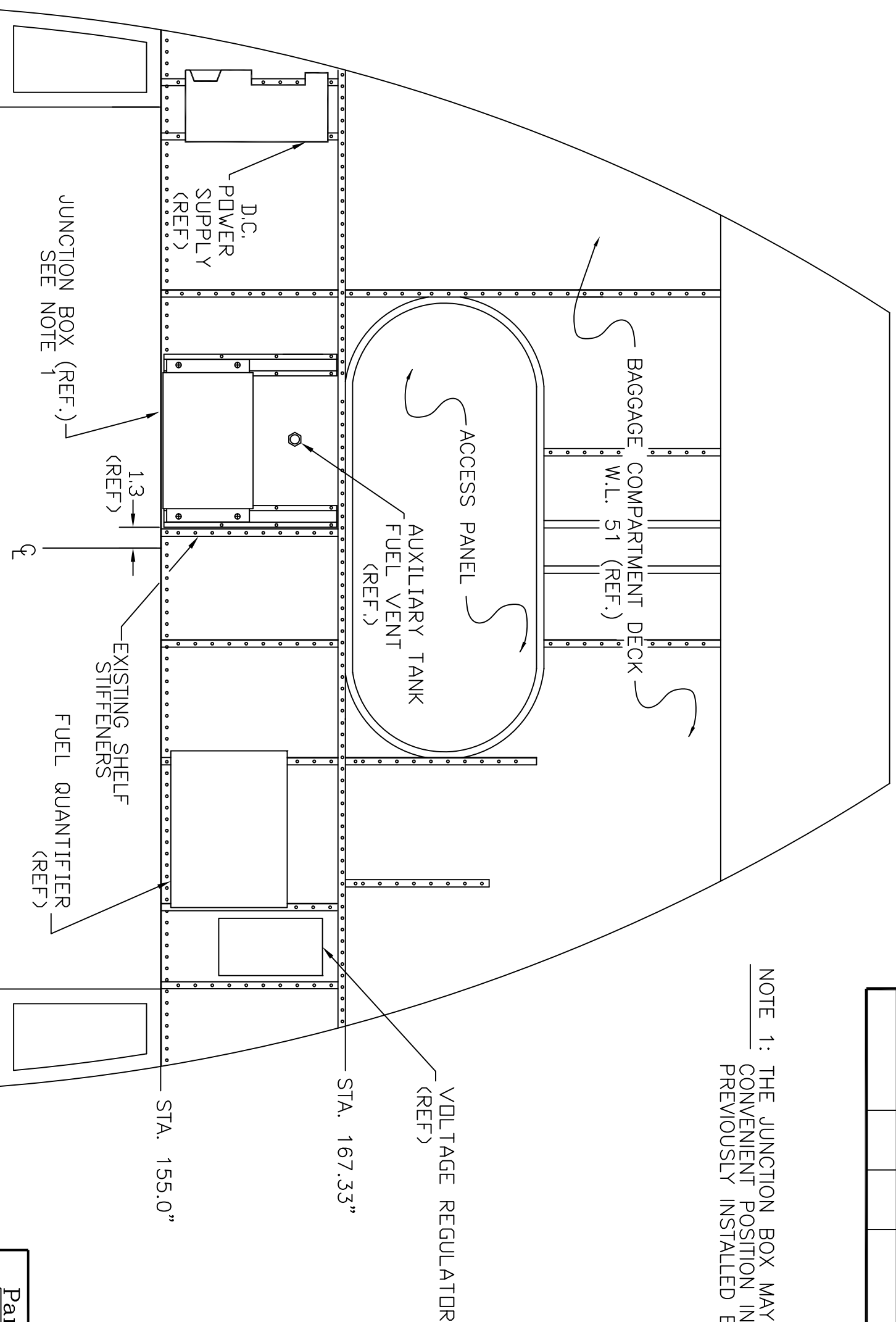
\*407SX-103-1, REV. A

ITEM #	P/N	DESCRIPTION	QTY	TYP
27	MS20819-6D	SLEEVE	2	EA.
28	MS20815-6D	UNION	1	EA.
29	DRAINTUBE	0.375" x 0.035" WALL,5052-0	11	IN.
30	DRAINTUBE	0.25" x 0.035" WALL,304SS	11	IN.
31	9688K126	5/8" BUTTON	1	EA.
32	9688K125	1/2" BUTTON	1	EA.
33	MS35489-94	GROMMET	1	EA.
34	MS35489-98	GROMMET	1	EA.
35	407SX-5100-1	PLACARD	1	EA.



SHEET	REV	ECO	DATE	DESCRIPTION	APR	CHK
1,2	N/C	1	04/22/98	CORRECTED VISUAL OF DECK, ADDED (REF.) EXISTING COMPONENTS FOR CLARITY. REMOVED DIM 10.25 SUGGESTED JN. BOX LOCATION. REMOVED WASHERS, SHIT. 2	REB	LS

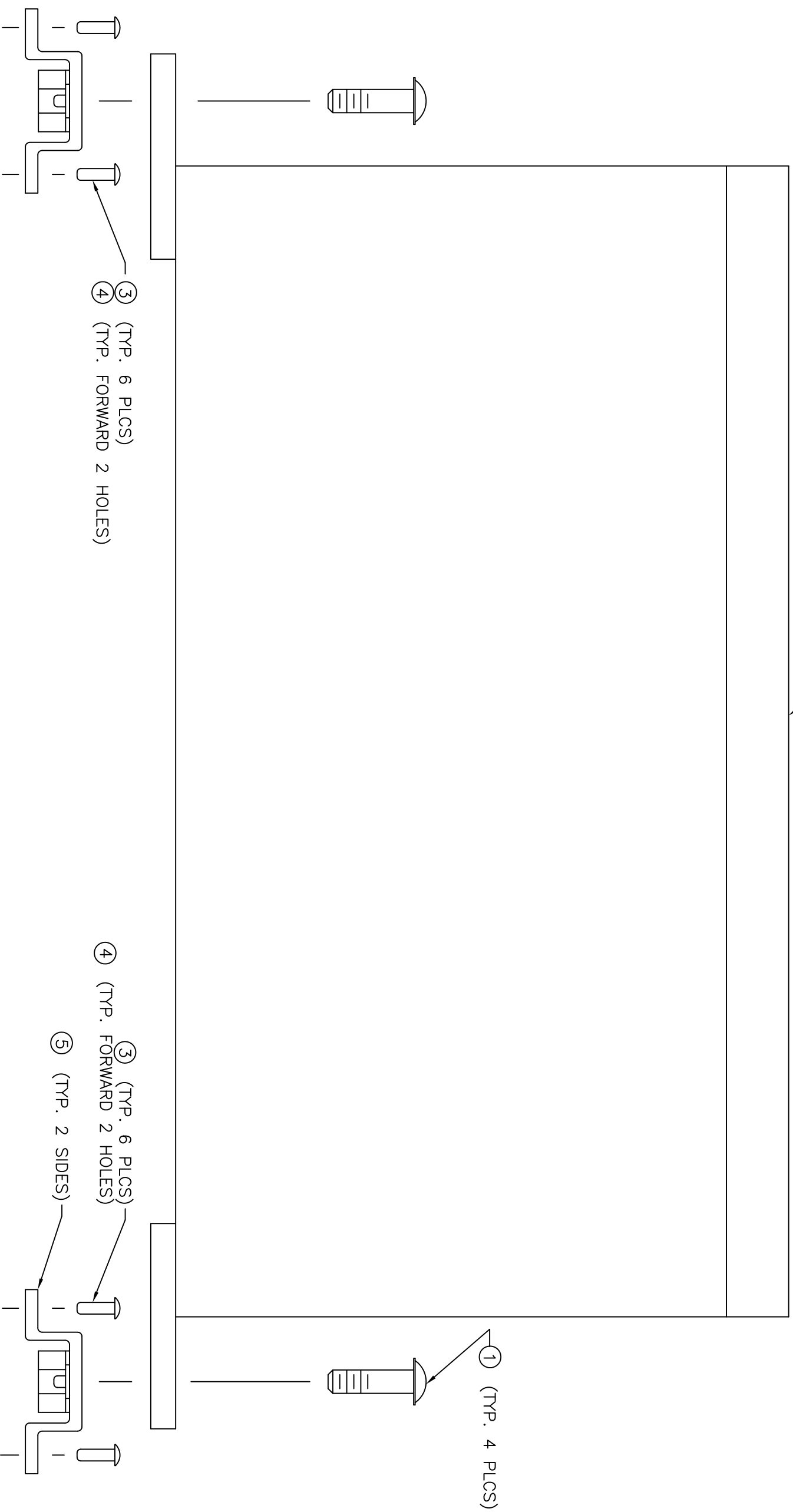
NOTE 1: THE JUNCTION BOX MAY BE LOCATED IN ANY CONVENIENT POSITION IN THIS AREA AWAY FROM PREVIOUSLY INSTALLED EQUIPMENT.



-1/-2 INSTALLATION

Paravion® Inc. Technology				TITLE JUNCTION BOX INSTALLATION		DRAWING NO. 407SX-203	
DIMENSIONS IN INCHES TOLERANCES EXCEPT WHERE NOTED: .X = ± .1 .XX = ± .05 .XXX = ± .010 ANGLES = ± 1°				DRAWN BY RHSM	APPRVD. BY	CHK'D BY	DATE 12/05/97
DO NOT SCALE DRAWING				REV N/C	ECO 1	SHEET 1 OF 2	
© 1997 PARAVION TECH, INC. PARAVION IS A TRADEMARK OF PARAVION TECHNOLOGY, INC.							

020706 JUNCTION BOX ASSEMBLY (REF) SPECTROLAB (-1 INSTALLATION)  
 025234-11 JUNCTION BOX ASSEMBLY (REF) SPECTROLAB (-2 INSTALLATION)



W.L. 50.0" REF

-1 / -2 INSTALLATION  
 VIEW LOOKING AFT AT STA. 155.0"

BREAK ALL SHARP EDGES

Paravion® Inc. Technology		TITLE JUNCTION BOX INSTALLATION		DRAWING NO. 407SX-203	
DIMENSIONS IN INCHES TOLERANCES EXCEPT WHERE NOTED:					
.X = ± .1 .XX = ± .05 .XXX = ± .010 ANGLES = ± 1°		DRAWN BY RHSM	APPVD. BY	CHK'D BY	DATE 12/05/97
DO NOT SCALE DRAWING				REV N/C	ECO 1
© 1997 PARAVION TECH, INC. PARAVION IS A TRADEMARK OF PARAVION TECHNOLOGY, INC.					SHEET 2 OF 2

# Bill of Materials

**\*407SX-203-1, REV. N/C ECO 1**

<b>ITEM #</b>	<b>P/N</b>	<b>DESCRIPTION</b>	<b>QTY</b>	<b>TYP</b>
0	*407SX-203-1, REV. N/C ECO 1	JUNCTION BOX INSTN	1	KIT
1	AN525-10R9	SCREW	4	EA.
2	-	-	-	-
3	MS20470AD3-4	RIVET	12	EA.
4	MS20470AD3-6	RIVET	4	EA.
5	206SX-2105-1	BEAM ASSEMBLY	2	EA.



# Bill of Materials

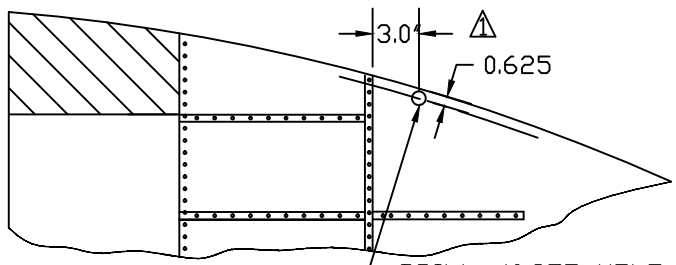
\*407SX-203-2, REV. N/C ECO1

ITEM #	P/N	DESCRIPTION	QTY	TYP
0	*407SX-203-2, REV. N/C ECO1	JUNCTION BOX INSTN	1	KIT
1	AN525-10R9	SCREW	4	EA.
2	-	-	-	-
3	MS20470AD3-4	RIVET	12	EA.
4	MS20470AD3-6	RIVET	4	EA.
5	206SX-2105-1	BEAM ASSEMBLY	2	EA.

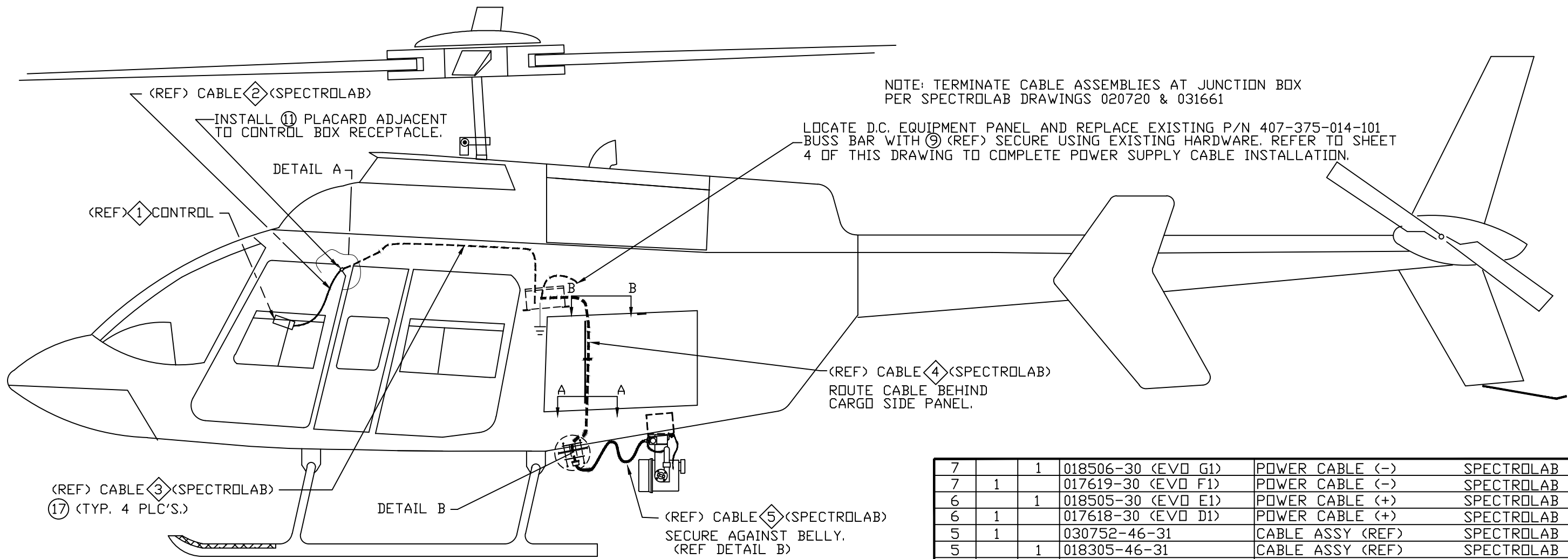


SHEET	REV	ECO	DATE	DESCRIPTION	APR	CHK
1,2,3,4	N/C	1	04/27/98	VIEW A-A DIM 18.0 WAS 15.0; SH.2 ADDED (12) MINOR RELOC. CNTRL. CABLE RECEPTACLE; ADDED SH. 3, 4 DETAIL, (6), (7) CALL-OUT FOR CLARITY.	REB	LS
1		2	06/26/07	(20) (BOM) WAS 4164.	REB	LS
1		3	02/29/08	(3) (BOM) WAS 324112.	REB	CEH

VIEW B-B  
SCALE 2 : 1



DRILL  $\phi 0.875$  HOLE AND INSTALL SPLIT GROMMET (1)



NOTE: TERMINATE CABLE ASSEMBLIES AT JUNCTION BOX PER SPECTROLAB DRAWINGS 020720 & 031661  
LOCATE D.C. EQUIPMENT PANEL AND REPLACE EXISTING P/N 407-375-014-101 BUSS BAR WITH (9) (REF) SECURE USING EXISTING HARDWARE. REFER TO SHEET 4 OF THIS DRAWING TO COMPLETE POWER SUPPLY CABLE INSTALLATION.

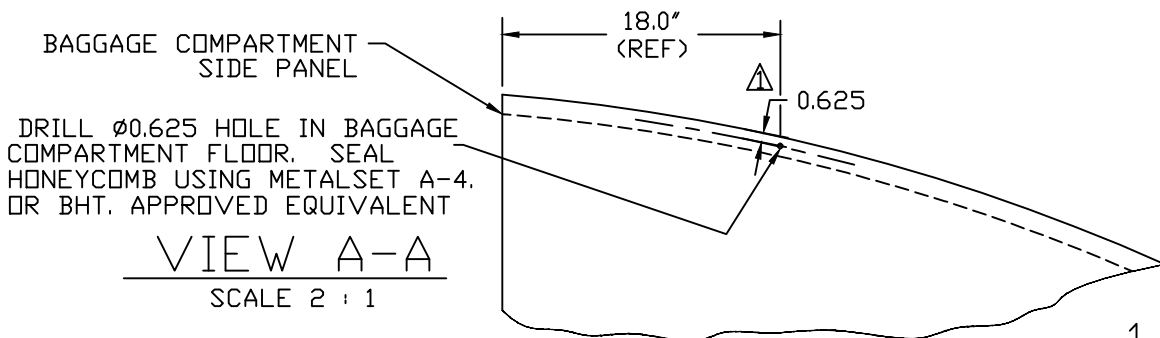
(REF) CABLE (3) (SPECTROLAB)  
(17) (TYP. 4 PLC'S.)

(REF) CABLE (4) (SPECTROLAB)  
ROUTE CABLE BEHIND CARGO SIDE PANEL.

(REF) CABLE (5) (SPECTROLAB)  
SECURE AGAINST BELLY.  
(REF DETAIL B)

7		1	018506-30 (EVD G1)	POWER CABLE (-)	SPECTROLAB
7	1		017619-30 (EVD F1)	POWER CABLE (-)	SPECTROLAB
6		1	018505-30 (EVD E1)	POWER CABLE (+)	SPECTROLAB
6	1		017618-30 (EVD D1)	POWER CABLE (+)	SPECTROLAB
5	1		030752-46-31	CABLE ASSY (REF)	SPECTROLAB
5		1	018305-46-31	CABLE ASSY (REF)	SPECTROLAB
4	1		030751-100	CABLE ASSY (REF)	SPECTROLAB
4		1	018306-100	CABLE ASSY (REF)	SPECTROLAB
3	1		030767-160	CABLE ASSY (REF)	SPECTROLAB
3		1	018479-160	CABLE ASSY (REF)	SPECTROLAB
2	1	1	030611-15-72	CABLE ASSY (REF)	SPECTROLAB
1	1	1	030039	CONTROL (REF)	SPECTROLAB

ITEM	QTY.	QTY.	PART NUMBER	DESCRIPTION
(X)	-2	-1		
	INST	INST		



DRILL  $\phi 0.625$  HOLE IN BAGGAGE COMPARTMENT FLOOR. SEAL HONEYCOMB USING METALSET A-4. OR BHT. APPROVED EQUIVALENT

VIEW A-A  
SCALE 2 : 1

-1/-2 INSTALLATION

△ THESE MEASUREMENTS ARE APPROXIMATE AND ACTUAL LOCATIONS MAY VARY DUE TO MODEL DIFFERENCES AND PREVIOUSLY INSTALLED EQUIPMENT. LOCATE AWAY FROM ANY EXISTING LINES OR WIRE BUNDLES. CABLE MUST BE ROUTED BEHIND THE BAGGAGE COMPARTMENT SIDE PANEL.

**Paravion® Inc.**  
Technology

**TITLE**  
ELECTRICAL INSTALLATION

**DRAWING NO.**  
407SX-303

**DIMENSIONS IN INCHES**

**TOLERANCES EXCEPT WHERE NOTED:**  
.X = ± .1  
.XX = ± .05  
.XXX = ± .010  
ANGLES = ± 1°

DRAWN BY	APRVD. BY	CHK'D BY	DATE	REV	ECO
RHSM	REB	LS	12/05/97	N/C	3

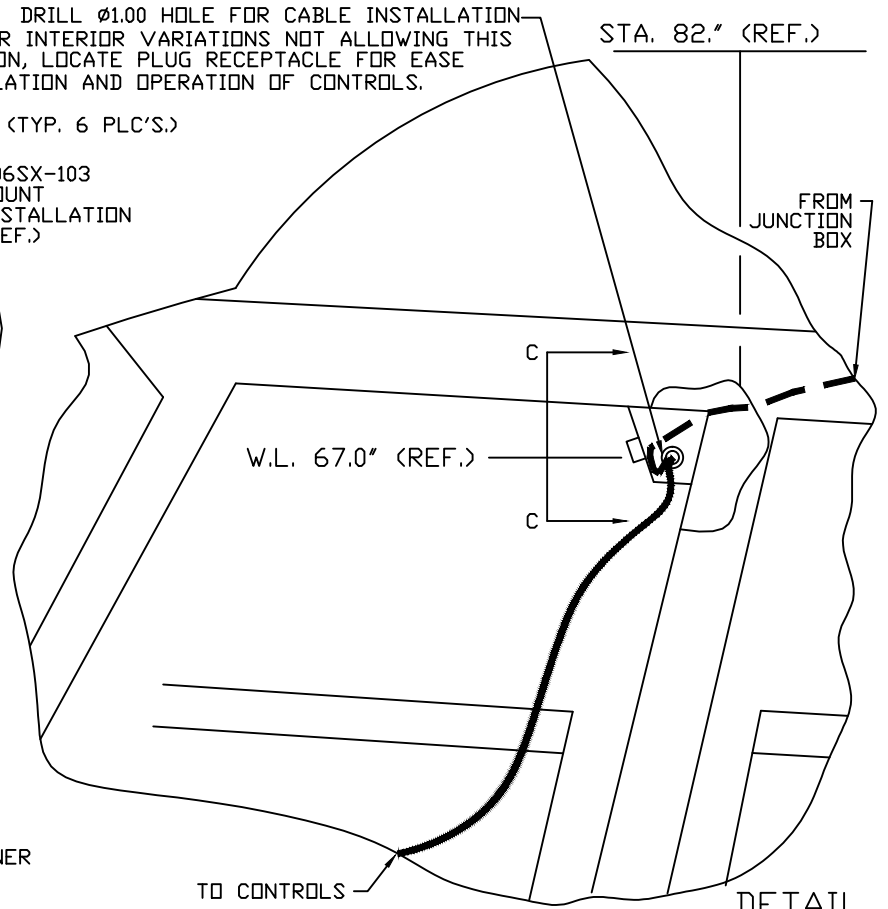
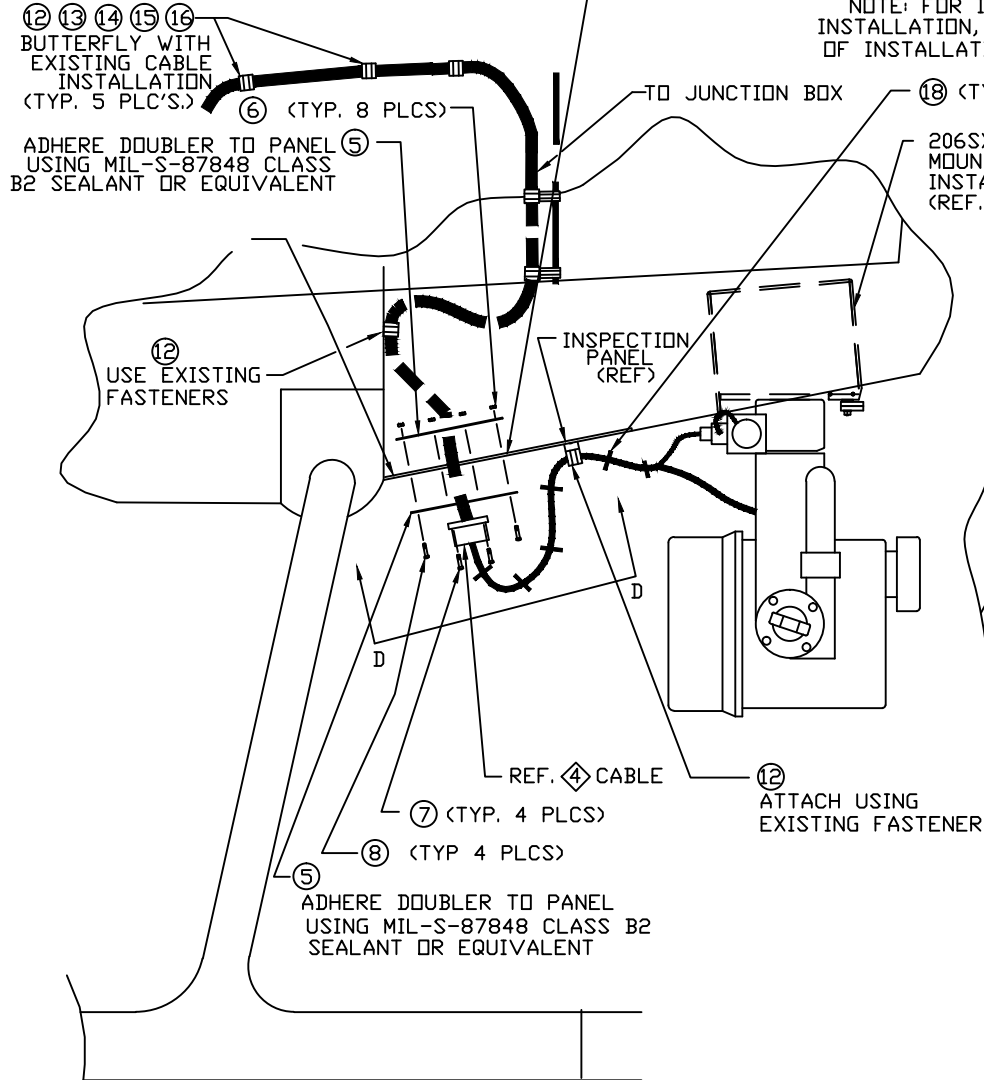
**DO NOT SCALE DRAWING**

© 2008 PARAVION TECH., INC. PARAVION IS A TRADEMARK OF PARAVION TECHNOLOGY, INC.

**SHEET**  
1 OF 4

LOCATE DOUBLER TO AVOID EXISTING INSTALLATIONS AND ASSURE CABLE LENGTH FOR GIMBAL ROTATION. (REF) F.S. 161", R.B.L. 2.75"  
 MATCH DRILL  $\varnothing 0.750$  (TYP. 1 PLC) AND  $\varnothing 0.141$  (TYP. 8 PLCS) TO DOUBLER

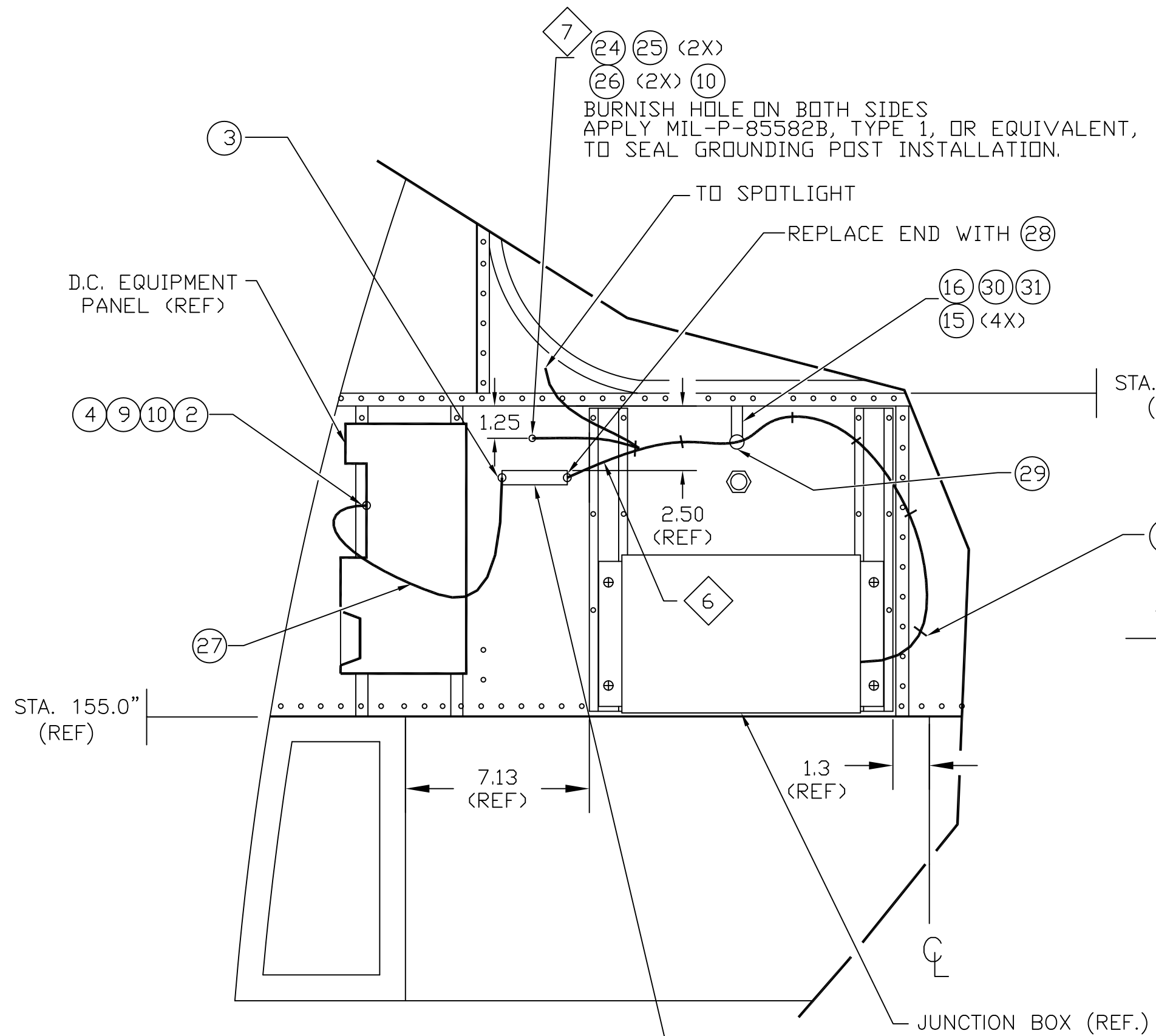
DRILL  $\varnothing 1.00$  HOLE FOR CABLE INSTALLATION  
 NOTE: FOR INTERIOR VARIATIONS NOT ALLOWING THIS INSTALLATION, LOCATE PLUG RECEPTACLE FOR EASE OF INSTALLATION AND OPERATION OF CONTROLS.



DETAIL B

DETAIL A

<b>Paravion® Inc.</b> ✓ Technology		TITLE ELECTRICAL INSTALLATION			DRAWING NO. 407SX-303	
DIMENSIONS IN INCHES						
TOLERANCES EXCEPT WHERE NOTED:						
DRAWN BY		APRVD BY	CHK'D BY	DATE	REV	ECO
RHSM		REB	LS	12/05/97	N/C	1
DO NOT SCALE DRAWING						SHEET
© 1997 PARAVION TECH., INC. PARAVION IS A TRADEMARK OF PARAVION TECHNOLOGY, INC.						2 OF 4
ANGLES = ± 1°						



(24) (25) (2X)  
 (26) (2X) (10)  
 BURNISH HOLE ON BOTH SIDES  
 APPLY MIL-P-85582B, TYPE 1, OR EQUIVALENT,  
 TO SEAL GROUNDING POST INSTALLATION.

STA. 167.33" (REF)

STA. 155.0" (REF)

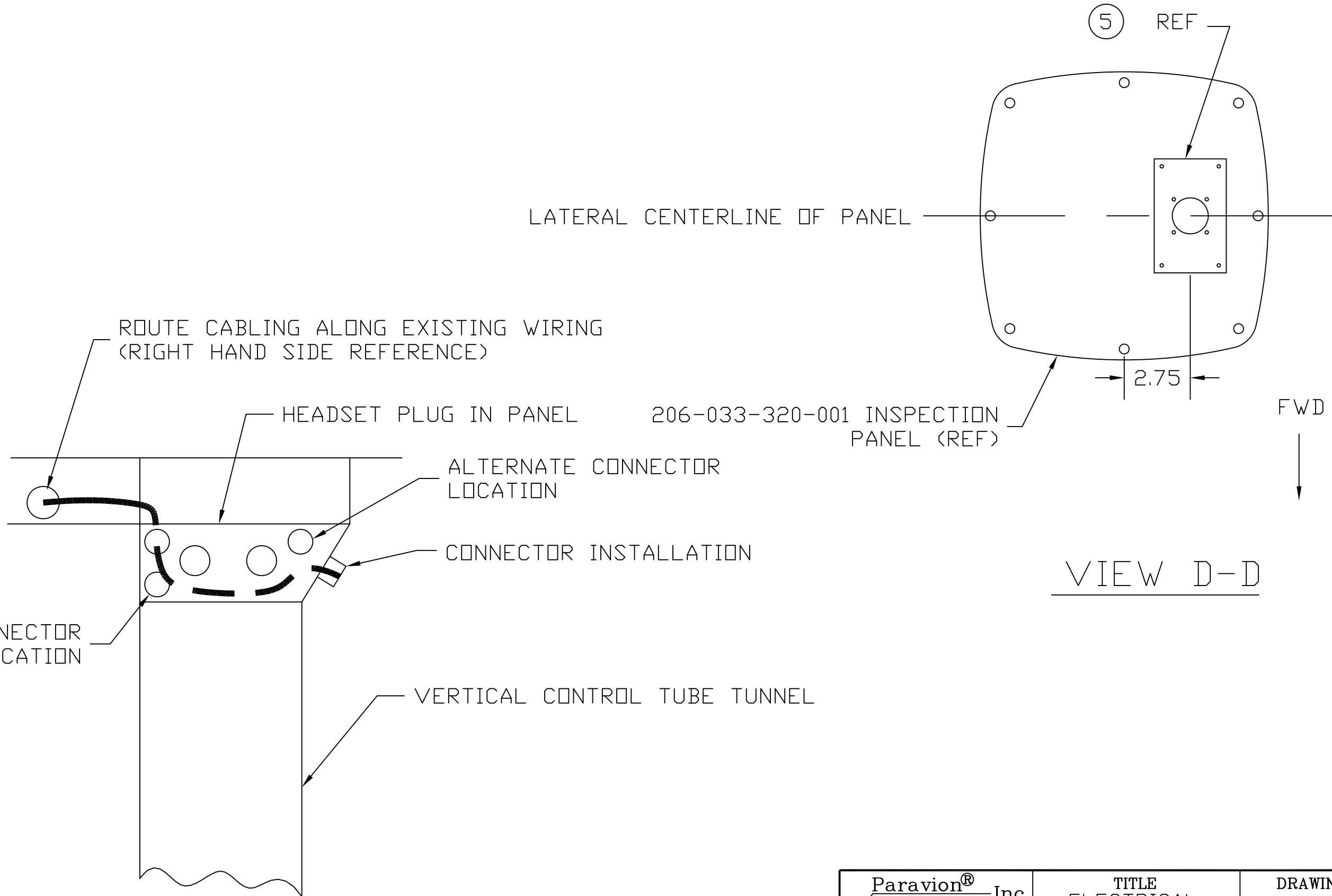
(18) (TYP. 6 PLC'S.)

-1/-2 INSTALLATION

JUNCTION BOX (REF.)

(19) (16) (2X) (21) (2X)  
 (22) (2X) (23) (2X)  
 (15) (20)

<b>Paravion® Inc.</b> Technology		<b>TITLE</b> ELECTRICAL INSTALLATION			<b>DRAWING NO.</b> 407SX-303	
<b>DIMENSIONS IN INCHES</b>						
<b>TOLERANCES EXCEPT WHERE NOTED:</b>						
.X = ± .1 .XX = ± .05 .XXX = ± .010  ANGLES = ± 1°						
<b>DRAWN BY</b> RHSM	<b>APRVD. BY</b> REB	<b>CHK'D BY</b> LS	<b>DATE</b> 12/05/97	<b>REV</b> N/C	<b>ECO</b> 1	
<b>DO NOT SCALE DRAWING</b>				<b>SHEET</b> 4 OF 4		
© 1997 PARAVION TECH, INC. PARAVION IS A TRADEMARK OF PARAVION TECHNOLOGY, INC.						



<b>Paravion® Inc.</b> Technology	<b>TITLE</b> ELECTRICAL INSTALLATION				<b>DRAWING NO.</b> 407SX-303	
	DIMENSIONS IN INCHES					
TOLERANCES EXCEPT WHERE NOTED:						
.X = ± .1 .XX = ± .05 .XXX = ± .010 ANGLES = ± 1°						
<b>DRAWN BY</b> RHSM	<b>APRVD. BY</b> REB	<b>CHK'D BY</b> LS	<b>DATE</b> 12/05/97	<b>REV</b> N/C	<b>ECO</b> 1	
<b>DO NOT SCALE DRAWING</b>				<b>SHEET</b> 3 OF 4		
© 1997 PARAVION TECH., INC. PARAVION IS A TRADEMARK OF PARAVION TECHNOLOGY, INC.						



# Bill of Materials

\*407SX-303-1, REV. N/C ECO3

ITEM #	P/N	DESCRIPTION	QTY	TYP
0	*407SX-303-1, REV. N/C ECO3	ELECTRICAL INST'N	1	KIT
1	MS35489-19	GROMMET	1	EA.
2	MS25036-126	TERMINAL	1	EA.
3	MS25036-127	TERMINAL (ALT: 324112)	1	EA.
4	AN4-5A	BOLT	1	EA.
5	206SX-3035-1	DOUBLER	2	EA.
6	AN364-632	NUT	8	EA.
7	MS35206-232	SCREW	4	EA.
8	MS35206-231	SCREW	4	EA.
9	407SX-3100-1	BUSS BAR	1	EA.
10	MS21042L4	NUT	2	EA.
11	CAM-6275-11	PLACARD	1	EA.
12	MS21919WDG12	CLAMP	8	EA.
13	MS21919WDG8	CLAMP	5	EA.
14	MS35207-264	SCREW	5	EA.
15	NAS1149F0332P	WASHER	10	EA.
16	MS21042L3	NUT	8	EA.
17	MS21919WDG5	CLAMP	4	EA.
18	CT6B	TYRAP	12	EA.
19	ANL-80	FUSE (Cooper-Bussman)	1	EA.
20	ES58181-1	FUSE HOLDER (Cooper-Bussman)	1	EA.
21	MS24694-S54	SCREWS	2	EA.
22	AN970-3	WASHER	2	EA.
23	MS25171-2S	RUBBER BOOT	2	EA.
24	MS35207-282	SCREW	1	EA.
25	AN970-4	WASHER	2	EA.
26	MS35338-44	LOCK WASHER	2	EA.

# Bill of Materials

\*407SX-303-1, REV. N/C ECO3

ITEM #	P/N	DESCRIPTION	QTY	TYP
27	MIL-W-22759/16-2	AWG 2 WIRE	24	IN
28	MS25036-121	TERMINAL	1	EA.
29	MS21919WDG10	CLAMP	1	EA
30	NAS43DD3-62	SPACER	1	EA.
31	MS35207-271	SCREW	1	EA.

---

# Bill of Materials

\*407SX-303-2, REV. N/C ECO3

ITEM #	P/N	DESCRIPTION	QTY	TYP
0	*407SX-303-2, REV. N/C ECO3	ELECTRICAL INST'N	1	KIT
1	MS35489-19	GROMMET	1	EA.
2	MS25036-126	TERMINAL	1	EA.
3	MS25036-127	TERMINAL (ALT: 324112)	1	EA.
4	AN4-5A	BOLT	1	EA.
5	206SX-3035-1	DOUBLER	2	EA.
6	AN364-632	NUT	8	EA.
7	MS35206-232	SCREW	4	EA.
8	MS35206-231	SCREW	4	EA.
9	407SX-3100-1	BUSS BAR	1	EA.
10	MS21042L4	NUT	2	EA.
11	CAM-6275-11	PLACARD	1	EA.
12	MS21919WDG12	CLAMP	8	EA.
13	MS21919WDG8	CLAMP	5	EA.
14	MS35207-264	SCREW	5	EA.
15	NAS1149F0332P	WASHER	10	EA.
16	MS21042L3	NUT	8	EA.
17	MS21919WDG5	CLAMP	4	EA.
18	CT6B	TYRAP	12	EA.
19	ANL-80	FUSE (Cooper-Bussman)	1	EA.
20	ES58181-1	FUSE HOLDER (Cooper-Bussman)	1	EA.
21	MS24694-S54	SCREWS	2	EA.
22	AN970-3	WASHER	2	EA.
23	MS25171-2S	RUBBER BOOT	2	EA.
24	MS35207-282	SCREW	1	EA.
25	AN970-4	WASHER	2	EA.
26	MS35338-44	LOCK WASHER	2	EA.

# Bill of Materials

\*407SX-303-2, REV. N/C ECO3

ITEM #	P/N	DESCRIPTION	QTY	TYP
27	MIL-W-22759/16-2	AWG 2 WIRE	24	IN
28	MS25036-121	TERMINAL	1	EA.
29	MS21919WDG10	CLAMP	1	EA
30	NAS43DD3-62	SPACER	1	EA.
31	MS35207-271	SCREW	1	EA.

---