

ENGINE COUPLING SHAFT LUBRICATION KIT

INTRODUCTION

THIS ENGINE COUPLING SHAFT LUBRICATION KIT IS APPROVED FOR INSTALLATION ON THE ENGINE LOWER COUPLING DRIVE ASSEMBLY OF SCHWEIZER 269A, 269A-1, 269B, 269C, AND 269C-1. THE PURPOSE OF THIS INSTALLATION IS TO PERMIT THE USE OF A HAND OPERATED GREASE GUN TO ASSURE SUFFICIENT LUBRICATION OF THE COUPLING DURING INTERVALS BETWEEN SCHEDULED COMPLIANCE TO MANUFACTURER'S MAINTENANCE REQUIREMENTS AND/OR SERVICE NOTICES.

INSTALLATION INSTRUCTIONS

FORWARD INSTALLATION

1. INSPECT P/N 269A5473 LOWER COUPLING DRIVE SHAFT BOOT IN ACCORDANCE WITH SCHWEIZER SERVICE INFORMATION NOTICE NO. N-211, OR LATEST APPLICABLE DATA. REPLACE BOOT IF REQUIRED.
2. USE A STANDARD SINGLE-HOLE PAPER PUNCH TO CUT THE REQUIRED HOLE IN THE BOOT.
3. PRELUBRICATE FORWARD AND AFT, SPLINE-COUPLINGS PER BASIC HMI,(SEE SECTION 10).
4. WITH THE GREASE PORT FACING AFT, TOWARD THE PULLEY AND BOOT, PLACE ADAPTER ASSEMBLY AND BOOT OVER THE 269A5411 ENGINE ADAPTER WITH THE ZERK FITTING PROTRUDING THROUGH THE HOLE IN THE BOOT.
5. USING A GREASE GUN ADD APPROVED GREASE TO THE BOOT CAVITY. THE BOOT CAVITY IS FULL WHEN THE BOOT EXPANDS DURING GREASE ADDITION. DO NOT OVERFILL.
6. INSURE THAT THE BOOT IS SECURED TO THE DRIVE SHAFT WITH SPIRAL RING OR 0.042 SAFETY WIRE.

AFT INSTALLATION

7. REPLACE 269A5419 PLUG WITH CAP ASSEMBLY. RE-INSTALL 269A5416 WASHER AND 269A5415 NUT IN ACCORDANCE WITH SCHWEIZER HMI.
8. USE A GREASE GUN TO ADD A SMALL AMOUNT OF APPROVED GREASE TO THE SPLINE-COUPLING CAVITY.

PLACARD INSTALLATION

9. LOCATE PLACARD IN A CONSPICUOUS 2 INCH X 5.25 INCH AREA ON SCROLL ASSEMBLY.
10. INSTALL PLACARD USING INDICATED RIVETS.

WEIGHT AND BALANCE DATA

WEIGHT AND BALANCE NOT AFFECTED.

MAINTENANCE INSTRUCTIONS

PREFLIGHT INSPECTION OF THE FORWARD SPLINE-COUPLING BOOT AND SHORT DRIVE SHAFT IS REQUIRED IN ACCORDANCE WITH MANUFACTURER'S INSTRUCTIONS.

EACH 10 HOUR FLIGHT-TIME INTERVAL, OR AS NEEDED.

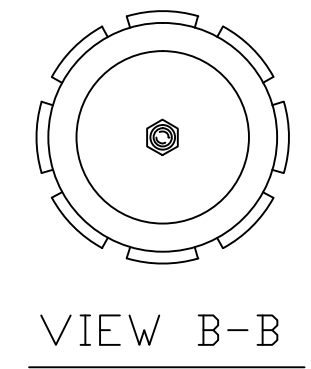
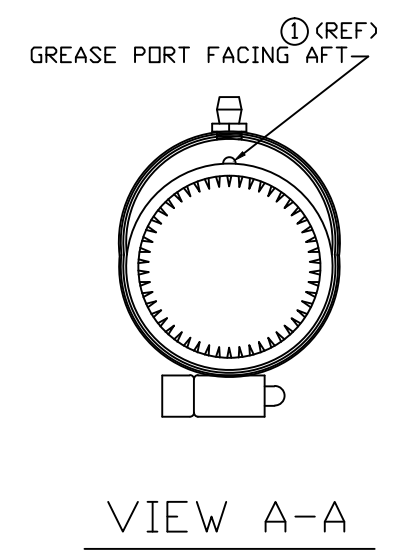
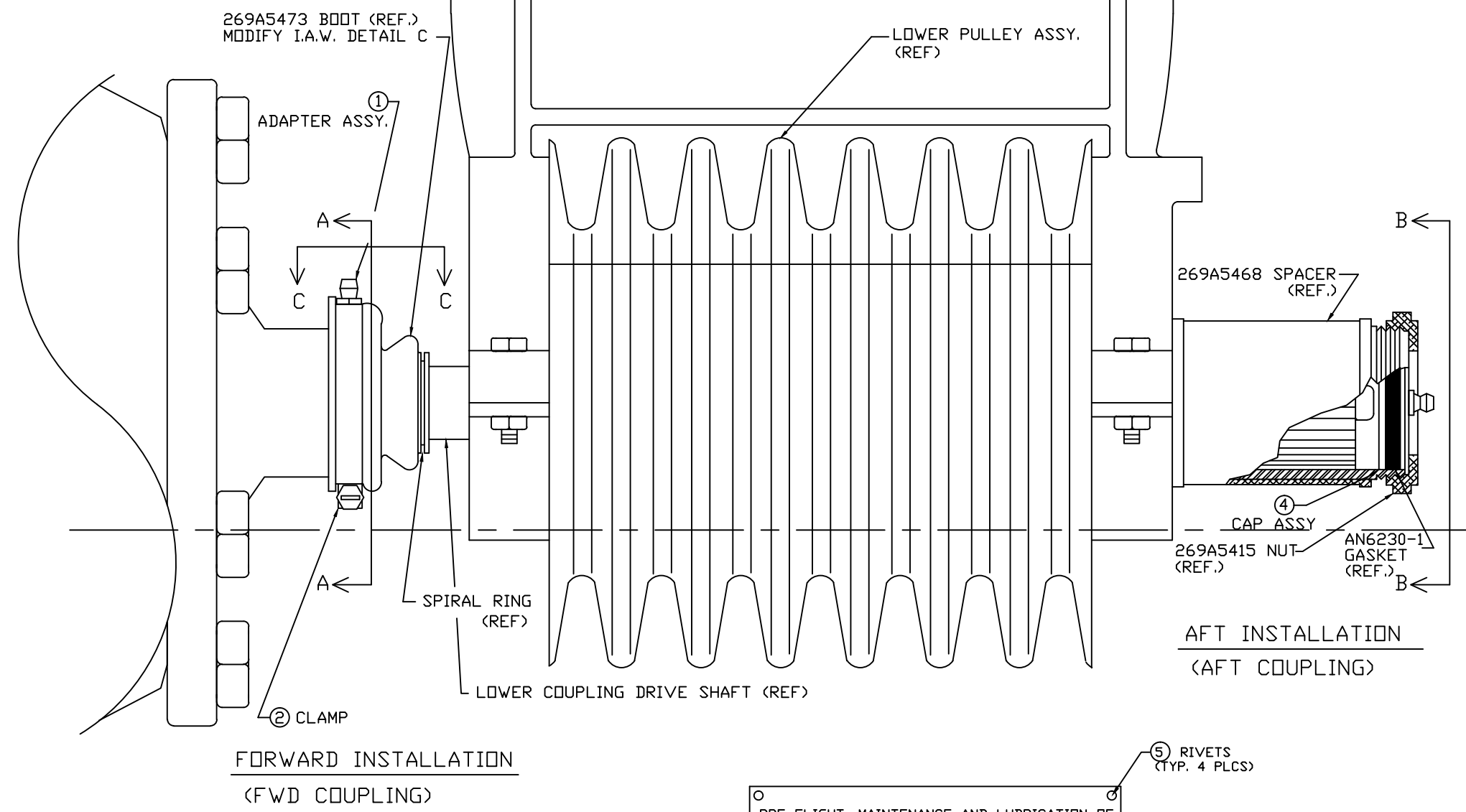
USING A HAND-OPERATED GREASE GUN, ADD GREASE TO THE FORWARD SPLINE-COUPLING UNTIL A SLIGHT BOOT EXPANSION IS OBSERVED. DO NOT FORCE CONTINUED BOOT EXPANSION. ADD A SMALL AMOUNT OF GREASE TO THE AFT SPLINE-COUPLING AT THE ZERK FITTING. SUFFICIENT GREASE IN THE AFT SPLINE-COUPLING CAN BE JUDGED BY THE PRESENCE OF A SLIGHT BACK-PRESSURE ON THE GUN. DO NOT OVER GREASE.

SHEET	REV	ECO	DATE	DESCRIPTION	APR	CHK
1,2	A		04/21/93	REWROTE INSTALL. INSTRUCTIONS, ADDED 269GF-1020-1 PLACARD	REB	REB
1	B		09/11/95	ADDED MODEL 269C-1	REB	REB
		1	09/19/00	UPDATED DWG FORMAT, NO PRODUCT CHG.	MR	
		2	08/11/09	ADDED ITEM 5 RIVET P/N TO BOM		

-CONFIDENTIAL INFORMATION-
THE INFORMATION AND DATA CONTAINED HEREIN IS PROPRIETARY AND IS SUBMITTED IN CONFIDENCE; AND SHALL NOT BE DISCLOSED, USED OR DUPLICATED FOR ANY PURPOSE WHATSOEVER WITHOUT THE PRIOR WRITTEN PERMISSION OF PARAVION TECHNOLOGY, INC.

PROTO
N/C

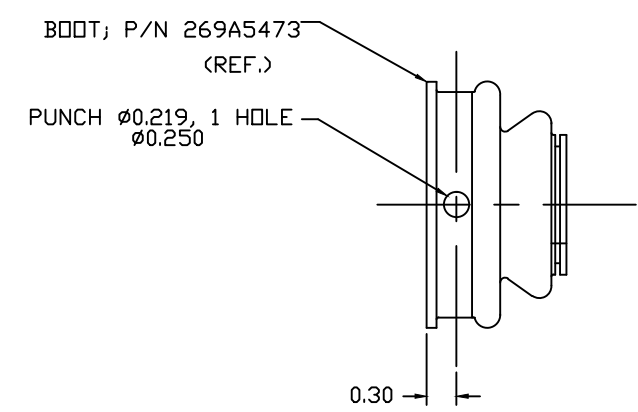
Paravion [®] Technology Inc.		TITLE ENGINE COUPLING SHAFT LUBRICATION KIT		DRAWING NO. 269GF-100	
DIMENSIONS IN INCHES		DRAWN BY	APRVD. BY	CHK'D BY	DATE
TOLERANCES EXCEPT WHERE NOTED:		RHSM	REB	REB	08/26/92
		ECO			09/19/00
DO NOT SCALE DRAWING					REV B
					ECO 2
© 2000 PARAVION TECH., INC. PARAVION IS A TRADEMARK OF PARAVION TECHNOLOGY, INC.					SHEET 1 OF 2
ANGLES = ± 1°					



⑤ RIVETS (TYP. 4 PLCS)

○ PRE-FLIGHT, MAINTENANCE AND LUBRICATION OF ENGINE COUPLING SHAFT TO BE CONDUCTED IN ACCORDANCE WITH MANUFACTURER INSTRUCTIONS
 IN ADDITION EACH 10 HOURS OR AS NEEDED:
 ADD GREASE TO DRIVE-COUPLING BOOT TO VISUAL EXPANSION
 ADD ONE GREASE-GUN PUMP OF GREASE TO AFT PLUG

③ PLACARD
 INSTALL IN CONSPICUOUS LOCATION ON SCROLL ASSEMBLY



VIEW C-C
 ONLY BOOT IS SHOWN FOR MODIFICATION

ENGINE COUPLING SHAFT LUBRICATION KIT
 -1 INSTALLATION

-CONFIDENTIAL INFORMATION-
 THE INFORMATION AND DATA CONTAINED HEREIN IS PROPRIETARY AND IS SUBMITTED IN CONFIDENCE; AND SHALL NOT BE DISCLOSED, USED OR DUPLICATED FOR ANY PURPOSE WHATSOEVER WITHOUT THE PRIOR WRITTEN PERMISSION OF PARAVION TECHNOLOGY, INC.

PROTO
 N/C

Paravion® Inc. Technology		TITLE ENGINE COUPLING SHAFT LUBRICATION KIT		DRAWING NO. 269GF-100	
DIMENSIONS IN INCHES					
TOLERANCES EXCEPT WHERE NOTED:					
.X = $\pm .1$.XX = $\pm .05$.XXX = $\pm .010$		DRAWN BY RHSM	APRVD. BY REB	CHK'D BY REB	DATE 08/26/92 09/19/00
ANGLES = $\pm 1^\circ$		ECO			REV B ECO 1
DO NOT SCALE DRAWING					SHEET 2 OF 2
© 2000 PARAVION TECH., INC. PARAVION IS A TRADEMARK OF PARAVION TECHNOLOGY, INC.					