

PR-407SP-120M
Rev. 2, 12/23/05

PARAVION TECHNOLOGY, INC.
2001 AIRWAY AVENUE
FT. COLLINS, COLORADO 80524

INSTRUCTIONS FOR CONTINUED AIRWORTHINESS
407SP-100 SNOW PAD INSTALLATION

BELL MODEL 407 HELICOPTER

Cover
PR-407SP-120M
Rev. 2, 12/23/05

Paravion®
✓Technology Inc.

THIS PAGE INTENTIONALLY LEFT BLANK

RECORD OF REVISIONS

REVISION NO.	ISSUE DATE	DATE INSERTED	BY
ORIGINAL	12/03/97		
1	01/23/01		
2	01/09/06		

REVISION CONTROL PROCEDURE

Revisions to this document are mailed to owner of record. Before inserting a change, ensure this manual is correct. Check the existing List of Effective Pages in this manual to ensure that all prior revisions are inserted. **Do not insert this revision if prior revisions are not inserted.**

THIS PAGE INTENTIONALLY LEFT BLANK

LIST OF EFFECTIVE PAGES

PAGE NO.	REVISION	DATE
COVER	2	12/23/05
COVER (BLANK)	2	12/23/05
A	2	12/23/05
B (BLANK)	2	12/23/05
i	2	12/23/05
ii	2	12/23/05
1	2	12/23/05
2	2	12/23/05
3	2	12/23/05
4	2	12/23/05
5	2	12/23/05
6	2	12/23/05
7	2	12/23/05

These Instructions for Continued Airworthiness (ICA) except for the Airworthiness Limitations Section, have been reviewed and found to comply with the applicable requirements of Appendix A to the Federal Aviation Regulations Part 27.

FAA Acceptance Manuel Perez Date 02/01/01.
 Fort Worth Aircraft Evaluation Group

TABLE OF CONTENTS

<u>ITEM</u>	<u>PAGE</u>
RECORD OF REVISIONS	A
LIST OF EFFECTIVE PAGES	i
TABLE OF CONTENTS	ii
AIRWORTHINESS LIMITATIONS	1
1.0 SYSTEM DESCRIPTION	2
2.0 INSPECTION AND MAINTENANCE	2
3.0 COMPONENT REMOVAL AND REPLACEMENT	2
 <u>LIST OF FIGURES</u>	
1 SNOW PAD ASSEMBLY	4
2 SKID TUBE BUSHINGS INSTALLATION	6
 <u>LIST OF TABLES</u>	
I ANNUAL/300 HOUR INSPECTION CHECKLIST	7

AIRWORTHINESS LIMITATIONS

The Airworthiness Limitations Section is FAA approved and specifies inspections and other maintenance required under §§ 43.16 and 91.403 of the Federal Aviation Regulations unless an alternative program has been FAA approved.

No airworthiness limitation associated with this type design change.

This system has no life-limited components.

REVISION	DATE	APPROVED
Original	01/29/98	R. Caldwell
1	02/07/01	Melissa Sandow
2	01/03/06	David Grossman

1.0 SYSTEM DESCRIPTION

The 407SP-100 Installation consists of permanently installed bolt/bushing assemblies in the aircraft's skid tubes, and one each Left and Right Snow Pad Assembly to be installed around the aft cross tube above the left and the right skid tube. The slotted brackets bolted to the bottom of the pads are slipped over the bushings when the Snow Pads are installed. The arm assembly, at the forward end of the Snow Pad, has a Quick Release Pin to lock the Snow Pad on the skid tube.

2.0 INSPECTION AND MAINTENANCE

- 2.1 It is the objective of inspection and maintenance to assure that the Snow Pad Panel Assemblies have not been damaged, and that the bushings installation in the skid tubes are solid. All loose and/or replaced fasteners should be torqued reference standard torque recommendations contained in AC43.13-1 as revised.
- 2.2 The Snow Pads should be removed from the aircraft to conduct qualitative inspection of the pad assemblies, and of the skid tube components installation, reference TABLE I. When the Snow Pads are re-installed to the aircraft, the installation of the Quick Release Pin in the Arm Assembly will position the forward support bushings into the bottom of the notch in the forward support brackets. Small adjustments to compensate for wear of Arm Assembly pad thickness is accomplished by removal of washers under the Arm Assembly support brackets(Ref. Items 8, 9, and 22 in Figure 1).

3.0 COMPONENT REMOVAL AND REPLACEMENT

- 3.1 Refer to Figure 1 for components attached to the Snow Pad Panel. To disassemble for inspection or repair, remove the fasteners from the component installation. When replacing or reinstalling components, refer to the figure to assure proper placement and fastener stack-up. Refer to AC43.13-1 as revised for fasteners torque.
- 3.2 Refer to Figure 2 for Skid Tube components installation. If a doubler is replaced, it is permissible to use oversize rivets if needed. Remove and replace components of the thru-bolt stack-up if components are visibly damaged.

**FIGURES
&
INSPECTION CHECKLIST**

NOTE: SEAL ALL ANGLES, BRACKETS, AND FASTENERS TO PANEL USING MIL-S-8802F CLASS B2 SEALANT OR EQUIVALENT SEALANT.
 FINISHED WEIGHT: 17.2 LBS

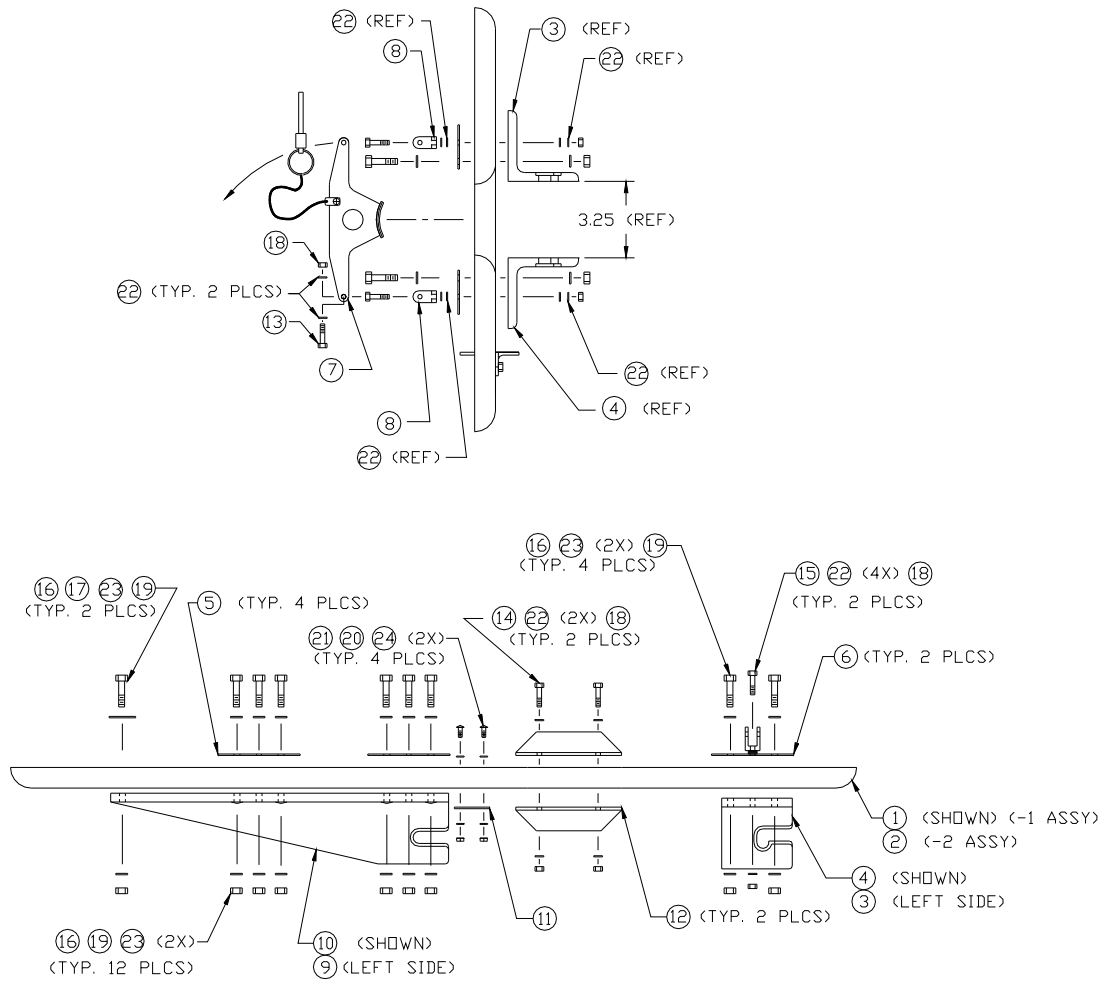
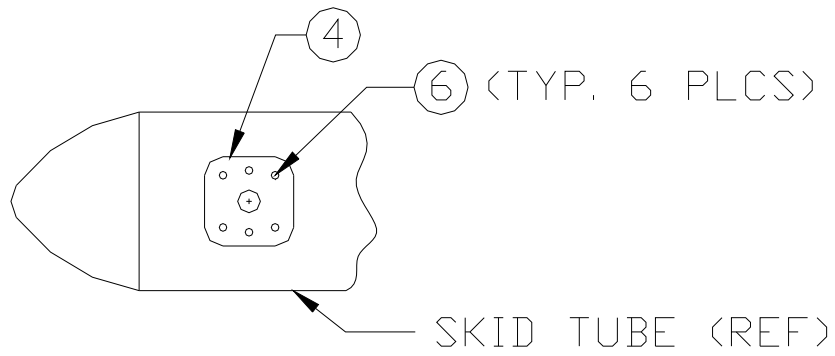


Figure 1: Snow Pad Assembly

Parts List for Figure 1, Snow Pad Assembly

ITEM NO	PN	DESCRIPTION	QTY	TYP
1	206SP-2000-1	PANEL	1	EA
2	206SP-2000-2	PANEL	1	EA
3	206SP-2200-1	BRACKET	1	EA
4	206SP-2200-2	BRACKET	1	EA
5	206SP-2250-1	DOUBLER	4	EA
6	206SP-2250-2	DOUBLER	2	EA
7	206SP-2400-1	ARM ASSEMBLY	1	EA
8	350CM-2900-2	BRACKET	1	EA
9	407SP-2100-1	BRACKET	1	EA
10	407SP-2100-2	BRACKET	1	EA
11	407SP-2150-1	PAD	1	EA
12	407SP-2600-1	ANGLE	2	EA
13	AN3-10A	BOLT	1	EA
14	AN3-11A	BOLT	2	EA
15	AN3-14A	BOLT	2	EA
16	AN4-12A	BOLT	18	EA
17	AN970-4	WASHER	2	EA
18	MS21042L3	NUT	5	EA
19	MS21042L4	NUT	18	EA
20	MS21042L06	NUT	4	EA
21	MS35206-232	SCREW	4	EA
22	NAS1149F0363P	WASHER	14	EA
23	NAS1149F0463P	WASHER	34	EA
24	NAS1149FN616P	WASHER	8	EA



DOUBLER INSTALLATION
(TYP. 8 PLCS)

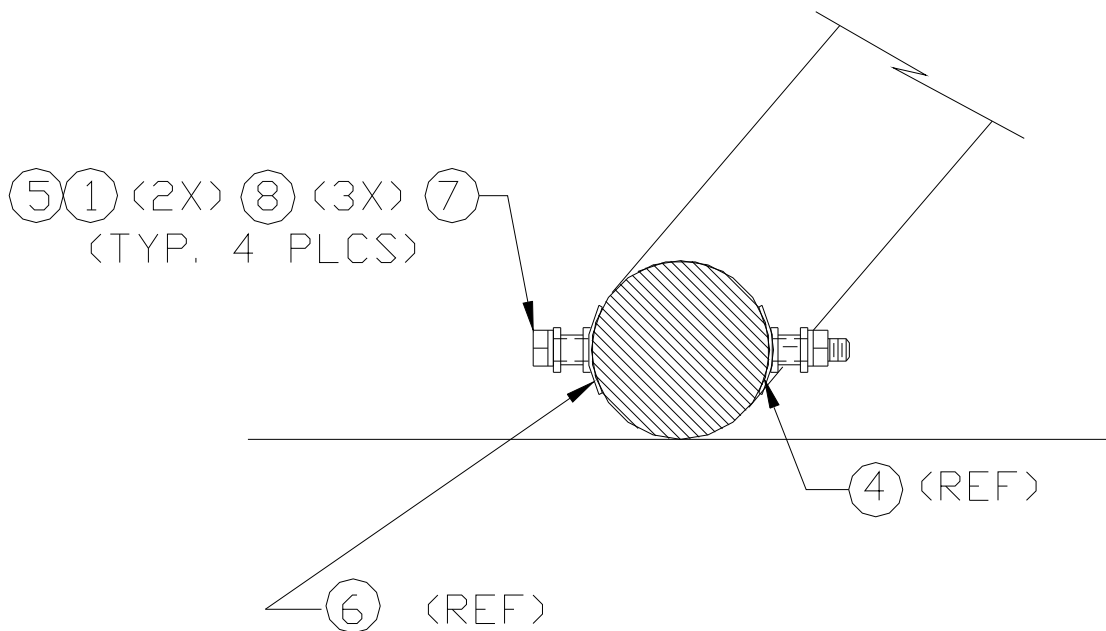


Figure 2: Skid Tube Bushings Installation

Parts List for Figure 2, Skid Tube Bushings Installation

ITEM NO	PN	DESCRIPTION	QTY	TYP
1	206SP-2500-1	BUSHING	8	EA.
4	407SP-2510-1	DOUBLER	8	EA.
5	AN6-46A	BOLT	4	EA.
6	CR3523-4-4	RIVET	48	EA.
7	MS21042L6	NUT	4	EA.
8	NAS1149F0663P	WASHER	16	EA.

TABLE I

ANNUAL/300HR INSPECTION CHECKLIST

INSPECTION	COMMENTS	INITIALS
SNOW PAD PANELS: Inspect for delamination, replace when any delamination area greater than 2.0 sq. inches is found. Repair damaged edges in accordance with appropriate sections of AC43.13.		
SKID TUBE DOUBLERS: Inspect for security of rivets and installed bushings. Look for signs of doubler/bushing movement. Replace bushing installation components as necessary.		
SNOW PAD BRACKETS: Inspect for wear of slots. Replace bracket if slot width exceeds 0.558 inch at any point.		
Report structural discrepancies to Paravion Technology, Inc. Replacement parts are available.		