

PR-427BF-120M
Revision 1, 05/24/06

**PARAVION TECHNOLOGY, INC.
2001 AIRWAY AVENUE
FT. COLLINS, COLORADO 80524**

**INSTRUCTIONS FOR CONTINUED AIRWORTHINESS
427BF-100 MOUNT INSTALLATION**

BELL 427 HELICOPTERS

Cover
PR-427BF-120M
Original, 05/06/02

Paravion[®]
✓Technology Inc.

THIS PAGE INTENTIONALLY LEFT BLANK

RECORD OF REVISIONS

REVISION NO.	ISSUE DATE	DATE INSERTED	BY
ORIGINAL	05/06/02		
1	05/24/06		

REVISION CONTROL PROCEDURE

Revisions to this document are mailed to owner of record. Before inserting a change, ensure this manual is correct. Check the existing List of Effective Pages in this manual to ensure that all prior revisions are inserted. **Do not insert this revision if prior revisions are not inserted.**

Page B
PR-427BF-120M
Original, 05/06/02

Paravion®
✓Technology Inc.

THIS PAGE INTENTIONALLY LEFT BLANK

LIST OF EFFECTIVE PAGES

PAGE NO.	REVISION	DATE
COVER	1	05/24/06
COVER (BLANK)	0	05/06/02
A	1	05/24/06
B (BLANK)	0	05/06/02
i	1	05/24/06
ii	1	05/24/06
1	1	05/24/06
2	1	05/24/06
3	0	05/06/02
4	1	05/24/06
5	1	05/24/06
6	1	05/24/06
7	1	05/24/06
8	1	05/24/06
9	1	02/27/06
10 (BLANK)	1	05/24/06
A-0	1	05/24/06
A-1 (BLANK)	1	05/24/06
B-0	1	05/24/06

*NOTE: [] Indicates revised text/data.

Revision 1 to this document was accepted by letter;

Manuel Perez
 Fort Worth Aircraft Evaluation Group
 05/26/06

TABLE OF CONTENTS

<u>ITEM</u>	<u>PAGE</u>
RECORD OF REVISIONS	A
LIST OF EFFECTIVE PAGES	i
TABLE OF CONTENTS	ii
AIRWORTHINESS LIMITATIONS	1
1.0 SYSTEM DESCRIPTION	2
2.0 INSPECTION AND MAINTENANCE	2
3.0 COMPONENT REMOVAL AND REPLACEMENT	2

LIST OF TABLES

<u>TABLE</u>		
I	WEIGHT AND BALANCE DATA; 427BF-100 INSTALLATION	3

LIST OF FIGURES

<u>FIGURE</u>		
1	MOUNT CONFIGURATION	5
2	FORWARD MOUNT INSTALLATION	6
3	AFT MOUNT INSTALLATION	8

LIST OF APPENDICES

<u>APPENDIX</u>		
A	STANDARD TORQUE VALUE CHART [REMOVED, REVISION 1]	
[B	ANNUAL/PERIODIC INSPECTION CHECKLIST	B-0

AIRWORTHINESS LIMITATIONS

The Airworthiness Limitations Section is FAA approved and specifies inspections and other maintenance required under §§ 43.16 and 91.403 of the Federal Aviation Regulations unless an alternative program has been FAA approved.

No airworthiness limitation associated with this type design change.

This system has no life-limited components.

1.0 SYSTEM DESCRIPTION

427BF-100 Mount Installation is comprised of the following:

427BF-150 Mount & Clevis Installation
427BF-250 Clevis Installation

The 427BF-150 and 427BF-250 Mount & Clevis Installations are located outside the helicopter, (3) three on the nose and (3) three on the rear stabilizer. This installation is provided for ground handling purposes.

System Weight: 0.5 lbs. (6 locations combined)

2.0 INSPECTION AND MAINTENANCE

It is the objective of this inspection and maintenance procedure to ensure that component installations are secure. Table I should be followed during Annual/Periodic Inspections for system airworthiness. [Torque loose or replaced MS27039-08XX (#8-32 thread) 7-to-9 in.-lb. Torque loose or replaced MS27039-1-XX (#10-32 thread) 12-to-15 in.-lb.]

2.1 Mount & Clevis Installation

- 2.1.1 Inspect all mounts for stress, corrosion, and cracking. Any components with cracks should be removed and sent to Paravion Technology, Inc.
- 2.1.2 Inspect all screwed connections. Replace all worn screws and/or fittings. [Torque loose and/or replaced fasteners and fittings as indicated in para. 2.0.]
- 2.1.3 Inspect and replace all worn self-locking nuts. [Torque loose and/or replaced fasteners and fittings as indicated in para. 2.0.]

3.0 COMPONENT REMOVAL AND REPLACEMENT

NOTE: Adjust aircraft Weight and Balance data (Reference: Table I), when components are removed or installed.

3.1 Clevis & Mounts Removal

- 3.1.1 Loosen and remove the fastening screws from the mounts/clevis.
- 3.1.2 Remove the mounts/clevis.

3.2 Mounts & Clevis Installation

- 3.2.1 Install mounts/clevis. [Torque loose and/or replaced fasteners and fittings as indicated in para. 2.0.]

TABLE I

WEIGHT AND BALANCE DATA; 427BF-100 INSTALLATION					
ITEM	WEIGHT (lb)	427			
		Longitudinal		Lateral	
		F.S. (in)	Moment (in-lb)	B.L. (in)	Moment (in-lb)
Clevis 427BF-2100-1	0.062	432	26.8	-6.7	-0.42
Clevis 427BF-2100-2	0.066	419	27.7	+6.7	0.44
Clevis 427BF-2100-2	0.066	419	27.7	-6.7	-0.44
Clevis 427BF-2100-3	0.085	116.8	9.9	0	0
Mount 427BF-2000-1	0.064	83.70	5.4	3.75	0.24
Mount 427BF-2000-1	0.064	83.70	5.4	-3.75	-0.24
TOTAL	0.407	252.8	102.9	-1.03	-0.42

FIGURES

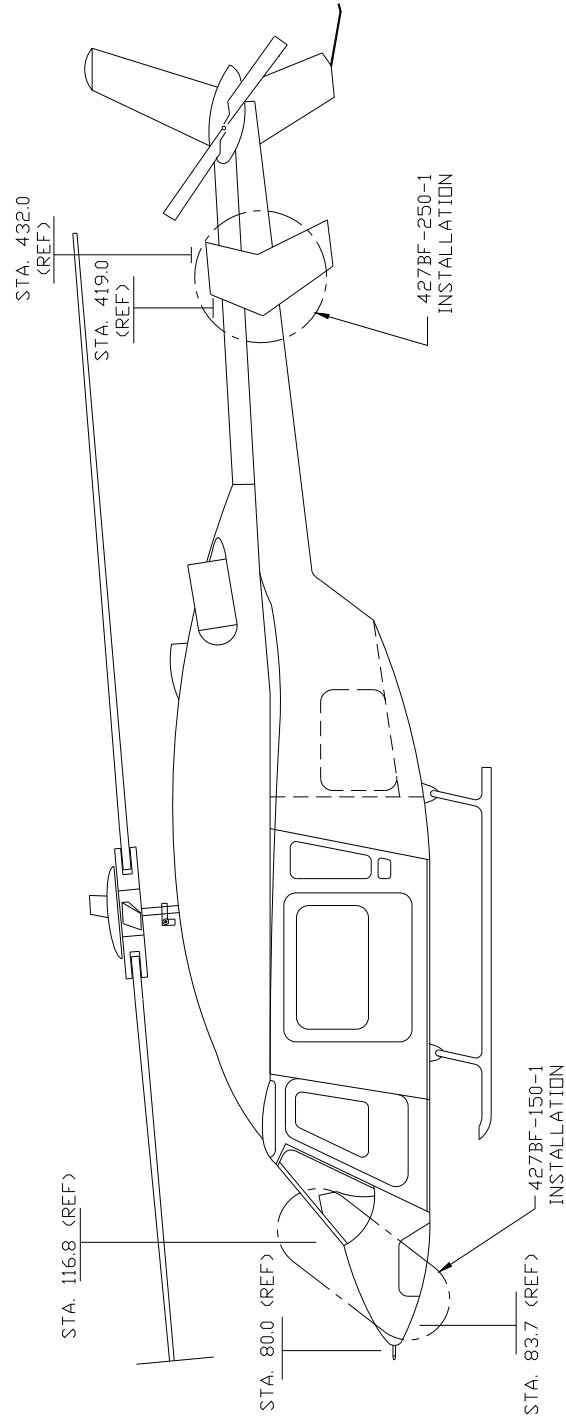


Figure 1: Mount Configuration

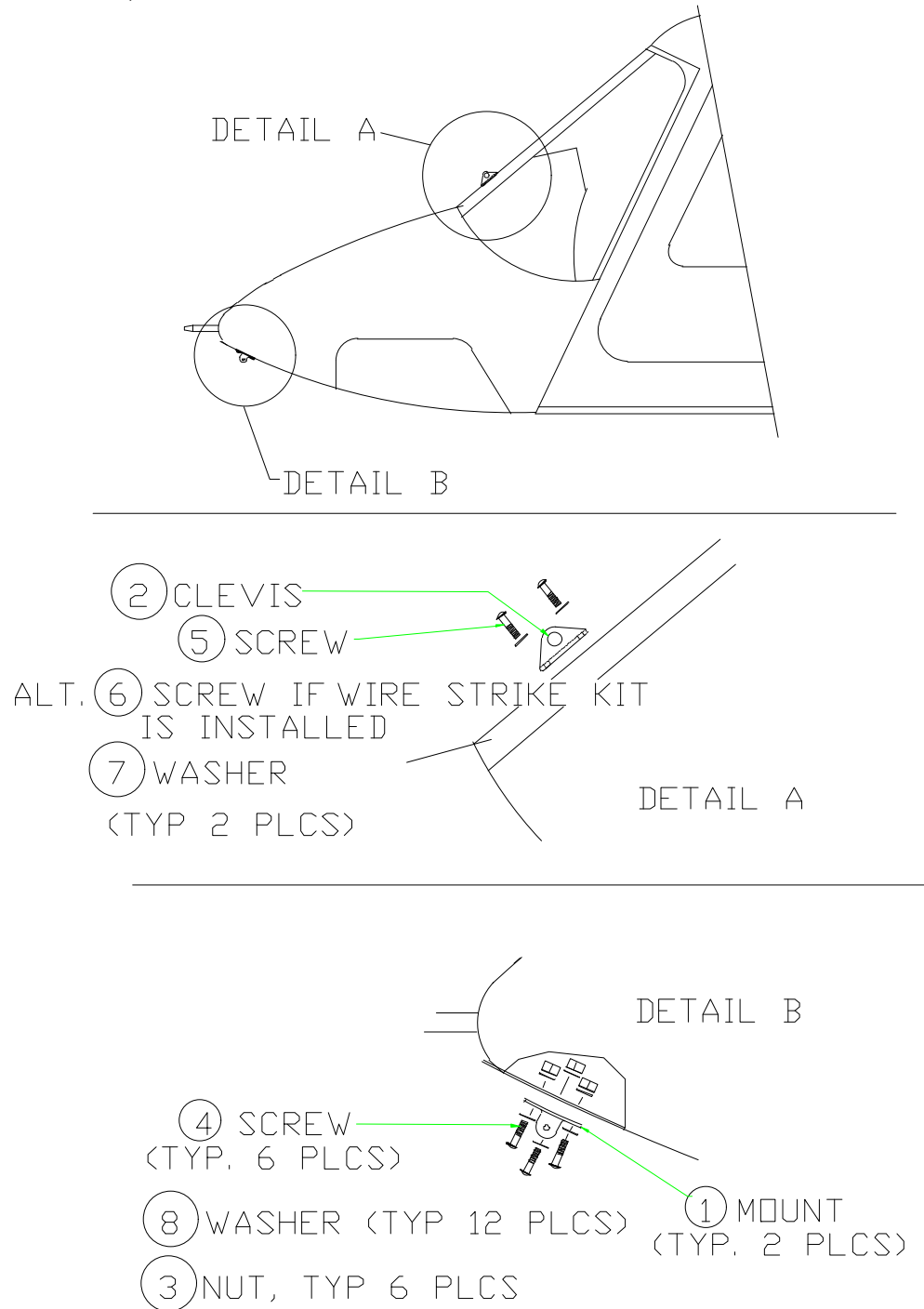


Figure 2: Forward Mount Installation

Parts List
FOR FORWARD MOUNT INSTALLATION
(PAGE 6)

ITEM #	P/N	DESCRIPTION	QTY	TYP
1	427BF-2000-1	MOUNT ASSEMBLY	2	EA
2	427BF-2100-3	CLEVIS ASSEMBLY	1	EA
3	MS21042L3	NUT	6	EA
4	MS27039-1-09	SCREW	6	EA
5	MS27039-0812	SCREW	2	EA
6	MS27039-0813	SCREW	2	EA
7	NAS1149DN816J	WASHER	2	EA
8	NAS1149D0316J	WASHER	12	EA

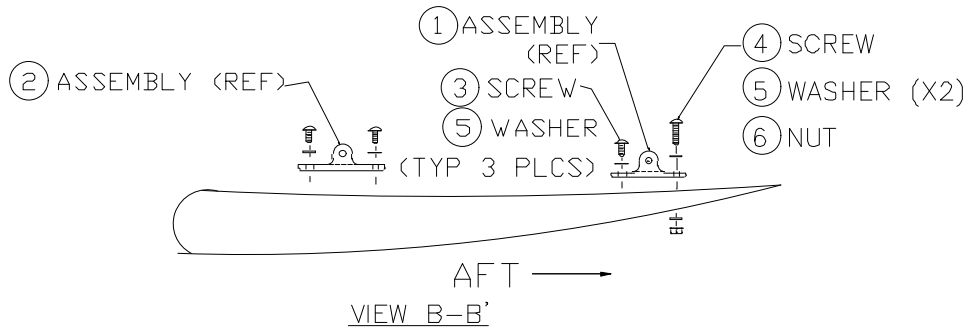
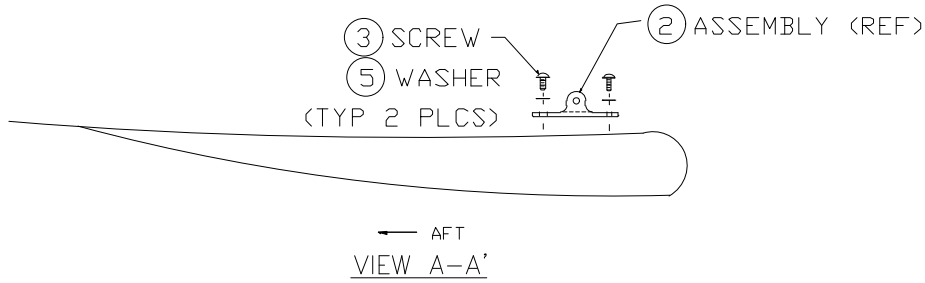
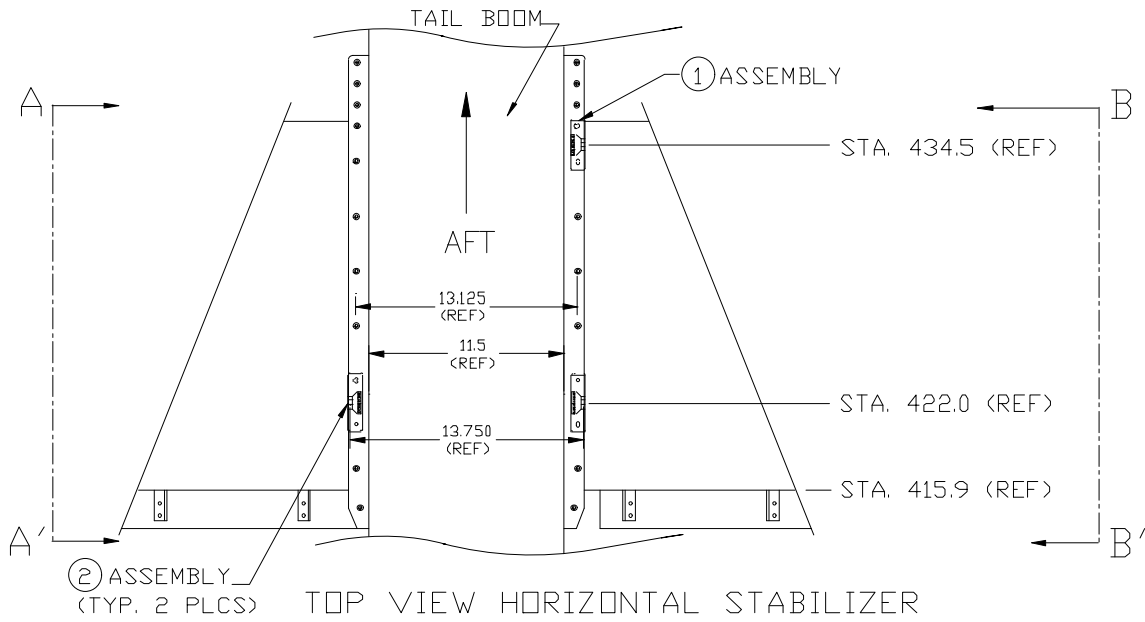


Figure 3: Aft Mount Installation

Parts List
FOR AFT MOUNT INSTALLATION
(PAGE 8)

ITEM #	P/N	DESCRIPTION	QTY	TYP
1	427BF-2100-1	CLEVIS ASSEMBLY	1	EA
2	427BF-2100-2	CLEVIS ASSEMBLY	2	EA
3	MS27039-1-09	SCREW	5	EA
4	MS27039-1-13	SCREW	1	EA
5	NAS1149D0316J	WASHER(NOTE: 7 to 12 washers may be needed)	12	EA
6	MS21042L3	NUT	1	EA

THIS PAGE INTENTIONALLY BLANK

APPENDIX A

**REMOVED
PLEASE REFER TO AC43.13-1
AS REVISED**

FOR STANDARDIZED TORQUE RECOMMENDATIONS

THIS PAGE INTENTIONALLY BLANK

APPENDIX B

ANNUAL/PERIODIC INSPECTION CHECKLIST

INSPECTION	COMMENTS	INITIALS
1. Inspect all mounts for stress, cracks, and corrosion. Replace if necessary.		
2. Inspect aircraft structure at attachment points.		