

SHEET	REV	ECO	DATE	DESCRIPTION	APR	CHK
1	A		09/30/92	ADDED MODEL 206L-4	REB	REB
1	B		05/24/93	ADDED MODEL 206L-4 W/FLOATS	REB	REB
		1	12/17/00	△, △ 206CS-100-9, -101-9 WAS -3	MR	LS

MODEL	EQUIPPED WITH LANDING GEAR TYPE - P/N	USE PARAVION STEP KIT P/N - TYPE
206A 206B	HIGH SKID GEAR 206-706-031-1	206CS-100-1 FIXED STEP △ 206CS-101-1 HINGED STEP △
206A 206B	PAN TYPE FLOATS 206-706-010-21 206-706-010-25	206CS-100-1 FIXED STEP △ 206CS-101-1 HINGED STEP △
206A 206B	LIGHTWEIGHT FLOATS 206-706-211-101 206-706-211-103	206CS-101-1 HINGED STEP △
206L 206L-1 206L-3	HIGH SKID GEAR 206-706-064-3 206-706-064-101	206CS-100-2 FIXED STEP △ 206CS-101-2 HINGED STEP △
206L 206L-1 206L-3	LIGHTWEIGHT FLOATS 206-706-210-101 206-706-210-103 206-706-210-105	206CS-101-2 HINGED STEP △
206L-4	HIGH SKID GEAR 206-706-064-103	206CS-100-2 FIXED STEP △ 206CS-101-2 HINGED STEP △
206L-4	POP OUT FLOATS 206-706-210-109	206CS-101-2 HINGED STEP △

NOTES

△ ADD 206CS-100-9 PARTS IF FUSELAGE FITTINGS WERE NOT PREVIOUSLY INSTALLED.

△ ADD 206CS-101-9 PARTS IF FUSELAGE FITTINGS WERE NOT PREVIOUSLY INSTALLED.

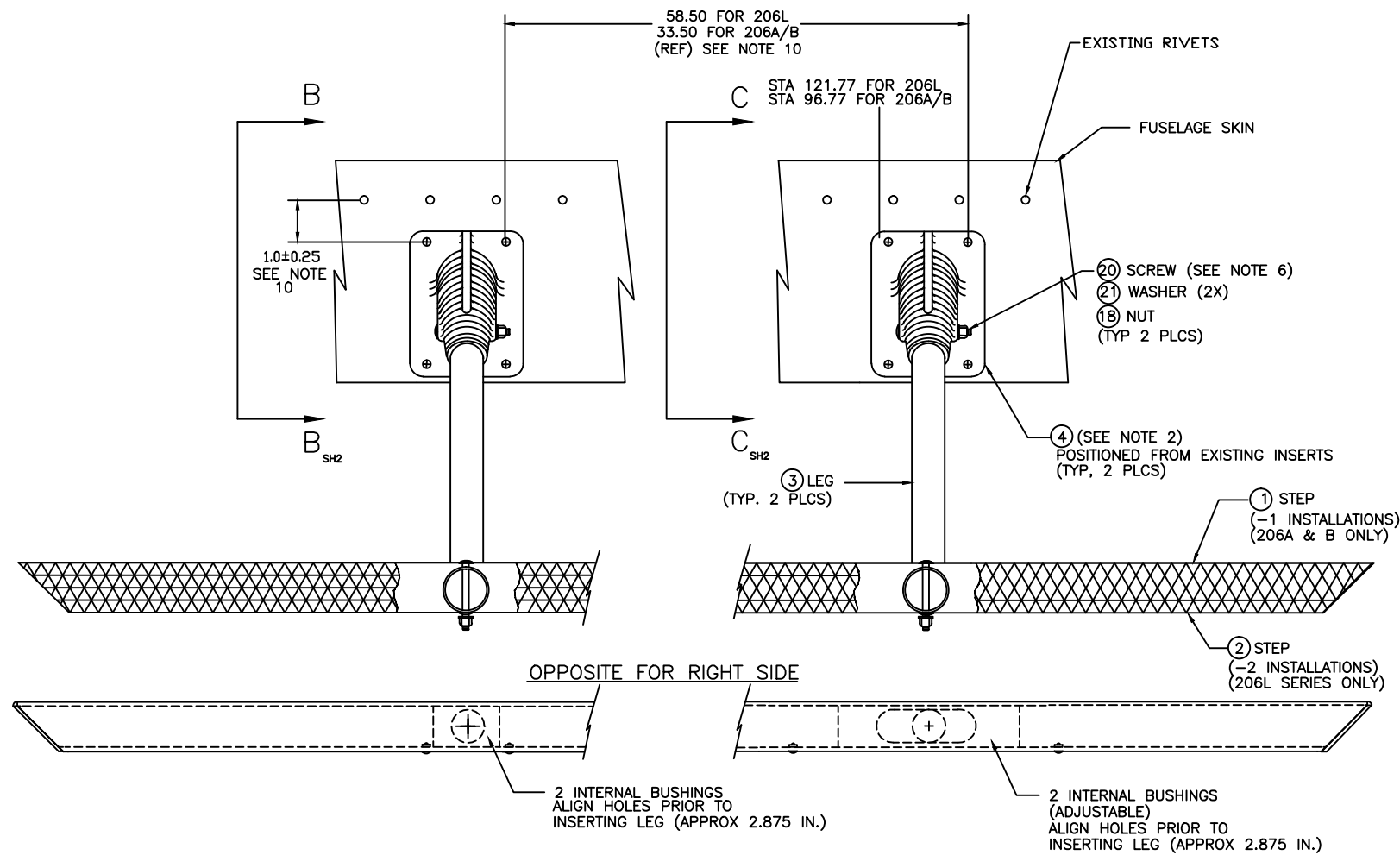
Paravion® Technology Inc.		TITLE			DRAWING NO.	
		CONFIGURATION			206CS-000	
DIMENSIONS IN INCHES		DRAWN BY	APRVD. BY	CHK'D BY	DATE	REV
TOLERANCES EXCEPT WHERE NOTED:		KRG	BR	BR	10/09/89	B
.X = ± .1 .XX = ± .05 .XXX = ± .010		DO NOT SCALE DRAWING				ECO
ANGLES = ± 1°		© 2000 PARAVION TECH., INC. PARAVION IS A TRADEMARK OF PARAVION TECHNOLOGY, INC.				1 OF 1

PROTO
N/C

SHEET	REV	ECO	DATE	DESCRIPTION	APR	CHK
1,2,3,&4	A		03/23/88	CHANGE P/N 206CS-304 TO 206-031 -369; ADDED SHEET 4	NLH	NLH
1,2,3,&4	B		04/04/89	ADD 206CS-304-3 FITTING (ALT) ADD 206CS-306-2, -3, &-4 BRACKET	BR	BR
1&4	C		12/05/90	CR3243-4-4 WAS 4-3; 5-6 WAS 5-5; & ADDED 4-5	BR	BR
1-4		1	01/06/00	RE-DRAWN, UPDATED FORMAT	MR	LS
1-4		2	01/23/00	ADD ONE LONGER SCREW TO ASSY.	MR	LS

NOTES:

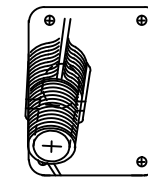
1. COAT FAYING SURFACES OR SEAL EDGES OF EACH 206CS-304-3 FITTING USING MIL-S-8802F CLASS B2 SEALANT OR EQUIVALENT.
2. SOME PARTS MAY NOT BE REQUIRED IF AIRCRAFT HAD PREVIOUSLY INSTALLED STEPS.
3. BOND USING EA934 OR METALSET A4.
4. ASSURE ADHESIVE IS KEPT OUT OF INSERT THREADS.
5. BUTTLINE POSITION IS SET BY BRACKET INSTALLATION .
6. USE OF EXISTING MANUFACTURER INSTALLED HARDWARE IS ACCEPTABLE.
7. NOMINAL DISTANCE BETWEEN ROD END BOLT HOLE CENTERS 10.5".
8. DRILL THRU FACESHEET ONLY TO A MAXIMUM DEPTH OF 0.25".
9. MARK AND DRILL BRACKET FROM EXISTING RIVETS. MAINTAIN A MINIMUM HOLE CENTER TO BRACKET EDGE DISTANCE OF 0.270". THE BRACE ASSEMBLY ROD ENDS CAN BE ADJUSTED TO ACHIEVE DESIRED EDGE DISTANCE. MINIMUM OF 0.5" THREAD ENGAGEMENT MUST BE MAINTAINED ON THE ROD ENDS.
10. POSITION PER B.H.T. SERVICE INST. #206-22 IF NOT PREVIOUSLY INSTALLED.



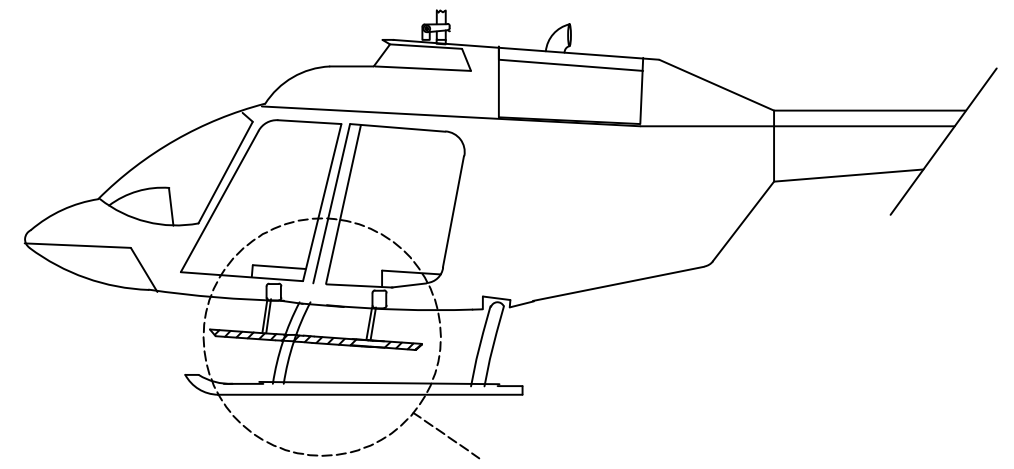
DETAIL A

-1 LEFT SIDE INSTALLATION (SHOWN)

 RIGHT SIDE INSTALLATION (OPPOSITE)



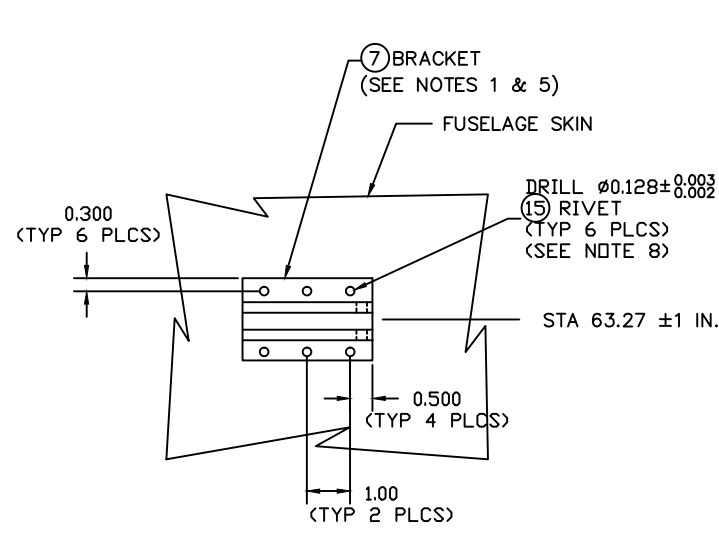
BELL INSTALLED STEP FITTING
(SEE NOTE 2)



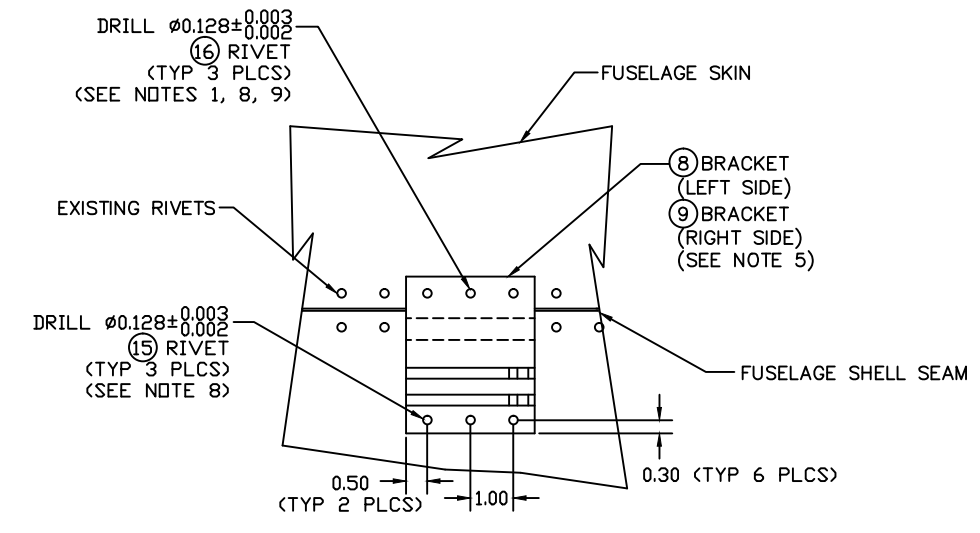
DETAIL A

PROTO
 N/C

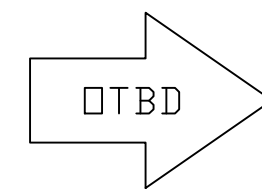
Paravion® Technology Inc.		TITLE CABIN STEP INSTALLATION		DRAWING NO. 206CS-100	
DIMENSIONS IN INCHES TOLERANCES EXCEPT WHERE NOTED:		DRAWN BY NLH	APRVD. BY BR	CHK'D BY BR	DATE 12/14/87 01/24/00
.X = ± .1	.XX = ± .05	DO NOT SCALE DRAWING		REV C	ECO 2
.XXX = ± .010	ANGLES = ± 1°	© 1999 PARAVION TECH., INC. PARAVION IS A TRADEMARK OF PARAVION TECHNOLOGY, INC.		SHEET 1 OF 4	



LEFT FRONT
VIEW J-J

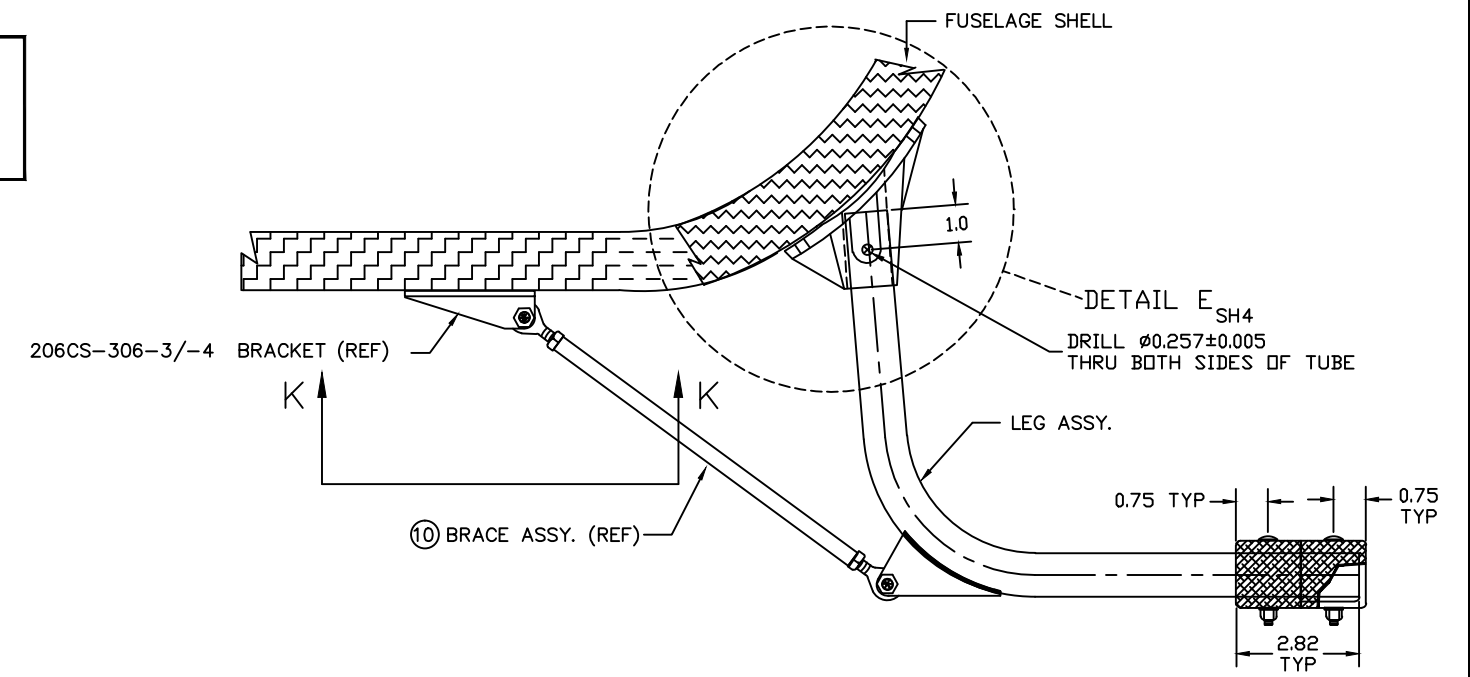


LEFT REAR
VIEW K-K

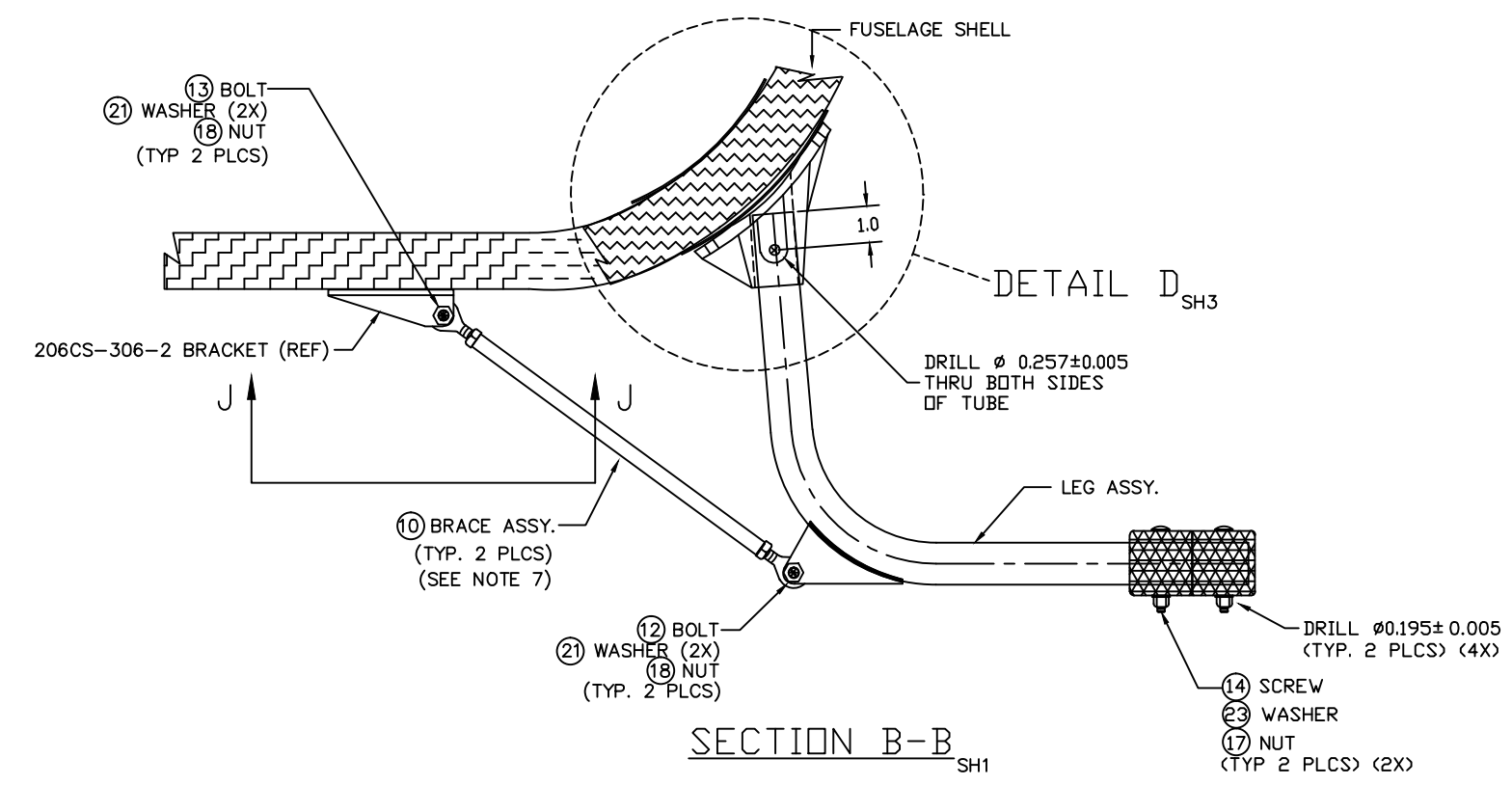


CAUTION
THE FUEL CELL IS LOCATED DIRECTLY ABOVE THIS LOCATION. USE DRILL STOP TO PREVENT DRILLING DEEPER THAN 0.25 INCH.

-1 LEFT SIDE INST. (SHOWN)
RIGHT SIDE INST (OPPOSITE)



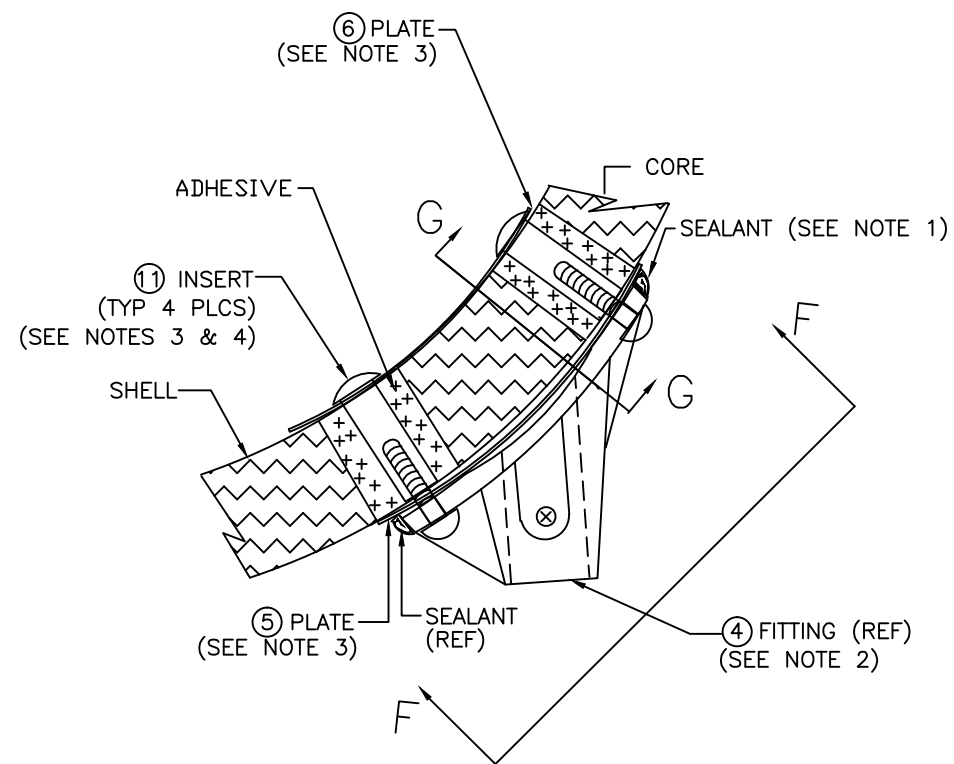
SECTION C-C
SH1



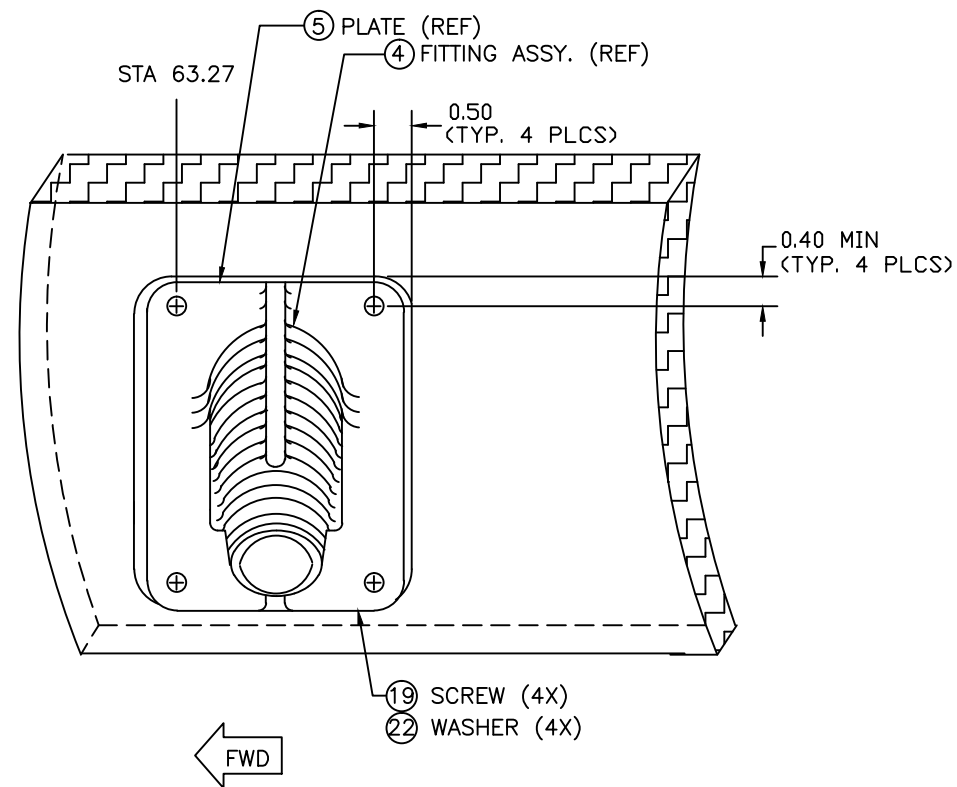
SECTION B-B
SH1

PROTO
N/C

Paravion® Technology Inc. DIMENSIONS IN INCHES TOLERANCES EXCEPT WHERE NOTED: .X = ± .1 .XX = ± .05 .XXX = ± .010 ANGLES = ± 1°	TITLE CABIN STEP INSTALLATION		DRAWING NO. 206CS-100		
	DRAWN BY NLH	APRVD. BY BR	CHK'D BY BR	DATE 03/24/88	REV C
	DO NOT SCALE DRAWING				SHEET 2 OF 4
© 2000 PARAVION TECH., INC. PARAVION IS A TRADEMARK OF PARAVION TECHNOLOGY, INC.					

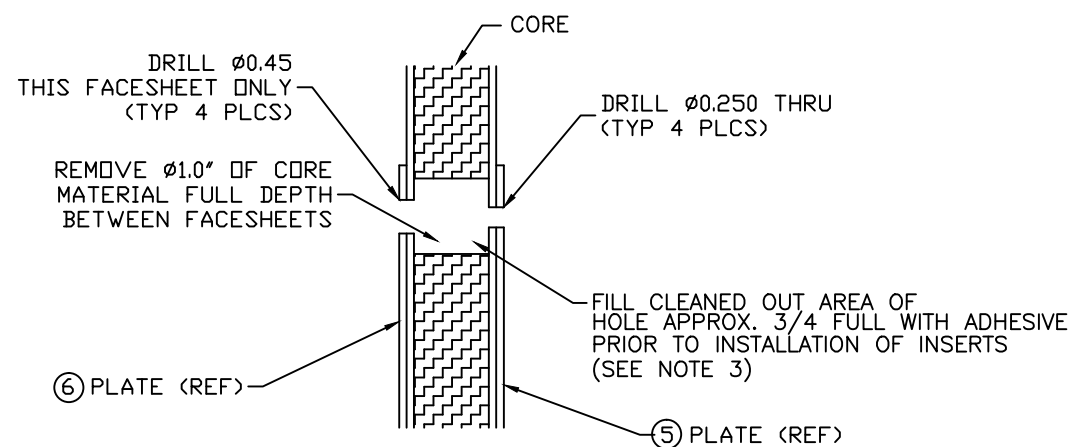


FORWARD FITTING INSTALLATION
DETAIL D
 SH2



FORWARD FITTING INSTALLATION
VIEW F-F

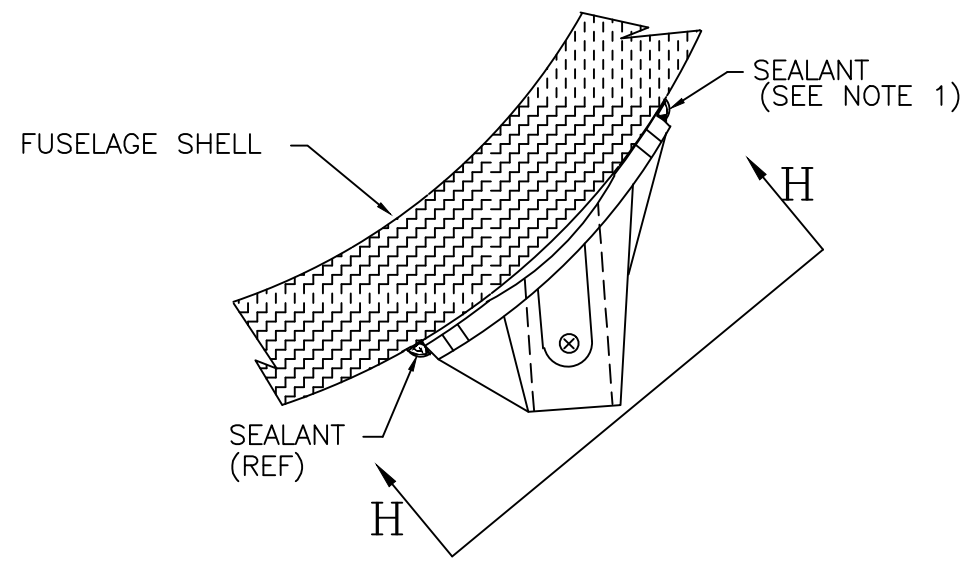
-1 LEFT SIDE INST. (SHOWN)
 RIGHT SIDE INST. (OPPOSITE)



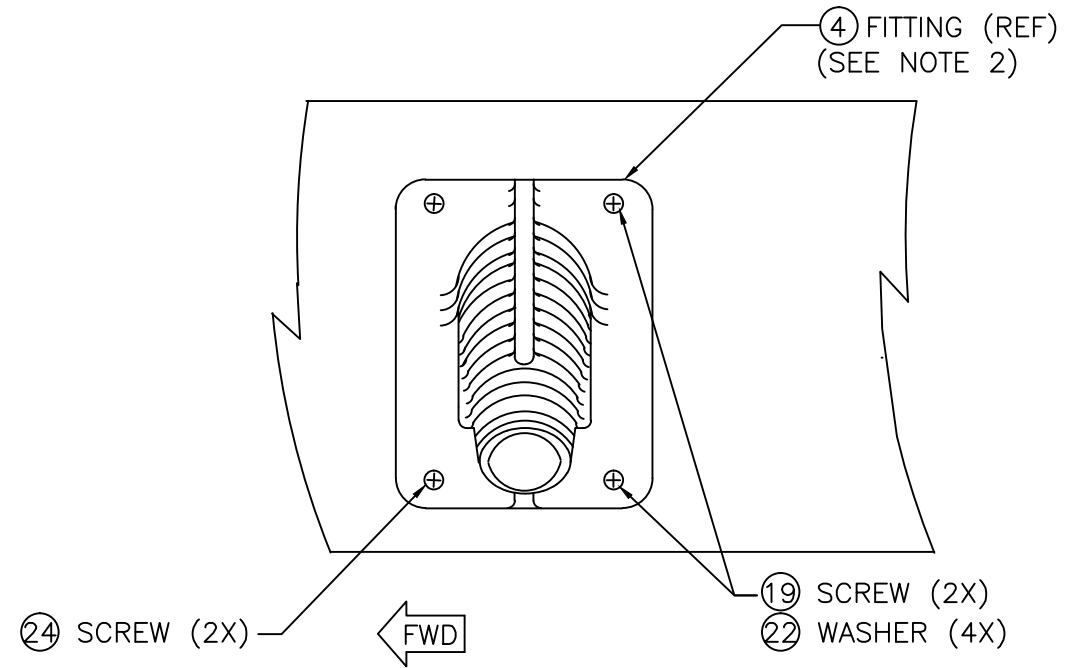
SECTION G-G
 SECTION SHOWN LESS HARDWARE AND ADHESIVE

PROTO
 N/C

Paravion® Inc. Technology		TITLE CABIN STEP INSTALLATION			DRAWING NO. 206CS-100		
		DIMENSIONS IN INCHES					
TOLERANCES EXCEPT WHERE NOTED:							
.X = ± .1 .XX = ± .05 .XXX = ± .010 ANGLES = ± 1°		DRAWN BY NLH	APRVD. BY BR	CHK'D BY BR	DATE 12/14/87 01/24/00	REV C	ECO 2
DO NOT SCALE DRAWING						SHEET 3 OF 4	
© 1999 PARAVION TECH., INC. PARAVION IS A TRADEMARK OF PARAVION TECHNOLOGY, INC.							



LEFT REAR
DETAIL E
SH2



LEFT REAR
VIEW H-H

-1 LEFT SIDE INST. (SHOWN)
RIGHT SIDE INST. (OPPOSITE)

PROTO
N/C

Paravion® Inc. Technology		TITLE			DRAWING NO.	
		CABIN STEP INSTALLATION			206CS-100	
DIMENSIONS IN INCHES						
TOLERANCES EXCEPT WHERE NOTED:						
DRAWN BY		APRVD. BY	CHK'D BY	DATE	REV	ECO
NLH		BR	BR	12/14/87	C	2
ECO				01/24/00		
DO NOT SCALE DRAWING					SHEET	
© 1999 PARAVION TECH., INC. PARAVION IS A TRADEMARK OF PARAVION TECHNOLOGY, INC.					4 OF 4	

Bill of Materials

*206CS-100-1, REV. C ECO2

ITEM #	P/N	DESCRIPTION	QTY	TYP
0	*206CS-100-1, REV. C ECO2	CABIN STEPS INST'N KIT	1	KIT
1	206CS-200-1	STEP ASSEMBLY	2	EA.
3	206CS-300-1	LEG ASSEMBLY	4	EA.
7	206CS-306-2	BRACKET	2	EA.
8	206CS-306-3	BRACKET	1	EA.
9	206CS-306-4	BRACKET	1	EA.
10	206CS-307-1	BRACE ASSEMBLY	4	EA.
12	AN4-7A	BOLT	4	EA.
13	AN4-12A	BOLT	4	EA.
14	AN525-10R30	SCREW	8	EA.
15	CR3243-4-4	RIVET	18	EA.
16	CR3243-5-6	RIVET	6	EA.
17	MS20364-1032	NUT	8	EA.
18	MS20364-428	NUT	8	EA.
21	NAS1149F0432P	WASHER	16	EA.
23	NAS1149F0332P	WASHER	8	EA.

Bill of Materials

*206CS-100-2, REV. C ECO2

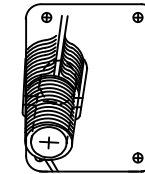
ITEM #	P/N	DESCRIPTION	QTY	TYP
0	*206CS-100-2, REV. C ECO2	CABIN STEPS INST'N KIT	1	KIT
2	206CS-200-2	STEP ASSEMBLY	2	EA.
3	206CS-300-1	LEG ASSEMBLY	4	EA.
7	206CS-306-2	BRACKET	2	EA.
8	206CS-306-3	BRACKET	1	EA.
9	206CS-306-4	BRACKET	1	EA.
10	206CS-307-1	BRACE ASSEMBLY	4	EA.
12	AN4-7A	BOLT	4	EA.
13	AN4-12A	BOLT	4	EA.
14	AN525-10R30	SCREW	8	EA.
15	CR3243-4-4	RIVET	18	EA.
16	CR3243-5-6	RIVET	6	EA.
17	MS20364-1032	NUT	8	EA.
18	MS20364-428	NUT	8	EA.
21	NAS1149F0432P	WASHER	16	EA.
23	NAS1149F0332P	WASHER	8	EA.

NOTES:

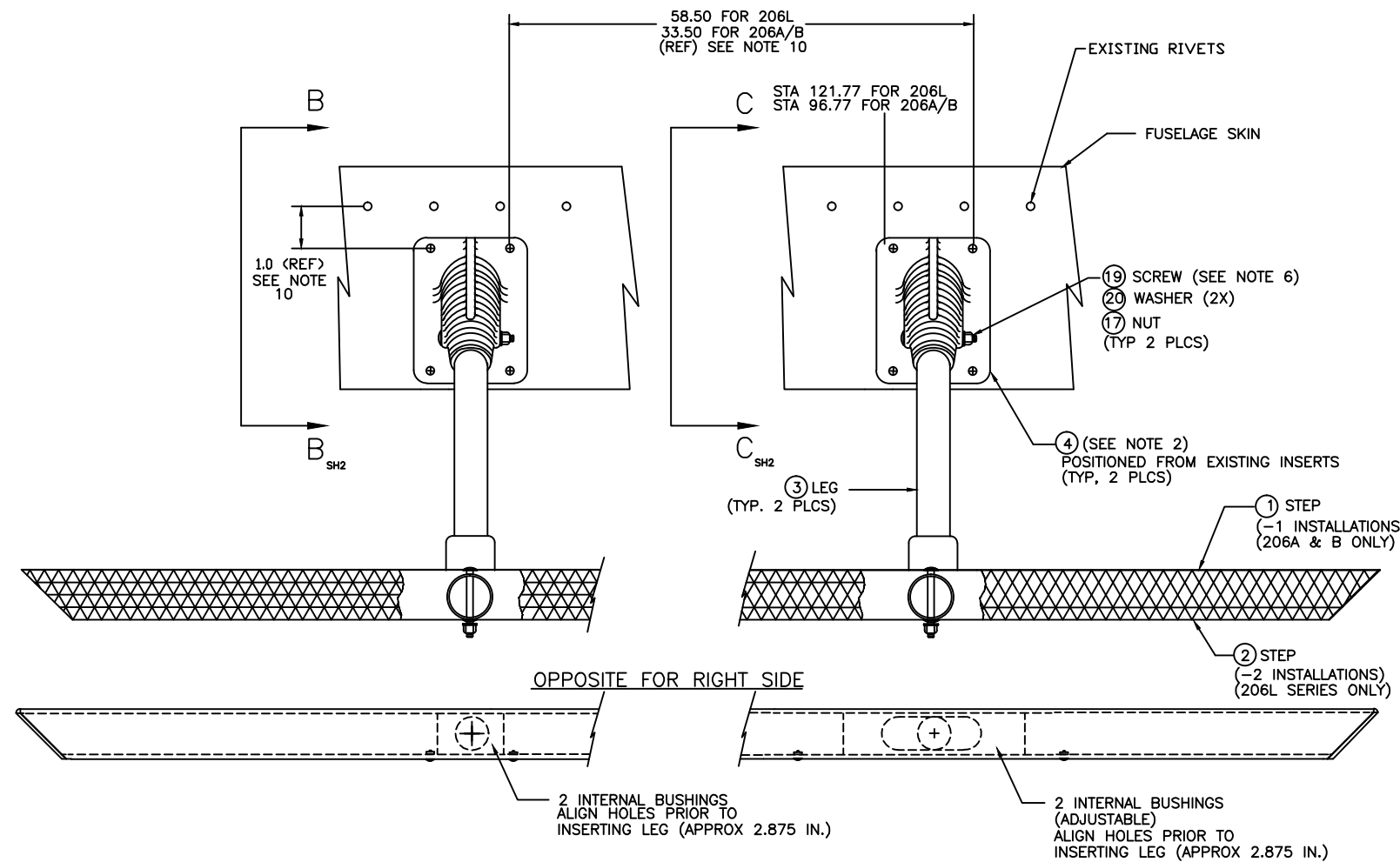
1. COAT FAYING SURFACES OR SEAL EDGES OF EACH 206CS-304-3 FITTING USING MIL-S-8802F CLASS B2 SEALANT OR EQUIVALENT.
2. SOME PARTS MAY NOT BE REQUIRED IF AIRCRAFT HAD PREVIOUSLY INSTALLED STEPS.
3. BOND USING EA934 OR METALSET A4.
4. ASSURE ADHESIVE IS KEPT OUT OF INSERT THREADS.
5. BUTTLINE POSITION IS SET BY BRACKET INSTALLATION .
6. USE OF EXISTING MANUFACTURER INSTALLED HARDWARE IS ACCEPTABLE.
7. NOMINAL DISTANCE BETWEEN ROD END BOLT HOLE CENTERS 10.5".
8. DRILL THRU FACESHEET ONLY TO A MAXIMUM DEPTH OF 0.25".
9. MARK AND DRILL BRACKET FROM EXISTING RIVETS. MAINTAIN A MINIMUM HOLE CENTER TO BRACKET EDGE DISTANCE OF 0.270". THE BRACE ASSEMBLY ROD ENDS CAN BE ADJUSTED TO ACHIEVE DESIRED EDGE DISTANCE. MINIMUM OF 0.5" THREAD ENGAGEMENT MUST BE MAINTAINED ON THE ROD ENDS.
10. POSITION PER B.H.T. SERVICE INST. #206-22 IF NOT PREVIOUSLY INSTALLED.

Δ 11 OBTAIN REPLACEMENT ES39000-832-15, ES39001-832 PARTS FROM PARAVION TECHNOLOGY, INC.

SHEET	REV	ECO	DATE	DESCRIPTION	APR	CHK
1 & 3	A		04/27/90	CHANGE -14 NYLON SHEER SCREW TO -15	BR	BR
1 & 4	B		12/05/90	CR3243-4-4 WAS 4-3, 5-6 WAS 5-5, & ADDED 4-5	BR	BR
1,3,4	C		07/08/92	REVISED DRAWING SHOWING 206CS-410-1 CAPS INSTALLED.	BR	BR
1-4		1	01/06/00	DWG REDRAWN, UPDATED BOM	MR	LS
1-4		2	01/23/00	ADDED ONE LONGER SCREW TO ASSY, BOM	MR	LS
1,2		3	04/30/08	ADD Δ 11, SHEAR SCREW INSTALLATION SPEC'N	REB	LS



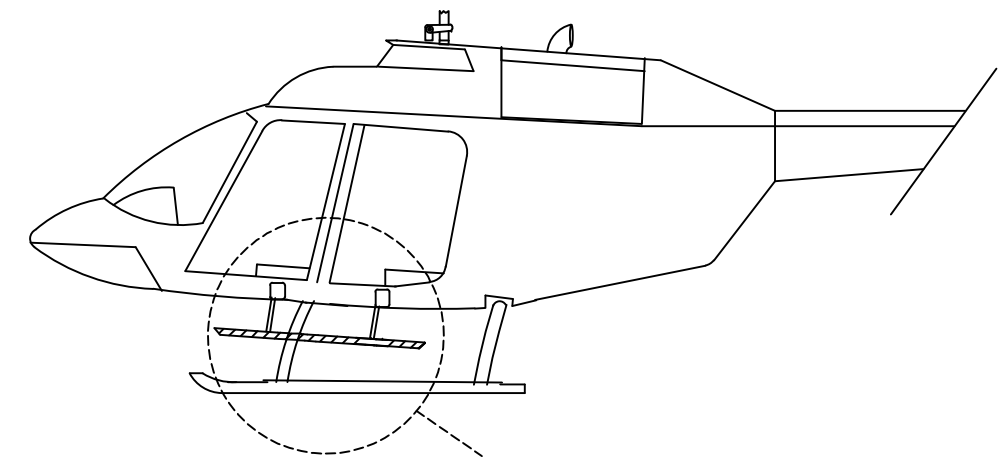
BELL INSTALLED STEP FITTING (SEE NOTE 2)



DETAIL A

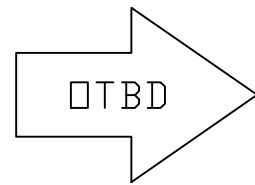
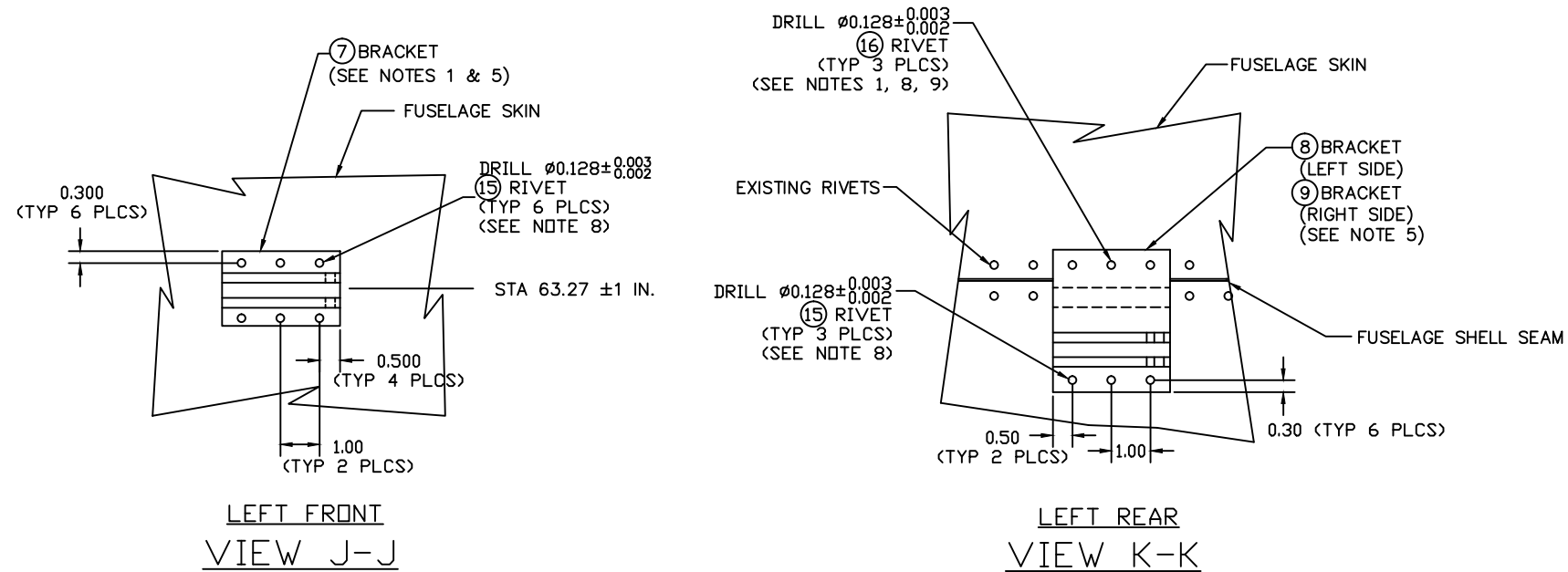
-1 LEFT SIDE INSTALLATION (SHOWN)

RIGHT SIDE INSTALLATION (OPPOSITE)

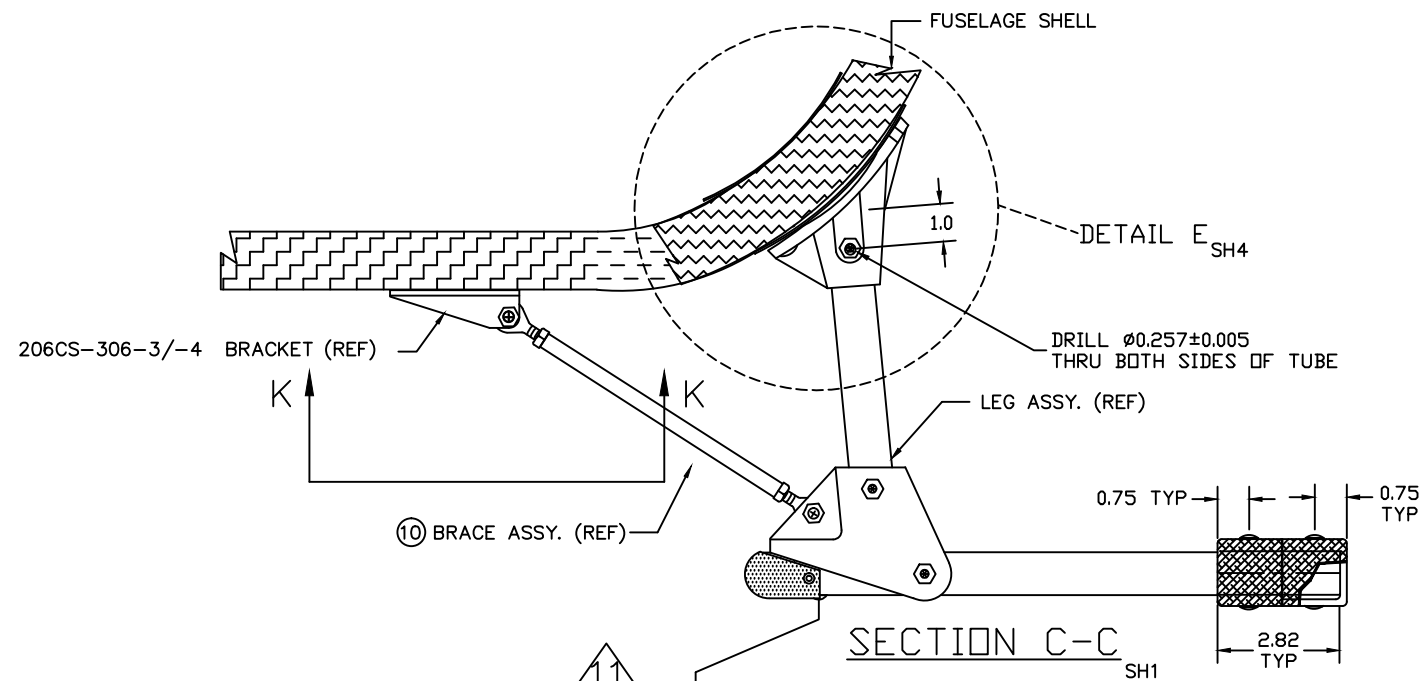
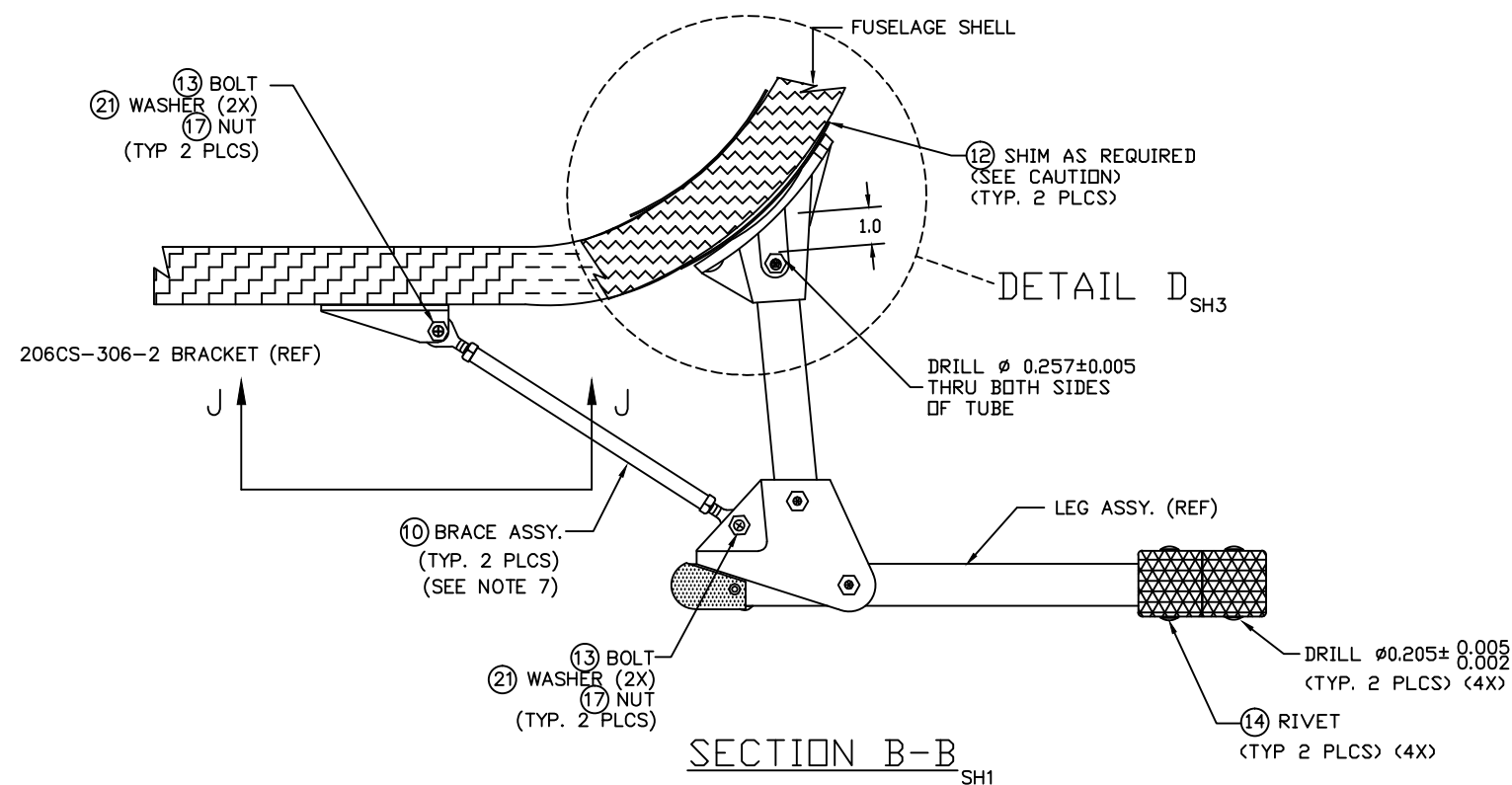


DETAIL A

Paravion [®] Technology Inc.		TITLE CABIN STEP INSTALLATION		DRAWING NO. 206CS-101	
DIMENSIONS IN INCHES TOLERANCES EXCEPT WHERE NOTED:		DRAWN BY NLH	APRVD. BY BR	CHK'D BY BR	DATE 04/26/89
.X = ± .1 .XX = ± .05 .XXX = ± .010 ANGLES = ± 1°		DO NOT SCALE DRAWING			REV C
PROTO		© 1999 PARAVION TECH., INC. PARAVION IS A TRADEMARK OF PARAVION TECHNOLOGY, INC.			ECO 3
N/C					SHEET 1 OF 4



-1 LEFT SIDE INST. (SHOWN)
RIGHT SIDE INST (OPPOSITE)

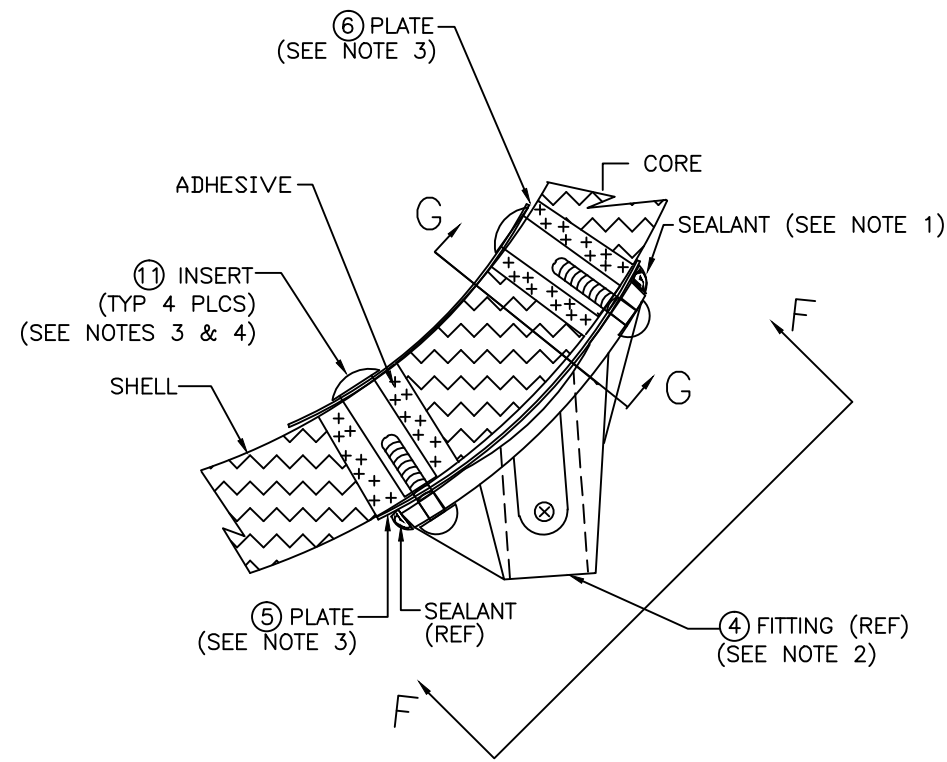


CAUTION
IF FITTINGS ARE NOT SHIMMED PROPERLY, NYLON SHEAR SCREWS MAY SHEER DURING INSTALLATION OR PREMATURELY UNDER NORMAL USE.

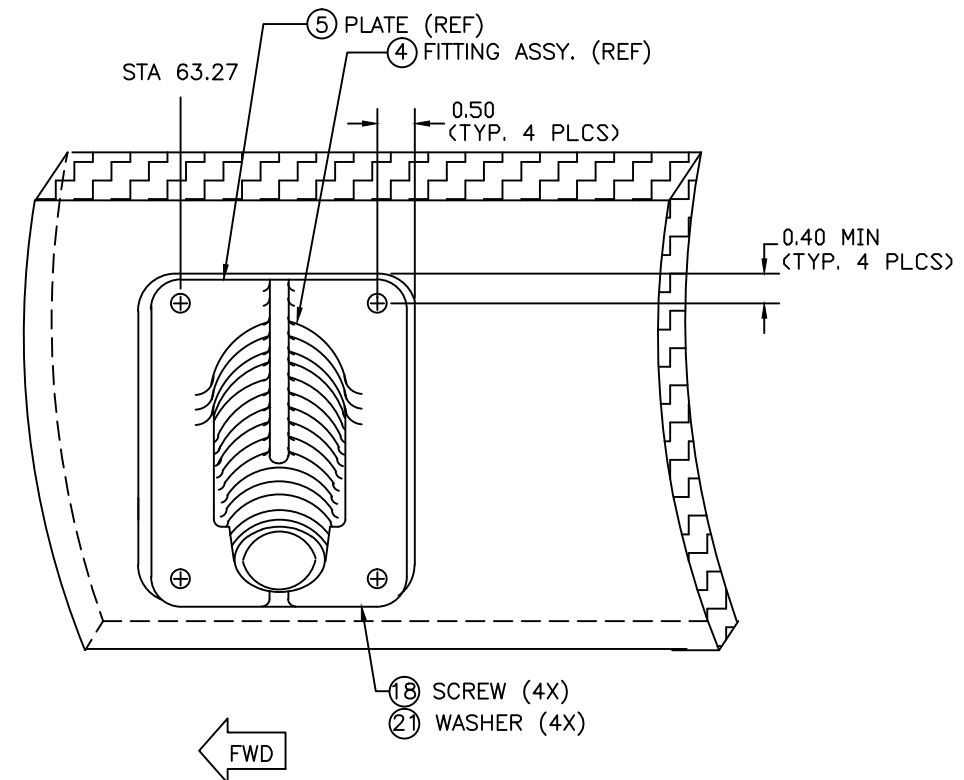
ES39000-832-15, ES39001-832 NYLON SHEAR SCREW, NUT
INSTALL REPLACEMENT SCREW FROM BOTTOM SIDE ONLY
APPLY LOC-TITE TO THREADS, TORQUE TO 3 INCH-POUNDS.

PROTO
N/C

Paravion® Inc. Technology		TITLE CABIN STEP INSTALLATION		DRAWING NO. 206CS-101	
DIMENSIONS IN INCHES TOLERANCES EXCEPT WHERE NOTED:					
DRWN BY	APRVD. BY	CHK'D BY	DATE	REV	ECO
NLH	BR	BR	04/26/89	C	3
DO NOT SCALE DRAWING					SHEET 2 OF 4
© 2000 PARAVION TECH., INC. PARAVION IS A TRADEMARK OF PARAVION TECHNOLOGY, INC.					

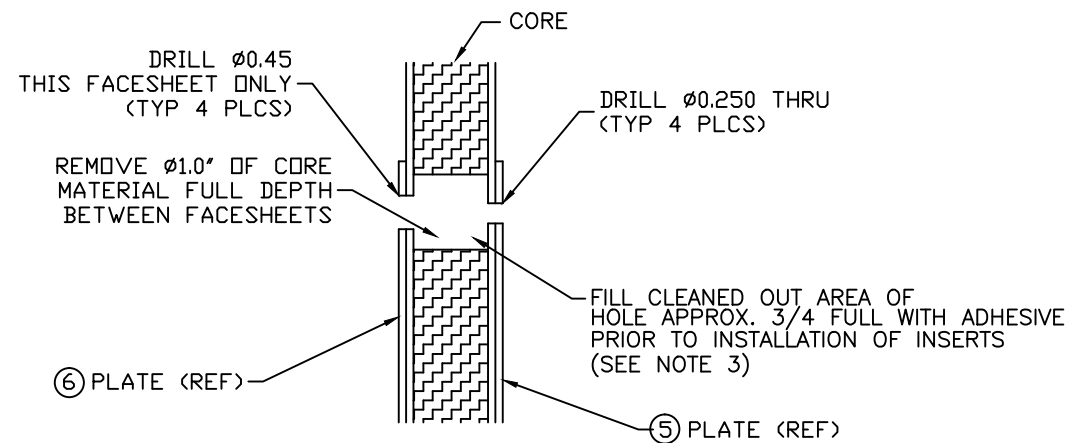


FORWARD FITTING INSTALLATION
DETAIL D
 SH2



FORWARD FITTING INSTALLATION
VIEW F-F

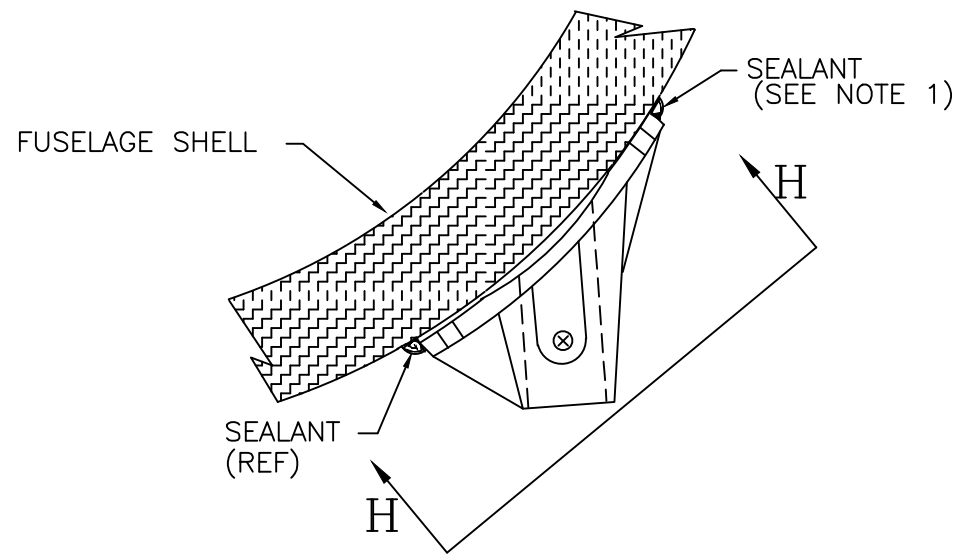
-1 LEFT SIDE INST. (SHOWN)
 RIGHT SIDE INST. (OPPOSITE)



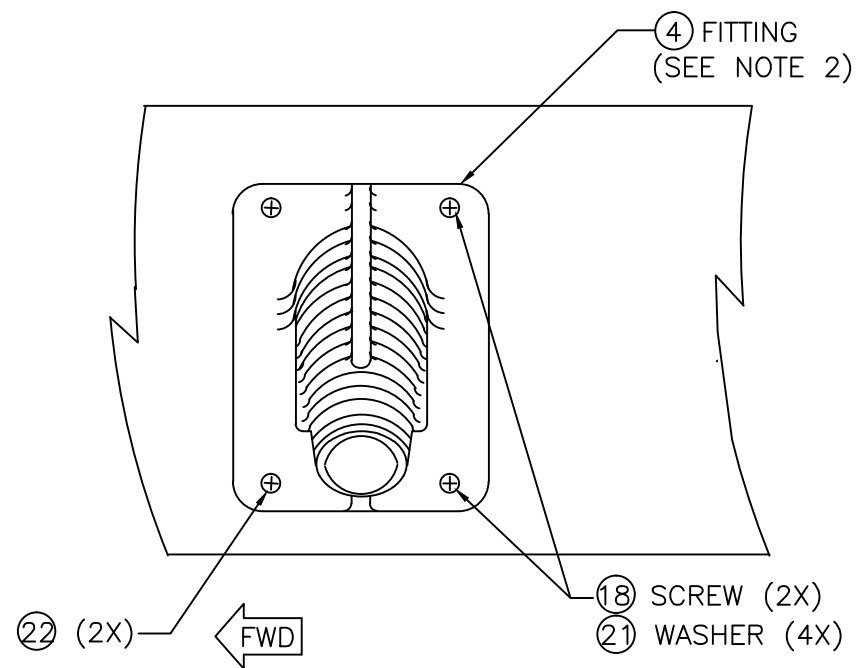
SECTION G-G
 SECTION SHOWN LESS HARDWARE AND ADHESIVE

PROTO
 N/C

Paravion® Inc. Technology		TITLE CABIN STEP INSTALLATION			DRAWING NO. 206CS-101	
DIMENSIONS IN INCHES						
TOLERANCES EXCEPT WHERE NOTED:						
.X = ± .1		.XX = ± .05		.XXX = ± .010		ANGLES = ± 1°
DRAWN BY NLH	APRVD. BY BR	CHK'D BY BR	DATE 04/26/89	REV C	ECO 2	
DO NOT SCALE DRAWING				SHEET 3 OF 4		
© 1999 PARAVION TECH., INC. PARAVION IS A TRADEMARK OF PARAVION TECHNOLOGY, INC.						



LEFT REAR
DETAIL E
SH2



LEFT REAR
VIEW H-H

-1 LEFT SIDE INST. (SHOWN)
RIGHT SIDE INST. (OPPOSITE)

PROTO
N/C

Paravion® Inc. Technology		TITLE CABIN STEP INSTALLATION			DRAWING NO. 206CS-101	
DIMENSIONS IN INCHES						
TOLERANCES EXCEPT WHERE NOTED:						
.X = ± .1		DRAWN BY NLH		APRVD. BY BR		CHK'D BY BR
.XX = ± .05		ECO		DATE 04/26/89		REV C
.XXX = ± .010				01/24/00		ECO 2
ANGLES = ± 1°						DO NOT SCALE DRAWING
© 1999 PARAVION TECH., INC. PARAVION IS A TRADEMARK OF PARAVION TECHNOLOGY, INC.						SHEET 4 OF 4

Bill of Materials

*206CS-101-1, REV. C ECO3

ITEM #	P/N	DESCRIPTION	QTY	TYP
0	*206CS-101-1, REV. C ECO3	CABIN STEPS INST'N KIT	1	KIT
1	206CS-200-1	STEP ASSEMBLY	2	EA.
3	206CS-400-1	LEG ASSEMBLY	4	EA.
7	206CS-306-2	BRACKET	2	EA.
8	206CS-306-3	BRACKET	1	EA.
9	206CS-306-4	BRACKET	1	EA.
10	206CS-307-2	BRACE ASSEMBLY	4	EA.
12	206CS-309-1	SHIM	6	EA.
13	AN4-12A	BOLT	8	EA.
14	CR3243-6-4	RIVET	16	EA.
15	CR3243-4-4	RIVET	18	EA.
16	CR3243-5-6	RIVET	6	EA.
17	MS20364-428	NUT	8	EA.
20	NAS1149F0432P	WASHER	16	EA.

Bill of Materials

*206CS-101-2, REV. C ECO3

ITEM #	P/N	DESCRIPTION	QTY	TYP
0	*206CS-101-2, REV. C ECO3	CABIN STEPS INST'N KIT	1	KIT
2	206CS-200-2	STEP ASSEMBLY	2	EA.
3	206CS-400-1	LEG ASSEMBLY	4	EA.
7	206CS-306-2	BRACKET	2	EA.
8	206CS-306-3	BRACKET	1	EA.
9	206CS-306-4	BRACKET	1	EA.
10	206CS-307-2	BRACE ASSEMBLY	4	EA.
12	206CS-309-1	SHIM	6	EA.
13	AN4-12A	BOLT	8	EA.
14	CR3243-6-4	RIVET	16	EA.
15	CR3243-4-4	RIVET	18	EA.
16	CR3243-5-6	RIVET	6	EA.
17	MS20364-428	NUT	8	EA.
20	NAS1149F0432P	WASHER	16	EA.